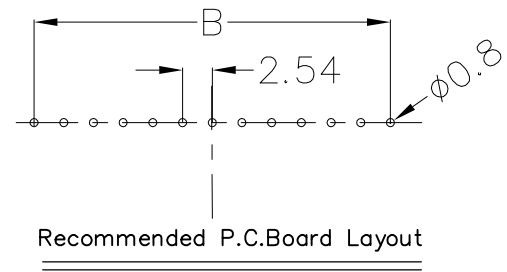
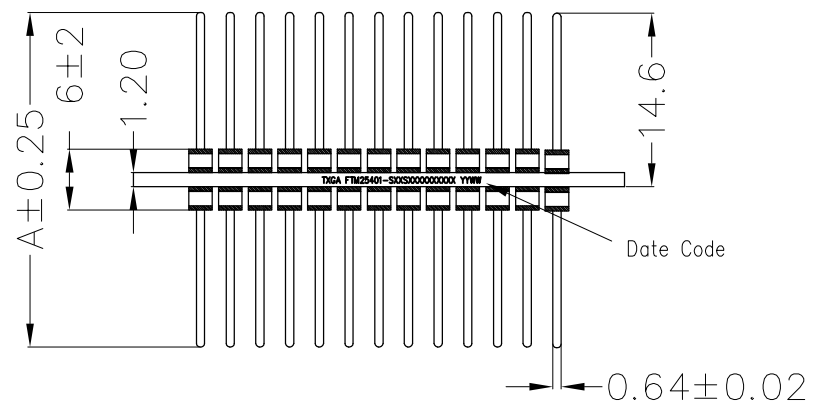
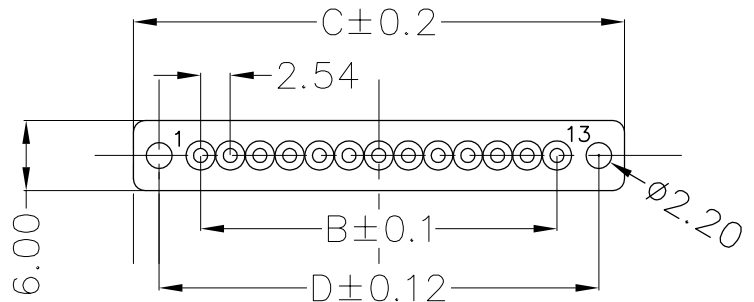


1 2 3 4 5 6 7 8

REV	LOCATIONS	DESCRIPTION	DATE	REVISER	APPD



Ordering Information

FTM 254 02 - S XX S X XX X XX XX
 1 2 3 4 5 6 7 8 9 10 11

1	Category FTM-EMI Filter Plate	2	Pitch 254-2.54mm	3	Serial code 02	4	Row Option S-Single row	5	Circuits 04-4Circuits 13-13Circuits	6	Orientation S-Vertical(180°)
7	Plating 1-Gold plated 4-Silver plated	8	Plating Thickness 01- 0.025um 21- 0.3um 12- 3um	9	Filter Circuits A-C B-PI C-L	10	Capacitance Value A1-100pF A2-135pF A6-1000pF	11	Pin Size A0-28.0		

- Notes:
- Materials and Plating
 Contacts: Copper Alloy, Gold/Silver Plated
 Ground Plate: Silver Plated, Copper Alloy
 - Working Temperature: -55°C to 85°C
 - Insulation Resistance: 1000MΩ Min
 - Contact Resistance: 20mΩ Max
 - Rated Current: 1A
 - Rated Voltage: 100V DC
 - Capacitance: See Table 1

 THIRD ANGLE PROJECTION	GENERAL TOLERANCES (UNLESS SPECIFIED)		APPROVE BY LEO	DATE 30/JAN/23	PART NO. FTM25402-SXXSXXXXXXXX	ITEM NO. FTM25402	 Building Technology Cornerstone		
	DESIGN UNITS mm	X. ±0.30	X.' ±5'	CHECKED BY GISELLE	DATE 30/JAN/23	TITLE EMI Filter Plate		REV 0	SHEET NO. 1/3
	SCALE 5:1	SIZE A4	X.XX ±0.15	X.XX' ±1'	DRAWN BY CHERRY	DATE 30/JAN/23		THIS DRAWING CONTAINS INFORMATION THAT IS PROPRIETARY TO TXGA INDUSTRIAL ELECTRONICS(S.Z)CO.,LTD AND SHOULD NOT BE USED WITHOUT WRITTEN PERMISSION	

1 2 3 4 5 6 7 8

1 2 3 4 5 6 7 8

REV	LOCATIONS	DESCRIPTION	DATE	REVISER	APPD

A

A

B

B

C

C

D

D

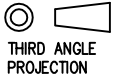

E

E

F

F

Plate Length(A)	Part No.	Circuits (n)	Dimensions(mm)		
			B	C	D
28	FTM25402-S02SXXXXXXXX	2	2.54	14.06	9.66
	FTM25402-S03SXXXXXXXX	3	5.08	16.60	12.20
	FTM25402-S04SXXXXXXXX	4	7.62	19.14	14.74
	FTM25402-S05SXXXXXXXX	5	10.16	21.68	17.28
	FTM25402-S06SXXXXXXXX	6	12.70	24.22	19.82
	FTM25402-S07SXXXXXXXX	7	15.24	26.76	22.36
	FTM25402-S08SXXXXXXXX	8	17.78	29.30	24.90
	FTM25402-S09SXXXXXXXX	9	20.32	31.84	27.44
	FTM25402-S10SXXXXXXXX	10	22.86	34.38	29.98
	FTM25402-S11SXXXXXXXX	11	25.40	36.92	32.52
	FTM25402-S12SXXXXXXXX	12	27.94	39.46	35.06
	FTM25402-S13SXXXXXXXX	13	30.48	42.0	37.60

 THIRD ANGLE PROJECTION	GENERAL TOLERANCES (UNLESS SPECIFIED)		APPROVE BY	DATE	PART NO.	ITEM NO.	 Building Technology Cornerstone	
	X. ±0.30	X.' ±5'	LEO	30/JAN/23	FTM25402-SXXSXXXXXXXX	FTM25402		
	X.X ±0.20	X.X' ±2'	CHECKED BY	DATE	TITLE			
DESIGN UNITS mm	X.XX ±0.15	X.XX' ±1'	GISELLE	30/JAN/23	EMI Filter Plate		REV 0	SHEET NO. 2/3
SCALE 5:1	X.XXX ±0.10	X.XXX' ±0.5'	DRAWN BY	DATE	THIS DRAWING CONTAINS INFORMATION THAT IS PROPRIETARY TO TXGA INDUSTRIAL ELECTRONICS(S.Z)CO.,LTD AND SHOULD NOT BE USED WITHOUT WRITTEN PERMISSION			
SIZE A4	CHERRY		30/JAN/23					

1 2 3 4 5 6 7 8

1

2

3

4

5

6

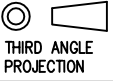

7

8

REV	LOCATIONS	DESCRIPTION	DATE	REVISER	APPD

See Table 1

Capacitance		3db Max Cutoff Frequency(MHz)	Rated Voltage DC	MINIMUM INSERTION LOSS(db)		
Value	Tolerance			10MHz	100MHz	1GHz
100pF	±20%	52	100V	—	3	20
135pF	±20%	24		—	5	24
220pF	±20%	14		—	10	29
470pF	±20%	11		1	15	34
830pF	±20%	7		2	19	38
1000pF	±20%	5		3	22	40
2000pF	±20%	2		7	26	45
4000pF	+50%/−20%	1		12	30	50

 THIRD ANGLE PROJECTION	GENERAL TOLERANCES (UNLESS SPECIFIED)		APPROVE BY LEO	DATE 20/Mar/24	PART NO. FTM25402-SXXSXXXXXXXXXX	ITEM NO. FTM25402	 Building Technology Cornerstone
	DESIGN UNITS mm	X. ±0.30	X.' ±5'	CHECKED BY GISELLE	DATE 20/Mar/24	TITLE EMI Filter Plate	
SCALE 5:1	SIZE A4	X.XX ±0.15	X.XX' ±1'	DRAWN BY CHERRY	DATE 20/Mar/24	THIS DRAWING CONTAINS INFORMATION THAT IS PROPRIETARY TO TXGA INDUSTRIAL ELECTRONICS(S.Z)CO.,LTD AND SHOULD NOT BE USED WITHOUT WRITTEN PERMISSION	
		X.XXX ±0.10	X.XXX' ±0.5'			REV 0	SHEET NO. 3/3

1

2

3

4

5

6

7

8