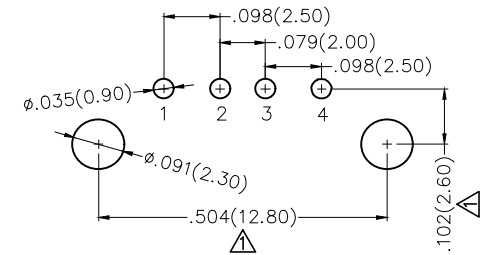
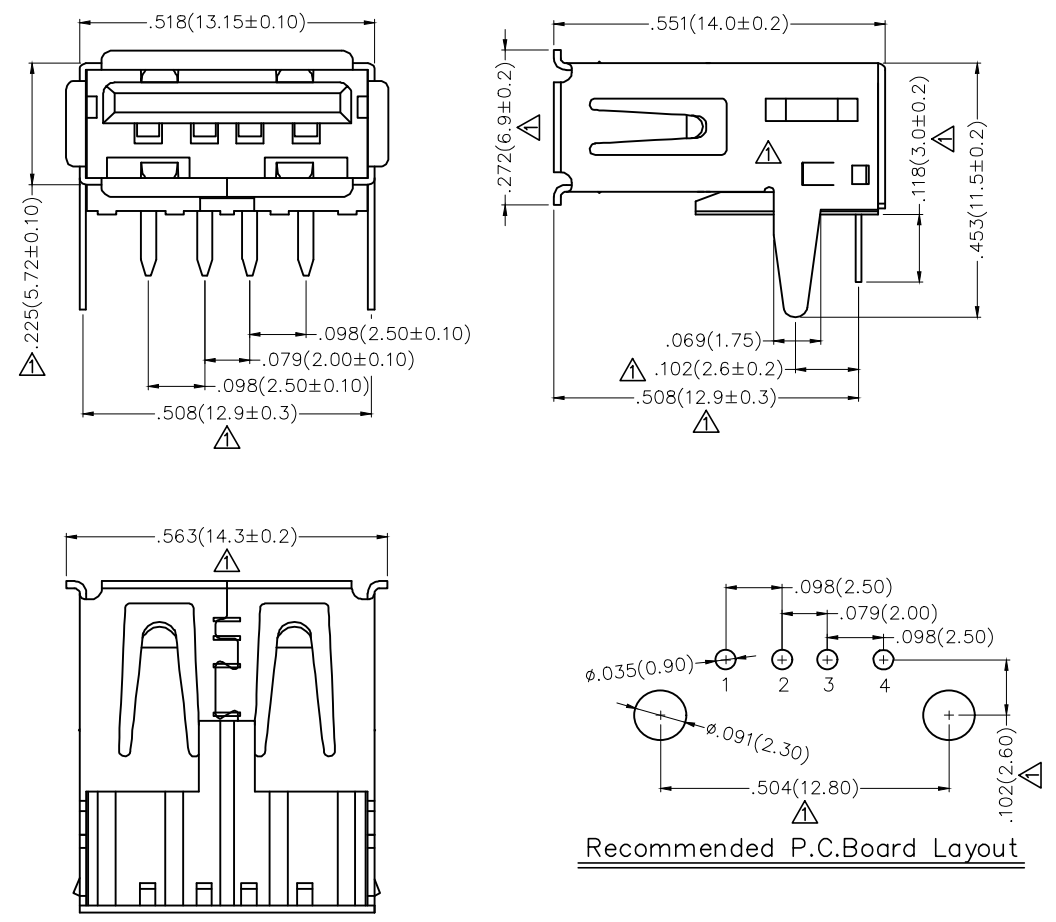


REV	LOCATIONS	DESCRIPTION	DATE	REVISER	APPD
1	△	1.Size and structure changes 2.Add Pin assignment	14/JAN/21	KATE	CHERRY

SPECIFICATIONS

**Electrical**  
 Current Rating: 1.5A AC(rms)/DC  
 Voltage Rating: 30V AC(rms)/DC  
 Contact Resistance(Initial): 30 mΩ Max  
 Withstanding Voltage: 500V AC r.m.s  
 Insulation Resistance: 1000 MΩ MIN  
 Temperature Range-Operating: -40°C~+85°C

**Material and Plating**  
 Housing: PBT (UL 94V-0)  
 Contact: Copper alloy/ Gold on contact area, Tin on tail.  
 Shell: Copper alloy/ Nickel Plated



Recommended P.C.Board Layout

Ordering Informaion

FUS 2 30 - F D B XX K  
 1 2 3 4 5 6 7 8

1	Category	2	Series Number	3	Distinction No.	4	Type
	FUS-USB		2-USB 2.0		30		F-Female
5	Assembly Layout	6	Entry Angle	7	Color-Resin	8	Packaging
	D-DIP		B-90° Angle		K6-Black W1-White		K-Tray

△ Pin assignment

Circuits	Signal name
1	VBUS
2	D-
3	D+
4	GND

 THIRD ANGLE PROJECTION	GENERAL TOLERANCES (UNLESS SPECIFIED)		APPROVE BY FRANK	DATE 25/MAY/13	PART NO. FUS230-FDBXXK	ITEM NO. FUS230	 Leader Of Industry
	DESIGN UNITS Inch (metric)	X.±.012(0.30)	X.'±5'	CHECKED BY CHERRY	DATE 25/MAY/13	TITLE USB A-type 4Circuits 90°Angle Female	
SCALE 5:1	SIZE A4	X.XX±.008(0.20)	X.'±2'	DRAWN BY KEVIN	DATE 25/MAY/13	THIS DRAWING CONTAINS INFORMATION THAT IS PROPRIETARY TO TXGA INDUSTRIAL ELECTRONICS(S.Z)CO.,LTD AND SHOULD NOT BE USED WITHOUT WRITTEN PERMISSION	
		X.XX±.006(0.15)	.XX'±1'			REV 1	SHEET NO. 1/1
		X.XXX±.004(0.10)	.XXX'±0.5'				