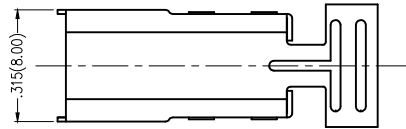


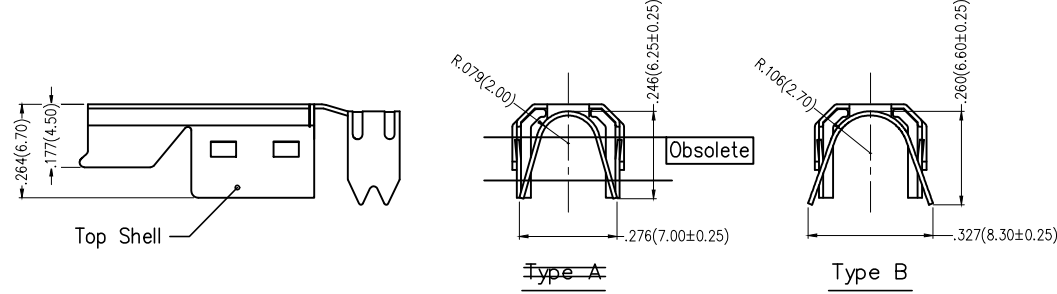
1 2 3 4 5 6 7 8

REV	LOCATIONS	DESCRIPTION	DATE	REVISER	APPD

A



B



Top Shell

Type A

Type B

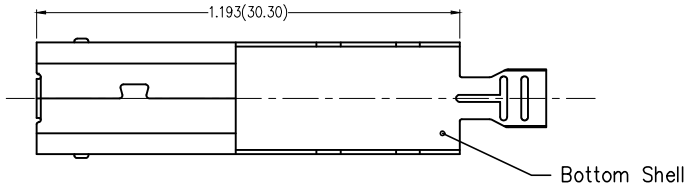
Obsolete

SPECIFICATIONS

Electrical
 Current Rating: 1.5A AC(rms)/DC
 Voltage Rating: 30V AC(rms)/DC
 Contact Resistance: 30 mΩ Max
 Withstanding Voltage: 500V AC r.m.s
 Insulation Resistance: 1000 MΩ Min
 Temperature Range—Operating: -25°C~+85°C
 Insertion Force: 3.57kgf Max
 Withdrawal Force: 1.02kgf Min

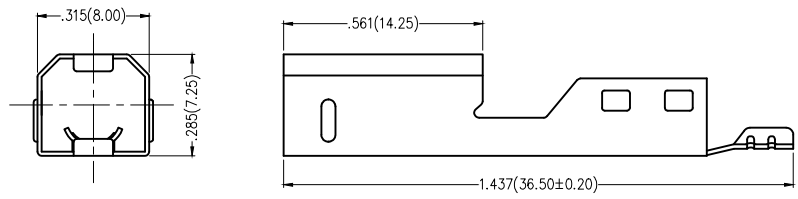
Material
 Housing: PBT+25%G.F, UL94V-0
 Contact: Brass/ Half Gold And Tin Plated
 Shell: SPCC/ Nickel Plated

C



Bottom Shell

D



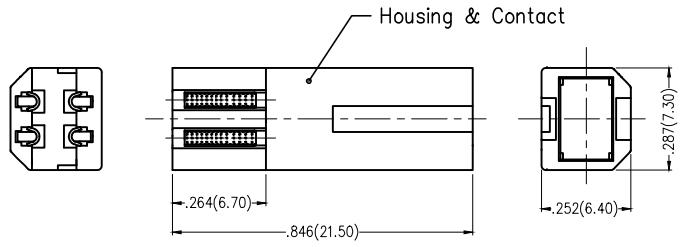
Ordering Informaion

FUS 2 48 — M W S XX XX B X
 1 2 3 4 5 6 7 8 9 10

E

1	Category FUS—USB	2	Series Number 2—USB 2.0	3	Distinction No. 48	4	Type M—Male	5	Assembly Layout W—Welding Type	6	Entry Angle S—Vertical
7	Color—Resin K6—Black W1—White	8	Thickness of Gold Plating 01—1u" 03—3u"	9	Packaging B—PE Bag	10	Product Categories A—Type A B—Type B				

F



 THIRD ANGLE PROJECTION	GENERAL TOLERANCES (UNLESS SPECIFIED)		APPROVE BY	DATE	PART NO.		 Leader Of Industry
	X.±.012(0.30)	X.±5'	FRANK	18/JUN/13	FUS248—MWSXXXXBX		
DESIGN UNITS	X.X±.008(0.20)	.X'±2"	CHECKED BY	DATE	TITLE		REV 0
Inch (metric)	X.XX±.006(0.15)	.XX'±1"	CHERRY	18/JUN/13	USB2.0 B/M WELDING TYPE CONN.		SHEET NO. 1/1
SCALE	X.XXX±.004(0.10)	.XXX'±0.5'	DRAWN BY	DATE	THIS DRAWING CONTAINS INFORMATION THAT IS PROPRIETARY TO TXGA INDUSTRIAL ELECTRONICS(S.Z)CO.,LTD AND SHOULD NOT BE USED WITHOUT WRITTEN PERMISSION		
5:1			KATE	18/JUN/13			

1 2 3 4 5 6 7 8