

REV	LOCATIONS	DESCRIPTION	DATE	REVISER	APPD
1	△	Structure&Size changes	17/NOV/23	MATT	LEO

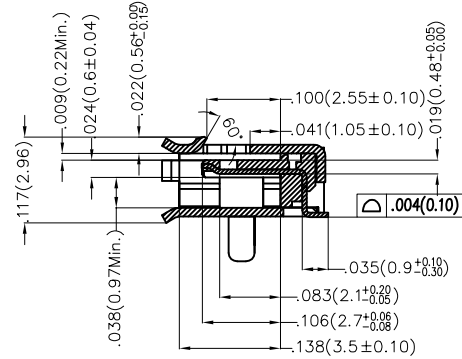
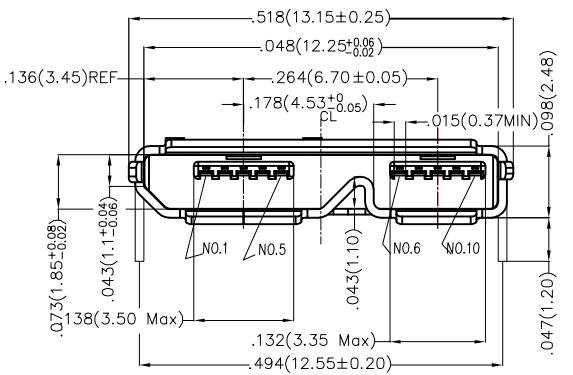
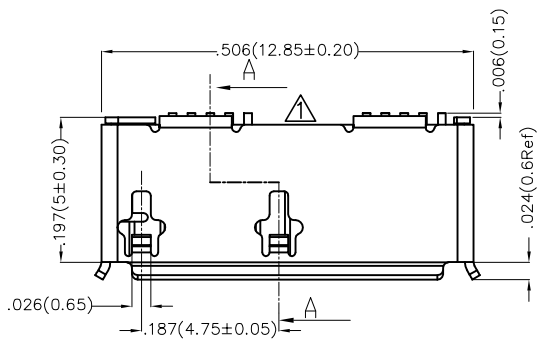
Pinassignment:

Circuits	Signal name
1	VBUS
2	D-
3	D+
4	ID
5	GND
6	MicB_SSTX-
7	MicB_SSTX+
8	GND_DRAIN
9	MicB_SSRX-
10	MicB_SSRX+

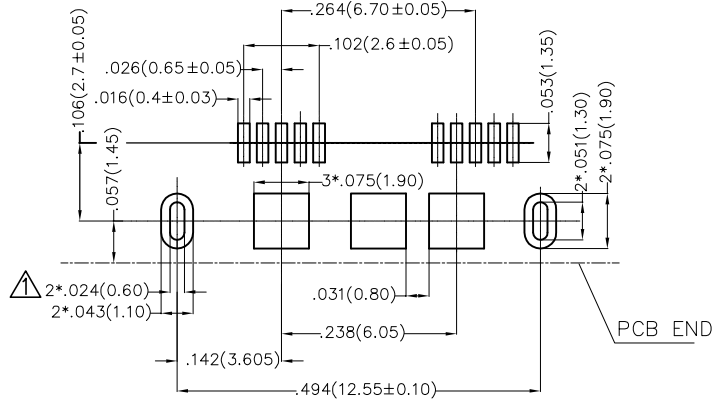
**Electrical**  
 Current Rating: 1A AC(rms)/DC  
 Voltage Rating: 30V AC(rms)/DC  
 Contact Resistance: 20 mΩ Max  
 Insulation Resistance: 1000 MΩ MIN  
 Withstanding Voltage: 600V AC r.m.s  
 Temperature Range-Operating: -40°C~+85°C

**Mechanical**  
 Insertion force: 3.57kgf Max.  
 Withdrawal force: 1.02kgf Min.  
 Durability: 100,00 Cycles Min.

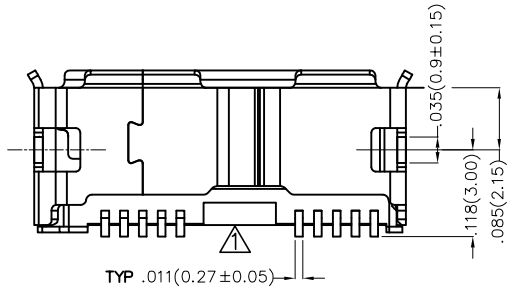
**Material and Plating**  
 Housing: LCP( UL 94V-0)  
 Contact Pin: Phosphor Bronze  
 Plating: Gold in contact area, Tin on tail.  
 Shell: Stainless steel/Nickel Plated



Section A-A



Recommended P.C.Board Layout  
 (General Tolerance : ±.002(0.05))



<p>THIRD ANGLE PROJECTION</p>	GENERAL TOLERANCES (UNLESS SPECIFIED)		APPROVE BY	DATE	PART NO.	ITEM NO.	<p>Building Technology Cornerstone</p>
	X.±.012(0.30)	X'.±5'	FRANK	21/JUN/13	FUS310-FSBK6M	FUS310	
	X.XX±.008(0.20)	.X'±2'	CHECKED BY	DATE	TITLE		
	X.XX±.006(0.15)	.XX'±1'	CHEERY	21/JUN/13	Micro USB 10Circuits 90°Angle Female(SMT)(3.0)		
SCALE	SIZE	X.XXX±.004(0.10)	.XXX'±0.5'	DRAWN BY	DATE	THIS DRAWING CONTAINS INFORMATION THAT IS PROPRIETARY TO TXGA INDUSTRIAL ELECTRONICS(S.Z)CO.,LTD AND SHOULD NOT BE USED WITHOUT WRITTEN PERMISSION	
5:1	A4			JACOB	21/JUN/13	REV 1	SHEET NO. 1/1