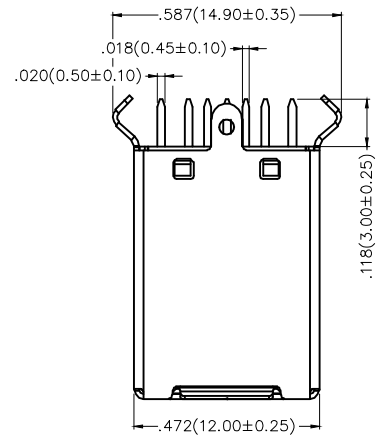


REV	LOCATIONS	DESCRIPTION	DATE	REVISED	APPD
1		Update version	10/MAY/18	KATE	VERNON



SPECIFICATIONS

Electrical

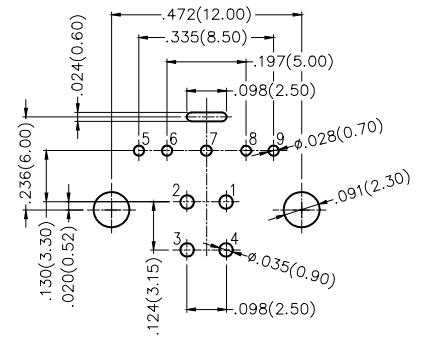
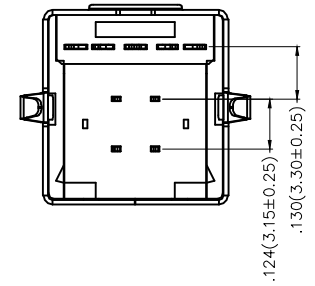
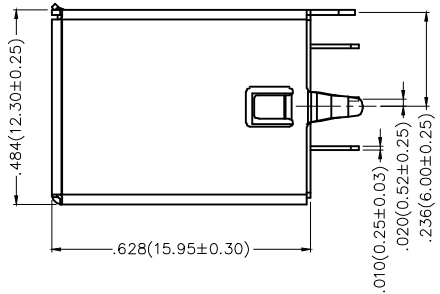
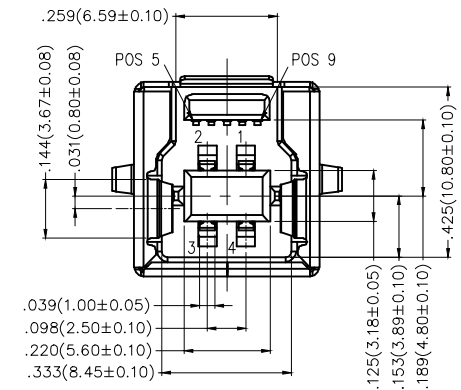
Current Rating: 1.5A AC(rms)/DC
Voltage Rating: 30V AC(rms)/DC
Contact Resistance: 50 mΩ Max
Insulation Resistance: 100 MΩ MIN
Withstanding Voltage: 100V AC r.m.s
Temperature Range—Operating: -40°C~+85°C

Material and Plating

Housing: PBT(UL 94V-0) , Color: Blue
Contact: Copper alloy
Contact Plating: Gold in contact area, Tin on tail
Shell: Copper alloy /Nickel plated

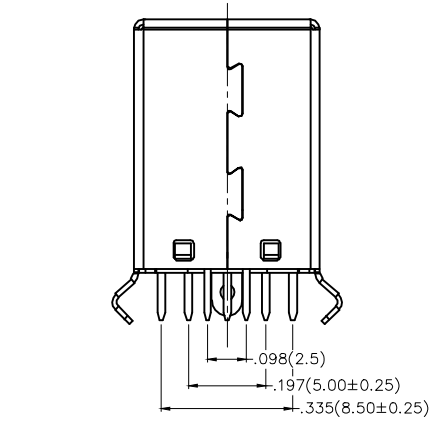
A
B
C
D
E
F

A
B
C
D
E
F



Recommended P.C.Board Layout

Circuits	Signal name	Circuits	Signal name
1	VBUS	5	StdB_SSTX-
2	D-	6	StdB_SSTX+
3	D+	7	GND_DRAIN
4	GND	8	StdB_SSRX-
Shell	Shield	9	StdB_SSRX+



 THIRD ANGLE PROJECTION	GENERAL TOLERANCES (UNLESS SPECIFIED)		APPROVE BY FRANK	DATE 18JUL/13	PART NO. FUS321-FDSU1K	ITEM NO. FUS321	 Leader Of Industry	
	X.±.012(0.30)	X.±5'	CHECKED BY KEVIN	DATE 18/JUL/13	TITLE USB B-type 9Circuits 180°Vertical Female(DIP)(3.0)			REV 1
	DESIGN UNITS Inch (metric)	X.X±.008(0.20)	.X'±2'	DRAWN BY CHERRY	DATE 18/JUL/13	THIS DRAWING CONTAINS INFORMATION THAT IS PROPRIETARY TO TXGA INDUSTRIAL ELECTRONICS(S.Z)CO.,LTD AND SHOULD NOT BE USED WITHOUT WRITTEN PERMISSION		
	SCALE 5:1	SIZE A4	X.XX±.006(0.15)	.XX'±1'				

1 2 3 4 5 6 7 8