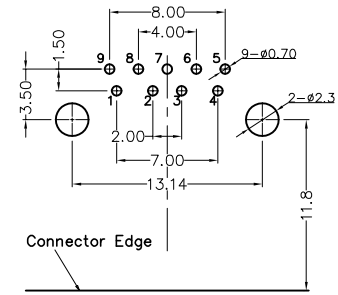
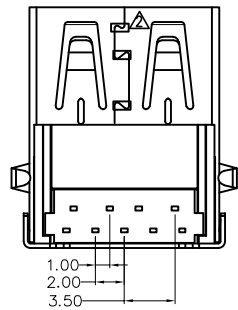
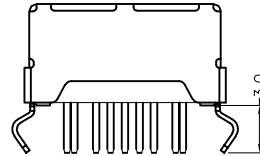
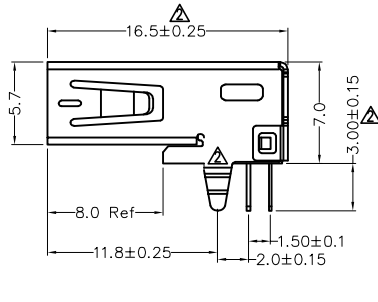
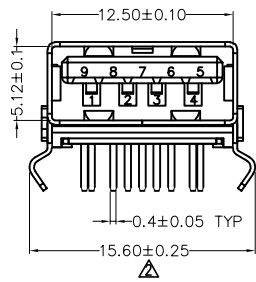
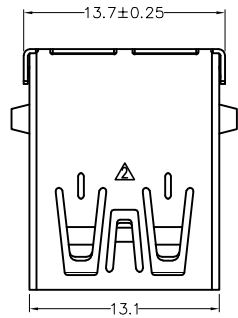


REV	LOCATIONS	DESCRIPTION	DATE	REVISER	APPD
1		Update Drawing	14/NOV/22	MATT	CHERRY
2	△	Update dimensions and structure	10/MAR/26	MATT	LEO



Recommended P.C.Board Layout
General tolerance: ±0.05

Circuits	Signal name
1	VBUS
2	D-
3	D+
4	GND
5	StdA_SSRX-
6	StdA_SSRX+
7	GND_DRAIN
8	StdA_SSTX-
9	StdA_SSTX+

SPECIFICATIONS

Electrical

Current Rating: 1.8A AC(rms)/DC for Circuits No.1&4
0.25A for other contacts

Voltage Rating: 30V AC(rms)/DC

Contact Resistance: 30mΩ Max for Circuits No.1&4
50mΩ Max for other contacts

Withstanding Voltage: 100V AC r.m.s

Insulation Resistance: 100 MΩ Min

Temperature Range—Operating: -55°C~+85°C

Mechanical

Insertion force: 3.57kgf Max.

Withdrawal force: 1.02kgf Min.(0.82kgf Min. after Durability)

Material

Housing: PBT+30%GF (UL 94V-0)

Terminal: Copper Alloy(T=0.25mm)

Shell: Brass

Plating


Terminal: Gold Flash on contact area, tin on tail,
Nickel under plating over all.

Shell: Nickel Plated

Ordering Informaion

FUS 3 33 - F D B XX K
1 2 3 4 5 6 7 8

1 Category FUS-USB	2 Series Number 3-USB 3.0	3 Distinction No. 33	4 Type F-Female	5 Assembly Layout D-DIP
6 Entry Angle B-90° Angle	7 Color-Resin K6-Black U1-Blue	8 Packaging K-Tray		

THIRD ANGLE PROJECTION		GENERAL TOLERANCES (UNLESS SPECIFIED)		APPROVE BY	DATE	PART NO.	ITEM NO.	 Building Technology Cornerstone	
DESIGN UNITS metric		X.±0.30	X.±5'	FRANK	13/MAR/18	FUS333-FDBXXK	FUS333		REV 2
SCALE	SIZE	X.XX±0.15	.XX'±1'	CHECKED BY	DATE	TITLE		SHEET NO. 1/1	
5:1	A4	X.XXX±0.10	.XXX'±0.5'	KATE	13/MAR/18	USB A-type 9Circuits 90°Angle Female(DIP)(3.0)			
DRAWN BY						DATE		THIS DRAWING CONTAINS INFORMATION THAT IS PROPRIETARY TO TXGA INDUSTRIAL ELECTRONICS(S.Z)CO.,LTD AND SHOULD NOT BE USED WITHOUT WRITTEN PERMISSION	
CHERRY						13/MAR/18			