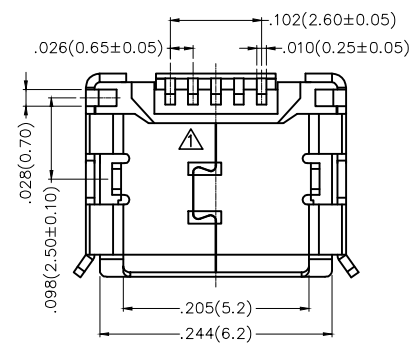
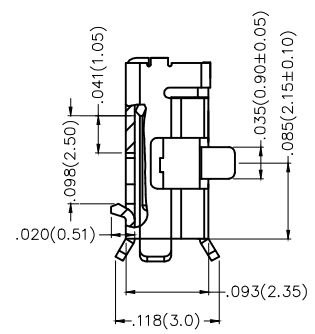
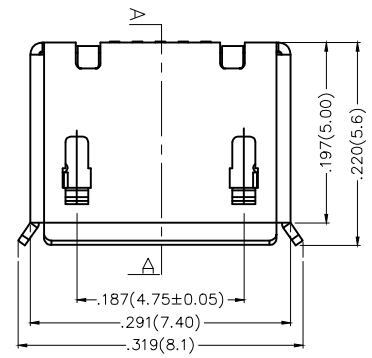
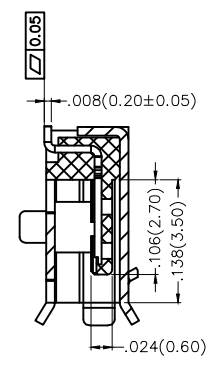
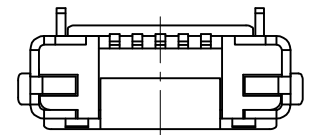


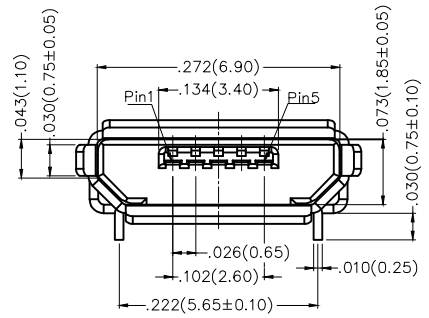
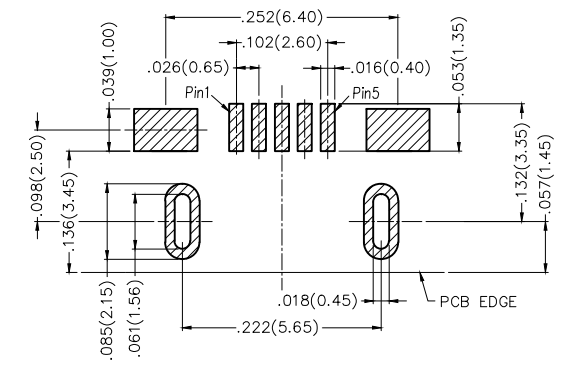
REV	LOCATIONS	DESCRIPTION	DATE	REVISER	APPD
1	△	Structure optimization	21/DEC/17	KATE	FRANK

Electrical  
 Current Rating: 1A(2,3,4Pin)AC(rms)/DC  
 1.8A(1,5Pin)AC(rms)/DC  
 Voltage Rating: 30V AC(rms)/DC  
 Contact Resistance: 30 mΩ Max  
 Insulation Resistance: 100 MΩ Min  
 Withstanding Voltage: 100V AC r.m.s  
 Temperature Range-Operating: -40°C~+85°C  
 Material and Plating  
 Housing: LCP (UL 94V-0) Black  
 Contact Pin: Phosphor Bronze/ Gold in contact area,  
 Tin on tail.  
 Shell: SUS/ Matte tin plated



Pin assignment:

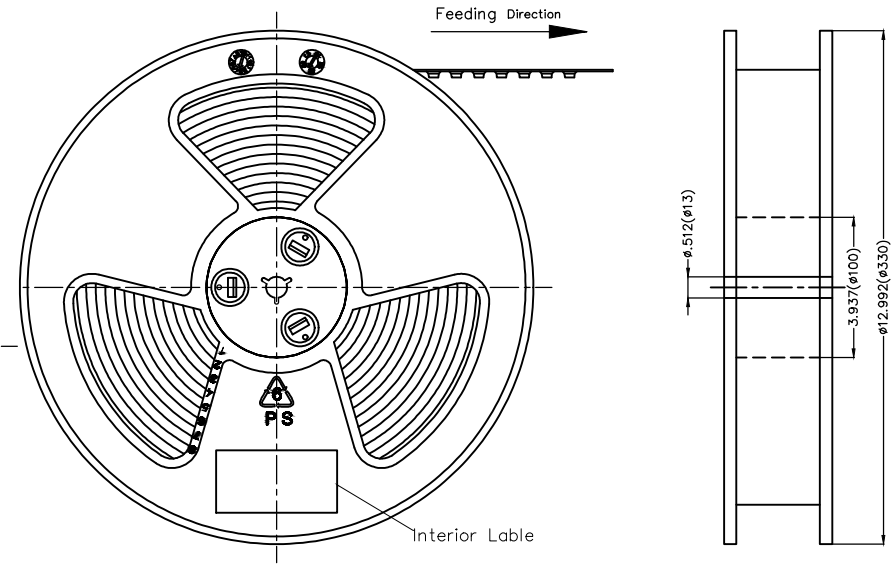
Pins	1	2	3	4	5
Signal name	VBUS	D-	D+	ID	GND



Recommended P.C.Board Layout  
 General Tolerances: ±0.05mm

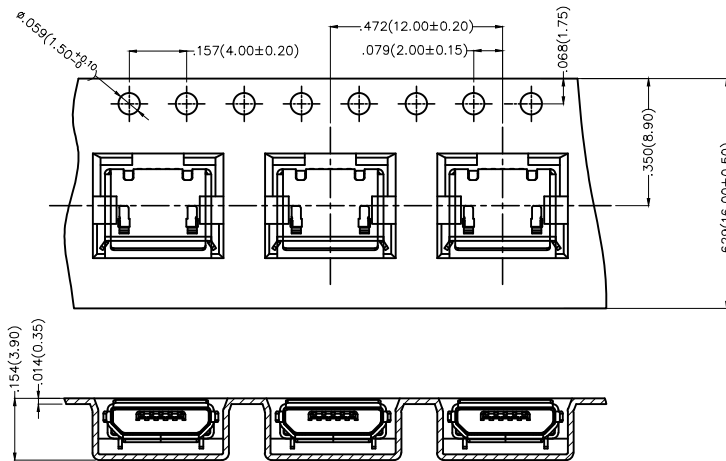
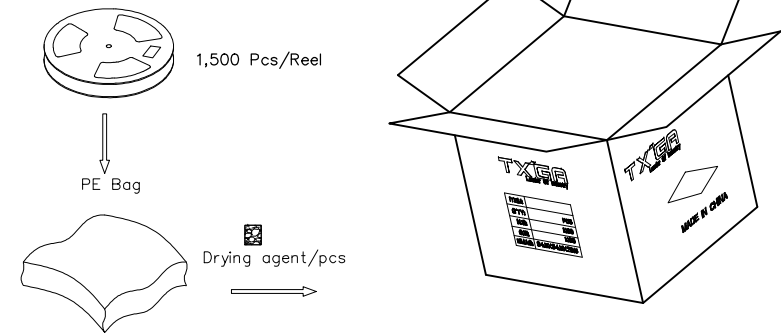
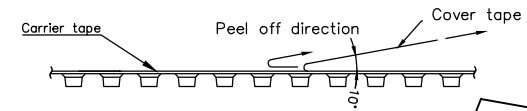
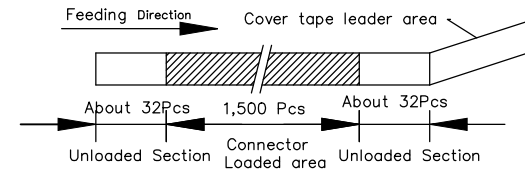
 THIRD ANGLE PROJECTION DESIGN UNITS Inch (metric) SCALE 5:1 SIZE A4	GENERAL TOLERANCES (UNLESS SPECIFIED)		APPROVE BY FRANK	DATE 21/JUN/13	PART NO. FUS407-FSBK6M	ITEM NO. FUS407	 Leader Of Industry
	X.±.012(0.30)	X.'±5'	CHECKED BY CHERRY	DATE 21/JUN/13	TITLE Micro USB 5Circuits 90°Angle Female(SMT)		
	X.XX±.008(0.20)	X'±2'	DRAWN BY JACOB	DATE 21/JUN/13	THIS DRAWING CONTAINS INFORMATION THAT IS PROPRIETARY TO TXGA INDUSTRIAL ELECTRONICS(S.Z)CO.,LTD AND SHOULD NOT BE USED WITHOUT WRITTEN PERMISSION		SHEET NO. 1/2
	X.XX±.006(0.15)	.XX±1'					
	X.XXX±.004(0.10)	.XXX±0.5'					

REV	LOCATIONS	DESCRIPTION	DATE	REVISER	APPD



Note:

1. 10 sprocket hole cumulative tolerance  $\pm 0.2$
2. Carrier camber is within 1.0mm in 250mm
3. Material: White Conductive polystyrene Alloy 100% recyclable
4. All dimensions meet EIA-481-3 requirements
5. Peel off force of cover tape & carrier tape: 20g~130g (0.2N~1.3N)
6. Component load per 13" reel: 1,500 pcs



THIRD ANGLE PROJECTION		GENERAL TOLERANCES (UNLESS SPECIFIED)		APPROVE BY	DATE	PART NO.	ITEM NO.	TXGA Leader Of Industry	
DESIGN UNITS Inch (metric)	SCALE	SIZE	X.±0.12(0.30)	FRANK	21/JUN/13	FUS407-FSBK6M	FUS407	TITLE Micro USB 5Circuits 90°Angle Female(SMT)	REV 1 SHEET NO. 2/2
	5:1	A4	X.X±0.008(0.20)	CHECKED BY	DATE	THIS DRAWING CONTAINS INFORMATION THAT IS PROPRIETARY TO TXGA INDUSTRIAL ELECTRONICS(S.Z)CO.,LTD AND SHOULD NOT BE USED WITHOUT WRITTEN PERMISSION			
			X.'±5'	CHERRY	21/JUN/13				
			.XX±1'	DRAWN BY	DATE				
			X.XXX±0.04(0.10)	JACOB	21/JUN/13				
			.XXX±0.5'						