

REV	LOCATIONS	DESCRIPTION	DATE	REVISER	APPD
1	▲	Changes the structure and dimensions	16/JUL/20	KATE	CHERRY

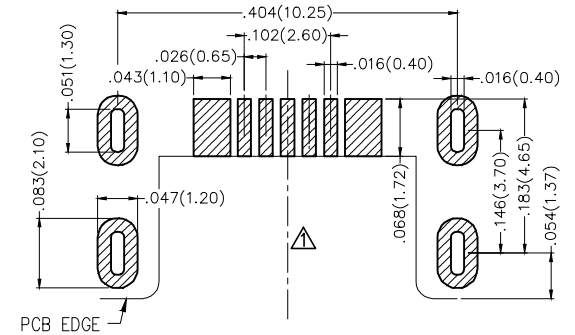
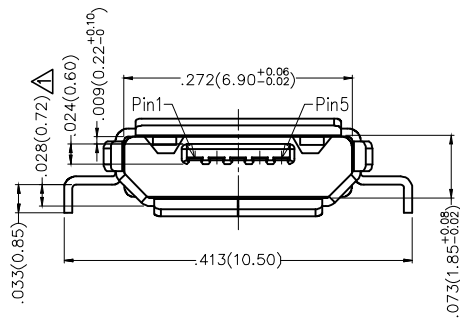
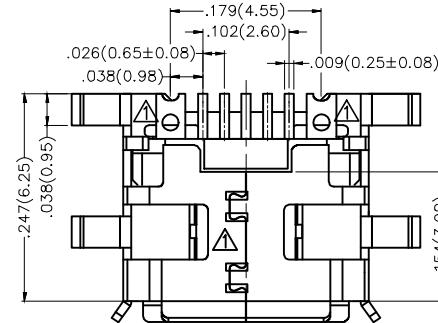
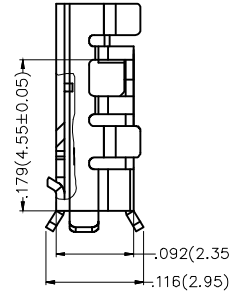
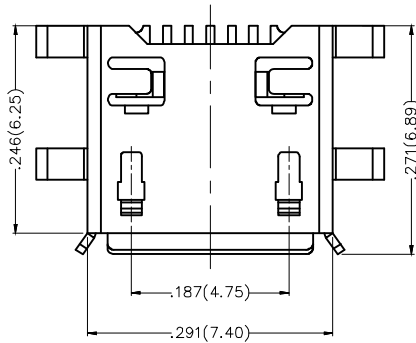
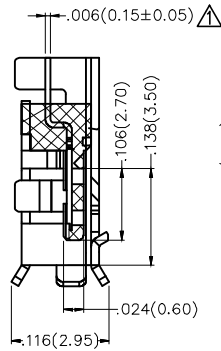
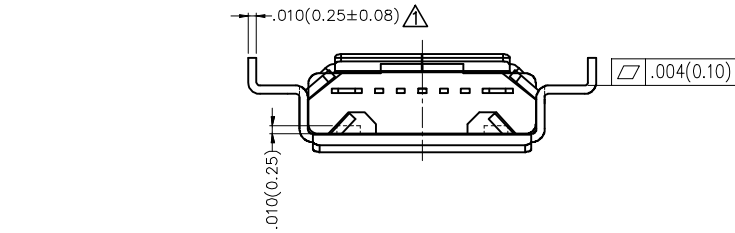
SPECIFICATIONS

Electrical

Current Rating: 1.8A Max(Pin1,5)
0.5A Max(Pin2,3,4)
Voltage Rating: 30V AC(rms)/DC
Contact Resistance: 30 mΩ Max
Withstanding Voltage: 100V AC r.m.s
Insulation Resistance: 100 MΩ Min
Temperature Range-Operating: -30°C~+80°C

Material And Plating

Housing: LCP (UL94V-0), Black
Contact: Copper Alloy /Gold plated on contact area,
Tin on solder tails
Shell: Stainless steel /Matte tin plated



Recommended P.C.Board Layout
General Tolerances: ±0.05mm

 THIRD ANGLE PROJECTION	GENERAL TOLERANCES (UNLESS SPECIFIED)		APPROVE BY FRANK	DATE 18/JUN/13	PART NO. FUS437-FSBK6M	ITEM NO. FUS437	 Leader Of Industry
	X.±.012(0.30)	X.±5'	CHECKED BY CHERRY	DATE 18/JUN/13	TITLE Micro USB 7Circuits 90°Angle Female(SMT)		
DESIGN UNITS Inch (metric)	X.X±.008(0.20)	.X'±2'	DRAWN BY KEVIN	DATE 18/JUN/13	THIS DRAWING CONTAINS INFORMATION THAT IS PROPRIETARY TO TXGA INDUSTRIAL ELECTRONICS(S.Z)CO.,LTD AND SHOULD NOT BE USED WITHOUT WRITTEN PERMISSION		REV 1
SCALE 5:1	SIZE A4	X.XX±.006(0.15)					SHEET NO. 1/1
		X.XXX±.004(0.10)					