

REV	LOCATIONS	DESCRIPTION	DATE	REVISER	APPD
1	△	update plating and dimensions	15/NOV/23	MATT	LEO

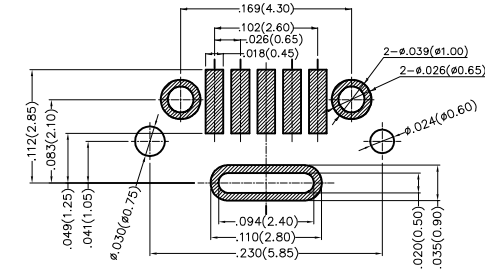
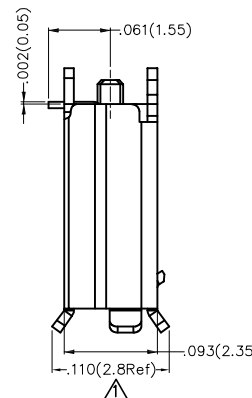
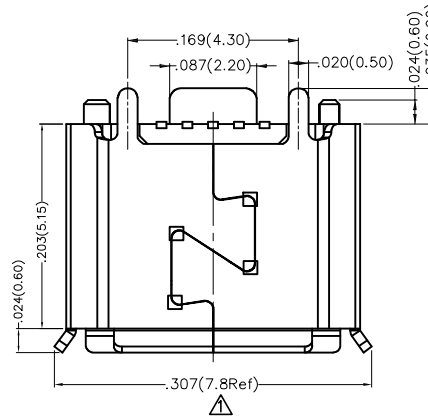
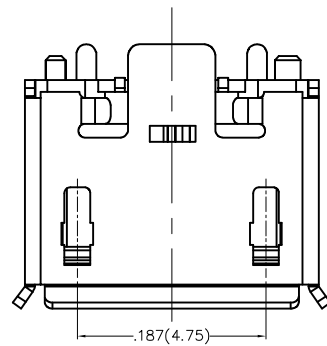
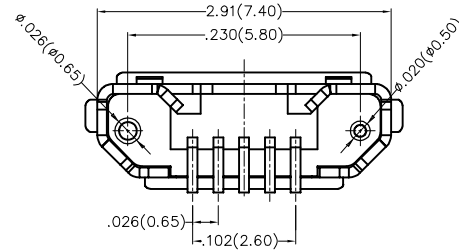
Electrical

Current Rating: 1.8A(1,5Pin)AC(rms)/DC  
0.5A(2,3,4Pin)AC(rms)/DC  
Contact Resistance: 30 mΩ Max  
50 mΩ(After Durability)

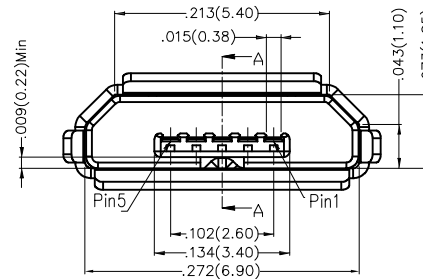
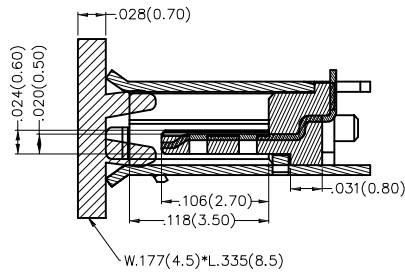
Voltage Rating: 30V AC(rms)/DC  
Insulation Resistance: 100 MΩ MIN  
Withstanding Voltage: 250V AC r.m.s  
Temperature Range—Operating: -30°C ~ +80°C

Material and Plating

Housing: LCP ( UL 94V-0) Black  
Contact Pin: Copper Alloy T=.006(0.15)/Gold Plated 0.025μm  
Shell: SUS201 T=.010(0.25)/Nickel Plated △



Recommended P.C.Board Layout  
General Tolerances: ±0.05mm



 THIRD ANGLE PROJECTION	GENERAL TOLERANCES (UNLESS SPECIFIED)		APPROVE BY FRANK	DATE 18/JUN/13	PART NO. FUS439-FSSK6M	ITEM NO. FUS439	 Building Technology Cornerstone
	X.±.012(0.30)	X.±5°	CHECKED BY CHERRY	DATE 18/JUN/13	TITLE Micro USB 5Pin B/F TYPE CONN.		
DESIGN UNITS Inch (metric)	X.X±.008(0.20)	.X°±2°	DRAWN BY KEVIN	DATE 18/JUN/13	THIS DRAWING CONTAINS INFORMATION THAT IS PROPRIETARY TO TXGA INDUSTRIAL ELECTRONICS(S.Z)CO.,LTD AND SHOULD NOT BE USED WITHOUT WRITTEN PERMISSION		
SCALE 5:1	SIZE A4	X.XX±.006(0.15)					
		X.XXX±.004(0.10)					