

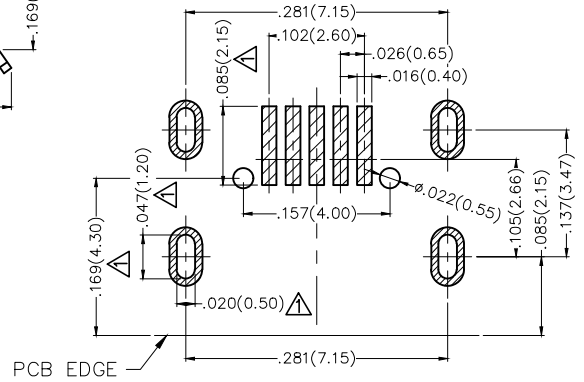
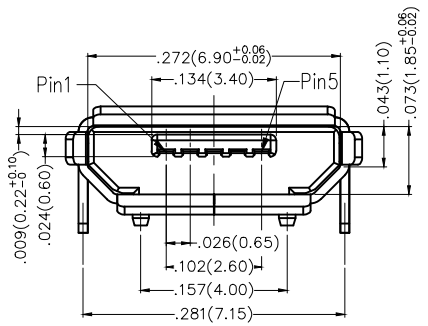
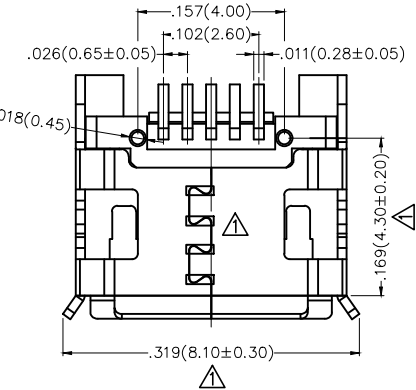
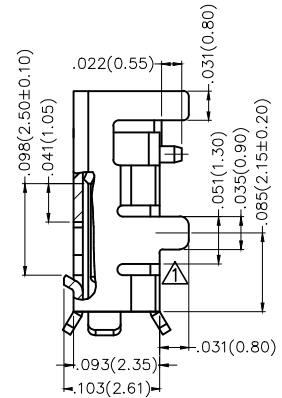
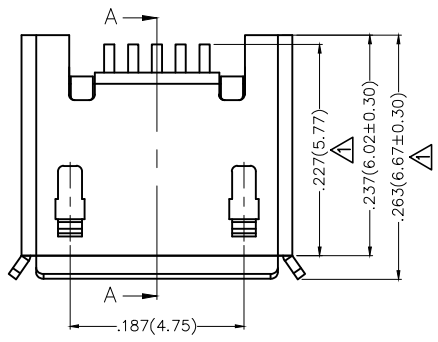
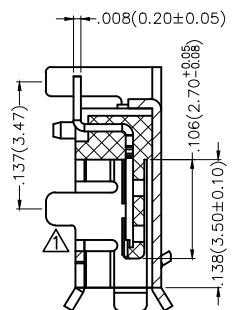
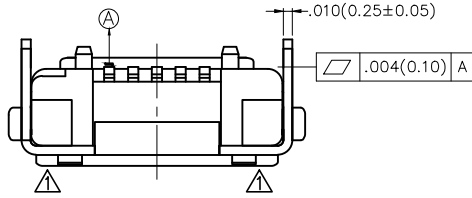
REV	LOCATIONS	DESCRIPTION	DATE	REVISER	APPD
1	△	Structure change	18/MAY/20	KATE	CHERRY

**SPECIFICATIONS**

**Electrical**  
 Current Rating: 1A Max AC(rms)/DC  
 Voltage Rating: 30V AC(rms)/DC  
 Contact Resistance: 50 mΩ Max  
 Withstanding Voltage: 100V AC r.m.s  
 Insulation Resistance: 100 MΩ Min  
 Temperature Range—Operating: -30°C~+80°C

**Mechanical**  
 Insertion Force: 3.57kgf Max  
 Withdrawal Force: 1.0kgf Min

**Material And Plating**  
 Housing: Thermoplastic UL94V-0, Black  
 Contact: Copper Alloy /Gold Plated  
 Shell: Copper Alloy /Tin Plated



Recommended P.C.Board Layout  
 General Tolerances: ±.002(0.05)

 THIRD ANGLE PROJECTION	GENERAL TOLERANCES (UNLESS SPECIFIED)		APPROVE BY	DATE	PART NO.	ITEM NO.	 Leader Of Industry
	X.±.012(0.30)	X.±5'	FRANK	16/FEB/17	FUS444-FSBK6M	FUS444	
	X.X±.008(0.20)	X.±2'	CHECKED BY	DATE	TITLE		
	X.XX±.006(0.15)	.XX±1'	CHERRY	16/FEB/17	Micro USB 5Circuits 90°Angle Female(SMT)		
SCALE	SIZE	X.XXX±.004(0.10)	.XXX±0.5'	DRAWN BY	DATE	THIS DRAWING CONTAINS INFORMATION THAT IS PROPRIETARY TO TXGA INDUSTRIAL ELECTRONICS(S.Z)CO.,LTD AND SHOULD NOT BE USED WITHOUT WRITTEN PERMISSION	
5:1	A4			KATE	16/FEB/17	REV 1	SHEET NO. 1/1