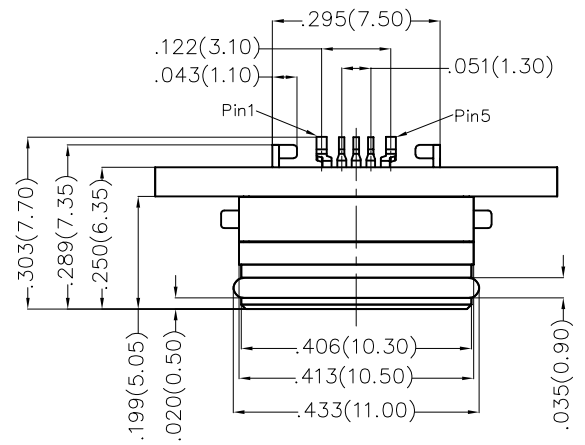
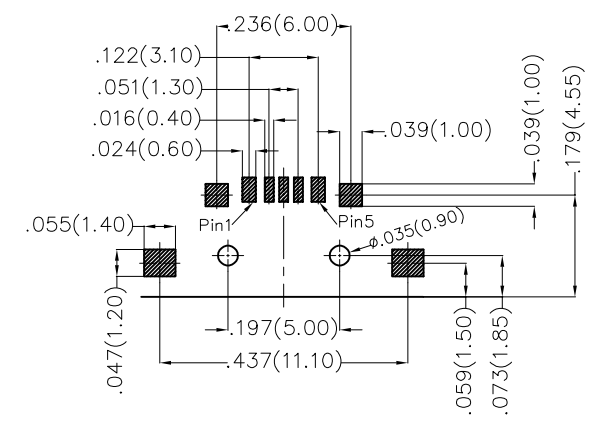
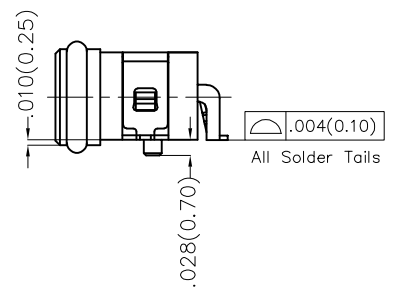
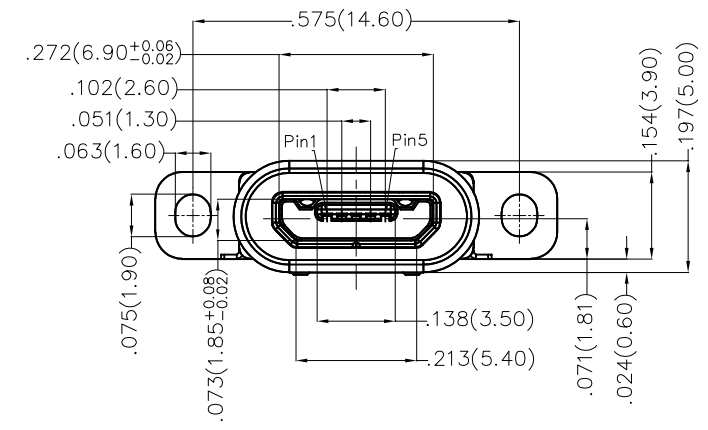


REV	LOCATIONS	DESCRIPTION	DATE	REVISER	APPD

A
B
C
D
E
F



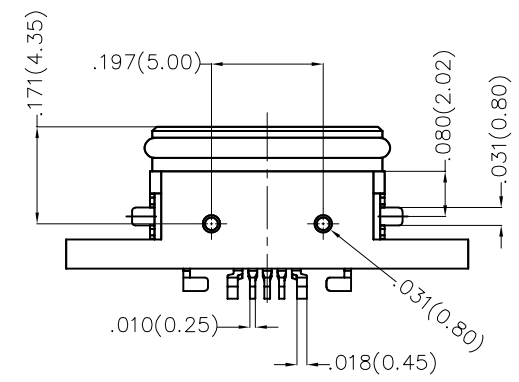
Electrical
 Current Rating: 0.5A(2,3,4Pin)AC(rms)/DC
 3.0A(1,5Pin)AC(rms)/DC
 Voltage Rating: 30V AC(rms)/DC
 Contact Resistance: 30 mΩ Max
 Insulation Resistance: 1000 MΩ MIN
 Withstanding Voltage: 500V AC r.m.s
 Temperature Range-Operating: -40°C~+80°C
 Material and Plating
 Housing: Thermoplastic(UL94V-0) Black
 Outer Shell: Thermoplastic(UL94V-0) Black
 Inner Shell: Stainless Steel/Nickel plated
 Contact Pin: Copper Alloy/Gold plated
 Oval Ring: Rubber/Black
 Ingress Protection Rating: IPX7



Pinassignment:

Pins	1	2	3	4	5
Signal name	VBUS	D-	D+	ID	GND

Recommended P.C.Board Layout
 General Tolerances: ±.002(0.05)



 THIRD ANGLE PROJECTION	GENERAL TOLERANCES (UNLESS SPECIFIED)		APPROVE BY	DATE	PART NO.	ITEM NO.	 Leader Of Industry	
	X.±.012(0.30)	X.±5'	FRANK	26/AUG/19	FUS469-FSBK6M	FUS469		
	DESIGN UNITS Inch (metric)	X.XX±.008(0.20) .XX±2'	CHECKED BY	DATE	TITLE	REV 0		SHEET NO. 1/1
	SCALE 5:1	SIZE A4	X.XX±.006(0.15) .XX±1'	CHERRY	26/AUG/19	Micro USB 5Circuits 90°Angle Female(SMT)	THIS DRAWING CONTAINS INFORMATION THAT IS PROPRIETARY TO TXGA INDUSTRIAL ELECTRONICS(S.Z)CO.,LTD AND SHOULD NOT BE USED WITHOUT WRITTEN PERMISSION	
		X.XXX±.004(0.10) .XXX±0.5'	DRAWN BY ZOEY	DATE 26/AUG/19				