

REV	LOCATIONS	DESCRIPTION	DATE	REVISER	APPD
1	Δ	Structure Change	2020.10.29	CHERRY	KATE

SPECIFICATIONS

Electrical

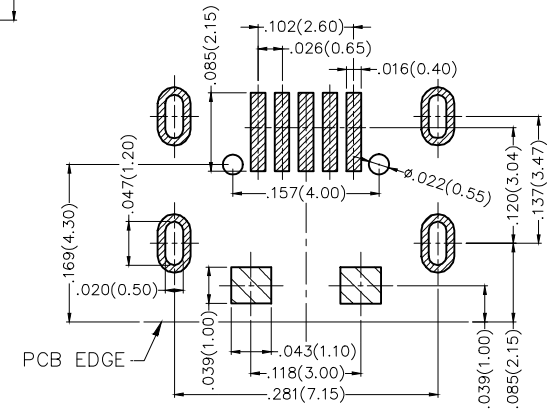
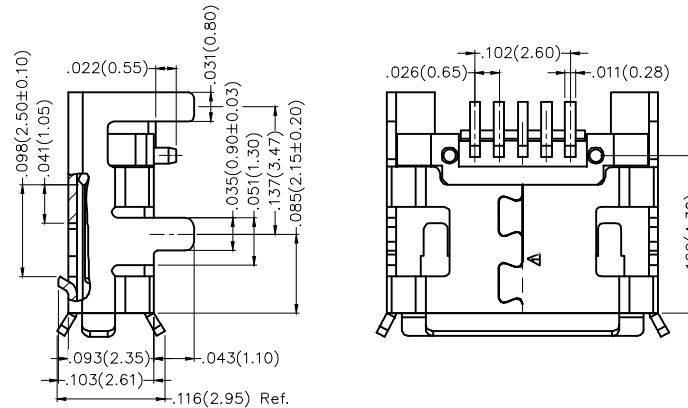
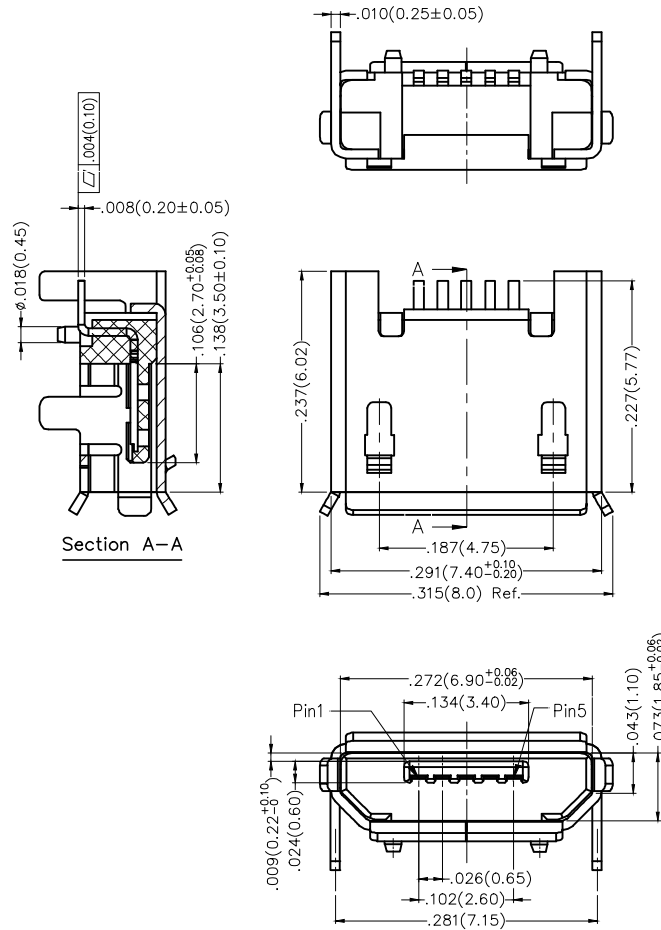
Current Rating: 1A Max AC(rms)/DC
Voltage Rating: 30V AC(rms)/DC
Contact Resistance: 50 mΩ Max
Withstanding Voltage: 100V AC r.m.s
Insulation Resistance: 100 MΩ Min
Temperature Range-Operating: -30°C~+80°C

Mechanical

Insertion Force: 3.57kgf Max
Withdrawal Force: 1.0kgf Min

Material And Plating

Housing: Thermoplastic (UL94V-0), Black
Contact: Copper Alloy /Gold Plated
Shell: Copper Alloy /Tin Plated



Recommended P.C.Board Layout

General Tolerances: $\pm .002(0.05)$

Pinassignment:

Pins	1	2	3	4	5
Signal name	VBUS	D-	D+	ID	GND

<p>THIRD ANGLE PROJECTION</p>	GENERAL TOLERANCES (UNLESS SPECIFIED)		APPROVE BY	DATE	PART NO.	ITEM NO.	<p>Leader Of Industry</p>	
	X.±.012(0.30)	X.±5'	FRANK	13/FEB/18	FUS477-FSBK6M	FUS477		
DESIGN UNITS	X.X±.008(0.20)	X.±2'	CHECKED BY	DATE	TITLE		REV 1	SHEET NO. 1/1
Inch (metric)	X.XX±.006(0.15)	.XX±1'	CHERRY	13/FEB/18	Micro USB 5Circuits 90°Angle Female(SMT)			
SCALE	X.XXX±.004(0.10)	.XXX±0.5'	DRAWN BY	DATE	THIS DRAWING CONTAINS INFORMATION THAT IS PROPRIETARY TO TXGA INDUSTRIAL ELECTRONICS(S.Z)CO.,LTD AND SHOULD NOT BE USED WITHOUT WRITTEN PERMISSION			
5:1			KATE	13/FEB/18				