

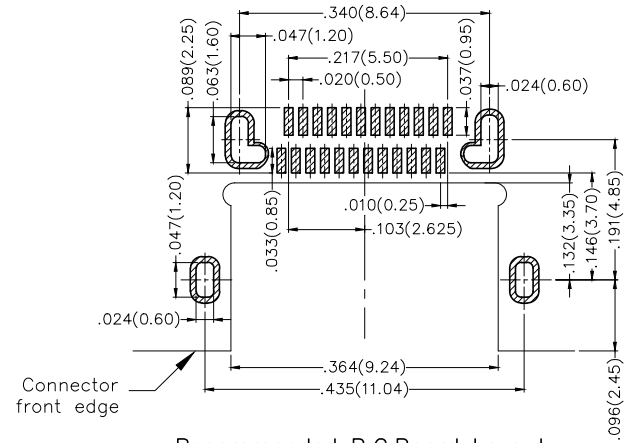
REV	LOCATIONS	DESCRIPTION	DATE	REVISER	APPD
1	△	Amend Electrical specification	30/JUL/25	KATE	LEO

SPECIFICATIONS

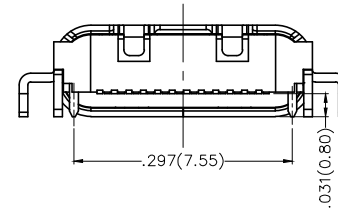
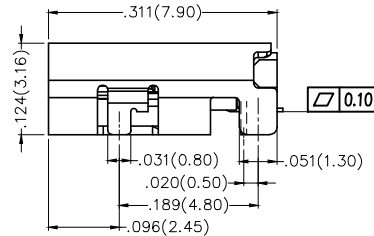
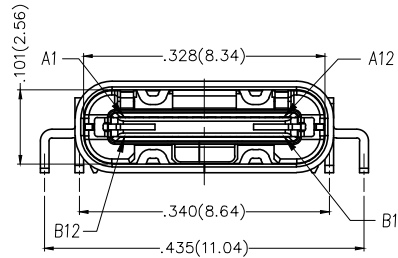
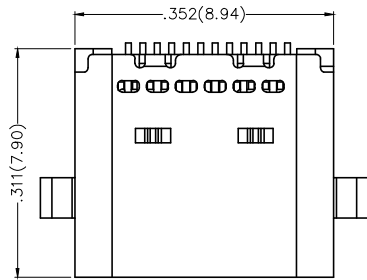
△ Electrical
 Current Rating: 5.0A AC(rms)/DC Max.
 Voltage Rating: 5V AC(rms)/DC
 Contact Resistance: 40 mΩ Max.
 Withstanding Voltage: 100V AC r.m.s
 Insulation Resistance: 100 MΩ Min.
 Temperature Range-Operating: -25°C~+85°C

Mechanical
 Insertion Force: 5~20N
 Withdrawal Force: 8~20N
 Durability: 10,000 cycles

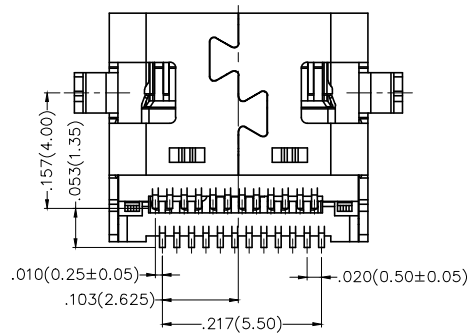
Material and Plating
 Housing: Thermoplastic (UL 94V-0) Black
 Terminal: Copper alloy/ Gold plated
 Shell: Stainless steel/ Nickel plated
 MID plate: Stainless steel
 EMI: Stainless steel/ Nickel plated



Recommended P.C.Board Layout
 General Tolerances: ±0.05mm



Circuits	A	Circuits	B
1	GND	12	GND
2	SSTXP1	11	SSRXP1
3	SSTXN1	10	SSRXN1
4	VBUS	9	VBUS
5	CC1	8	SBU2
6	DP1	7	DN2
7	DN1	6	DP2
8	SBU1	5	CC2
9	VBUS	4	VBUS
10	SSRXN2	3	SSTXN2
11	SSRXP2	2	SSTXP2
12	GND	1	GND



 THIRD ANGLE PROJECTION DESIGN UNITS Inch (metric) SCALE 5:1 SIZE A4	GENERAL TOLERANCES (UNLESS SPECIFIED)		APPROVE BY FRANK	DATE 06/MAR/17	PART NO. FUS604-FSBK6M	ITEM NO. FUS604	 Leader Of Industry REV 1 SHEET NO. 1/1
	X.±.012(0.30)	X.±5'	CHECKED BY CHERRY	DATE 06/MAR/17			
	X.X±.008(0.20)	.X'±2"	DRAWN BY KATE	DATE 06/MAR/17			
	X.XX±.006(0.15)	.XX'±1"					
	X.XXX±.004(0.10)	.XXX'±0.5'			THIS DRAWING CONTAINS INFORMATION THAT IS PROPRIETARY TO TXGA INDUSTRIAL ELECTRONICS(S.Z)CO.,LTD AND SHOULD NOT BE USED WITHOUT WRITTEN PERMISSION		



REV 1 SHEET NO. 1/1

THIS DRAWING CONTAINS INFORMATION THAT IS PROPRIETARY TO TXGA INDUSTRIAL ELECTRONICS(S.Z)CO.,LTD AND SHOULD NOT BE USED WITHOUT WRITTEN PERMISSION