

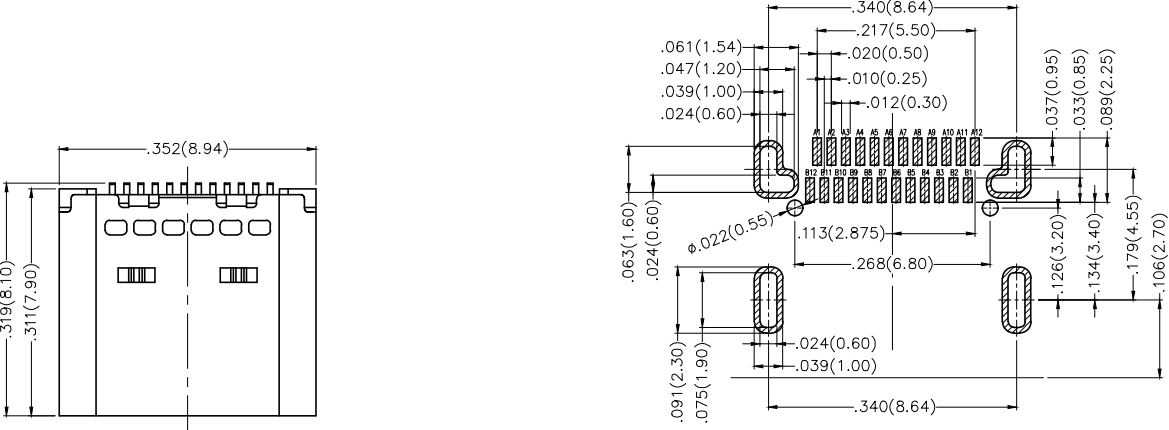
REV	LOCATIONS	DESCRIPTION	DATE	REVISER	APPD
1		Structure optimization	17/SEP/18	KATE	ANDY
2		Structural changes	21/JUL/12	KATE	CHERRY

SPECIFICATIONS

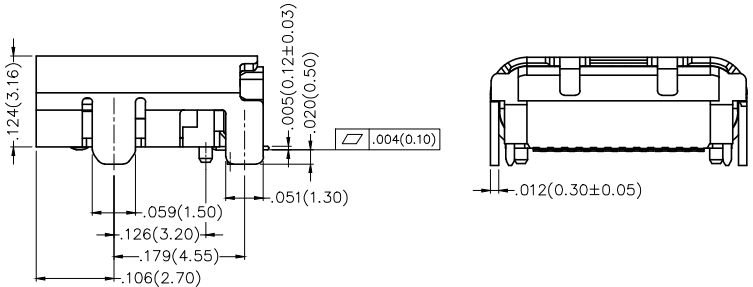
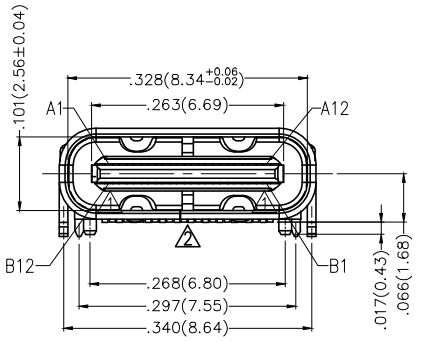
Electrical
 Current Rating: 5.0A AC(rms)/DC
 Voltage Rating: 5V AC(rms)/DC
 Contact Resistance: 40 mΩ Max
 Withstanding Voltage: 100V AC r.m.s
 Insulation Resistance: 100 MΩ Min
 Temperature Range-Operating: -25°C~+85°C

Mechanical
 Insertion Force: 5~20N
 Withdrawal Force: 8~20N
 Durability: 10,000 Cycles

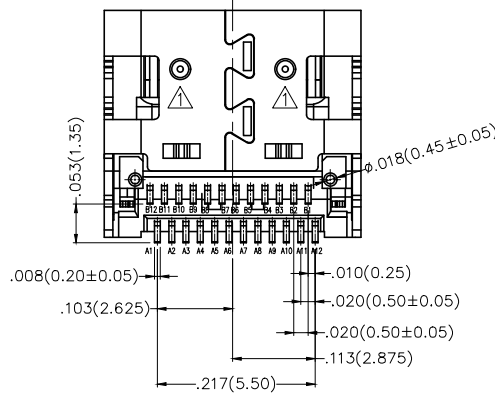
Material and Plating
 Housing: Thermoplastic (UL 94V-0) Black
 Terminal: Copper Alloy/ Gold Plated
 Shell: Stainless steel/ Nickel Plated
 MID plate: Stainless steel/ Tin Plated
 EMI plate: Stainless steel/ Clear only



Recommended P.C.Board Layout
 General Tolerances: ±0.05mm



Circuits	A	Circuits	B
1	GND	12	GND
2	SSTXP1	11	SSRXP1
3	SSTXN1	10	SSRXN1
4	VBUS	9	VBUS
5	CC1	8	SBU2
6	DP1	7	DN2
7	DN1	6	DP2
8	SBU1	5	CC2
9	VBUS	4	VBUS
10	SSRXN2	3	SSTXN2
11	SSRXP2	2	SSTXP2
12	GND	1	GND



	GENERAL TOLERANCES (UNLESS SPECIFIED)		APPROVE BY	DATE	PART NO.	ITEM NO.	
	X.±.012(0.30)	X.±5'	FRANK	06/MAR/17			
	DESIGN UNITS	X.X±.008(0.20)	X.±2'	CHECKED BY	DATE	TITLE	
	Inch (metric)	X.XX±.006(0.15)	.XX±1'	CHERRY	06/MAR/17	USB C-type 90° Angle Female(SMT)(3.1)	
SCALE	SIZE	X.XXX±.004(0.10)	.XXX±0.5'	DRAWN BY	DATE	REV 2	SHEET NO. 1/1
5:1	A4			KATE	06/MAR/17	THIS DRAWING CONTAINS INFORMATION THAT IS PROPRIETARY TO TXGA INDUSTRIAL ELECTRONICS(S.Z)CO.,LTD AND SHOULD NOT BE USED WITHOUT WRITTEN PERMISSION	

