

REV	LOCATIONS	DESCRIPTION	DATE	REVISER	APPD
1	△	Correct the plating of terminals	24/AUG/20	KATE	CHERRY
2	△	1.Structural changes 2.Add packaging details	14/MAR/24	MATT	LEO

SPECIFICATIONS

Electrical

Current Rating: 3.0A AC(rms)/DC
Voltage Rating: 100V AC(rms)/DC
Contact Resistance: 40 mΩ Max
Withstanding Voltage: 500V AC r.m.s
Insulation Resistance: 100 MΩ Min
Temperature Range-Operating: -30°C~+85°C

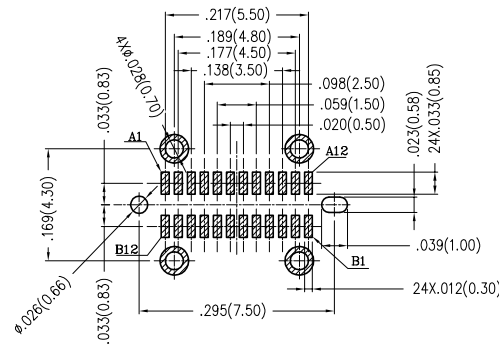
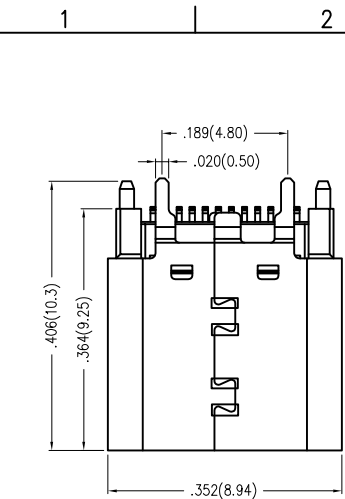
Mechanical

Insertion Force: 5~20N
Withdrawal Force: 8~20N
Durability: 10,000 Cycles

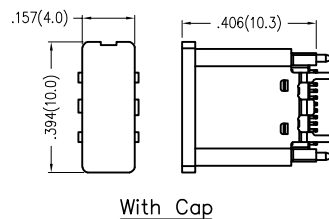
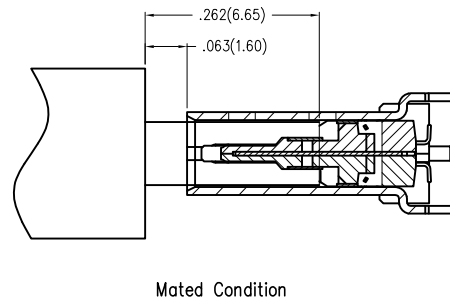
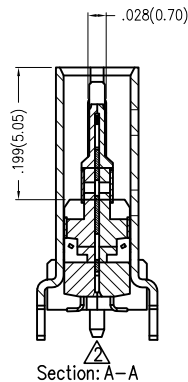
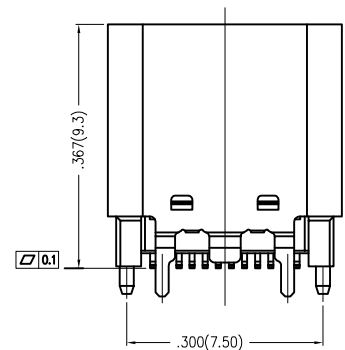
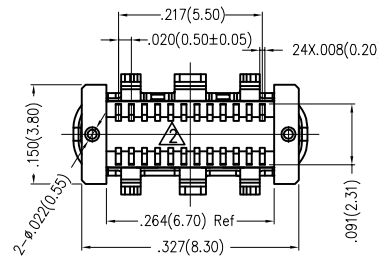
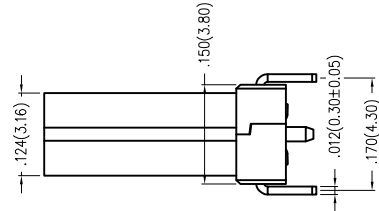
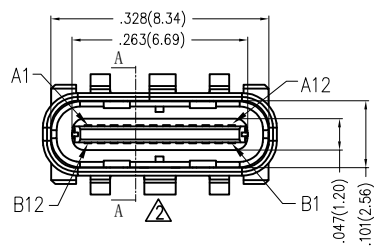
Material and Plating

Housing: Thermoplastic(LCP) (UL 94V-0) Black
Terminal: Copper alloy/ Gold plated on contact area,
tin plated on solder area
Shell: Stainless steel/ Nickel Plated

Circuits	A	Circuits	B
1	GND	12	GND
2	SSTXP1	11	SSRXP1
3	SSTXN1	10	SSRXN1
4	VBUS	9	VBUS
5	CC1	8	SBU2
6	DP1	7	DN2
7	DN1	6	DP2
8	SBU1	5	CC2
9	VBUS	4	VBUS
10	SSRXN2	3	SSTXN2
11	SSRXP2	2	SSTXP2
12	GND	1	GND



Recommended P.C Board Layout
General Tolerances: ±0.05mm

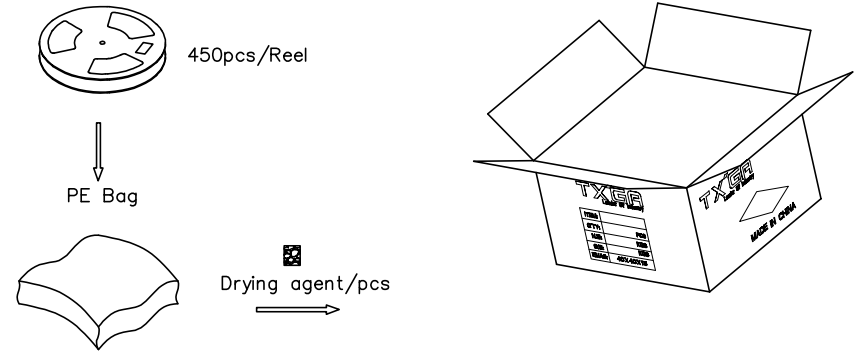
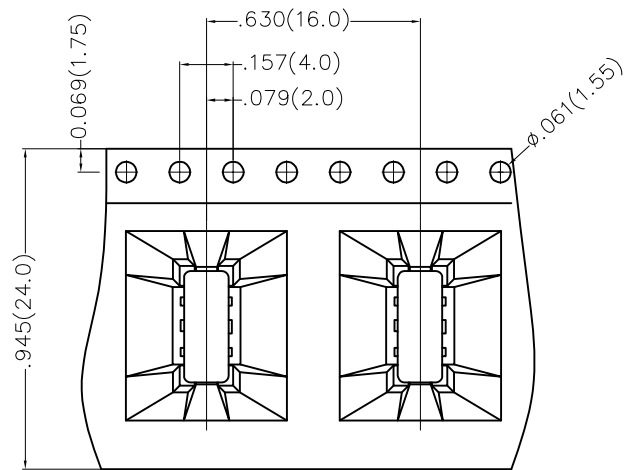
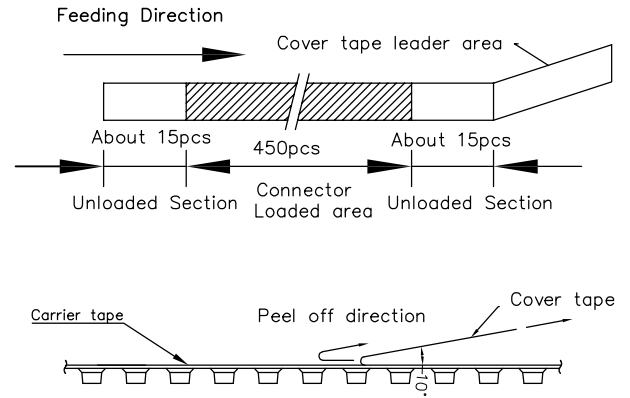
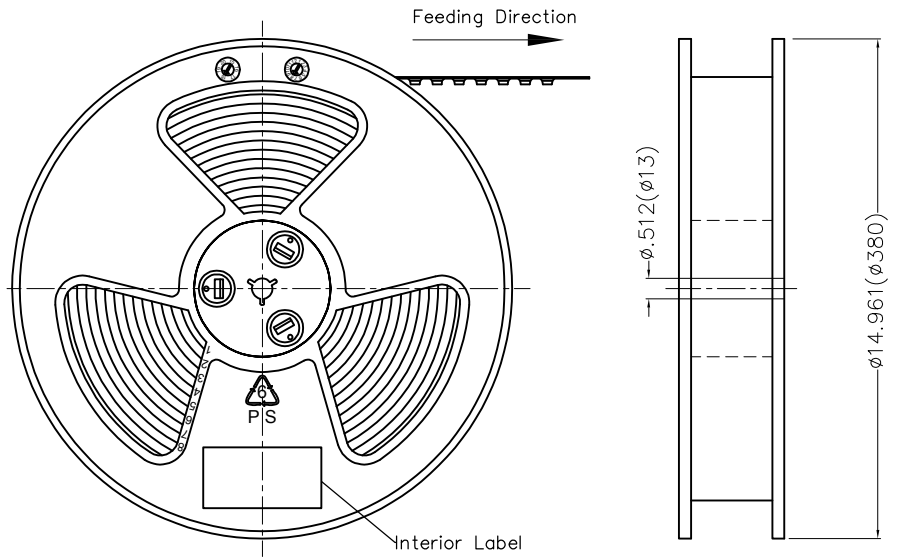


With Cap

 THIRD ANGLE PROJECTION	GENERAL TOLERANCES (UNLESS SPECIFIED)		APPROVE BY FRANK	DATE 21/APR/17	PART NO. FUS607-FSSK6M	ITEM NO. FUS607	 Building Technology Cornerstone
	X.±.012(0.30)	X.±5°	CHECKED BY CHERRY	DATE 21/APR/17	TITLE USB C-type 180° Vertical Female(SMT)(3.1)		
DESIGN UNITS Inch (metric)	X.X±.008(0.20)	.X'±2°	DRAWN BY LXF	DATE 21/APR/17	THIS DRAWING CONTAINS INFORMATION THAT IS PROPRIETARY TO TXGA INDUSTRIAL ELECTRONICS(S.Z)CO.,LTD AND SHOULD NOT BE USED WITHOUT WRITTEN PERMISSION		
SCALE 5:1	SIZE A4	X.XX±.006(0.15)					
		X.XXX±.004(0.10)					

REV	LOCATIONS	DESCRIPTION	DATE	REVISER	APPD

- Note:
- 1.10 sprocket hole cumulative tolerance±0.2
 - 2.Carrier camber is within 1.0mm in 250mm
 - 3.Material: Clear conductive polystyrene Alloy 100% recyclable
 - 4.All dimensions meet EIA-481-3 requirements
 - 5.Peel off force of cover tape & carrier tape: 20g~130g (0.2N~1.3N)
 - 6.Component load per 15" reel: 450 pcs



 THIRD ANGLE PROJECTION	GENERAL TOLERANCES (UNLESS SPECIFIED)		APPROVE BY	DATE	PART NO.	ITEM NO.	 Building Technology Cornerstone
	X.±.012(0.30)	X.±5'	FRANK	21/APR/17	FUS607-FSSK6M	FUS607	
DESIGN UNITS Inch (metric)	X.X±.008(0.20)	.X'±2'	CHECKED BY	DATE	TITLE		REV 2
	X.XX±.006(0.15)	.XX'±1'	CHERRY	21/APR/17	USB C-type 180° Vertical Female(SMT)(3.1)		SHEET NO. 2/2
SCALE 5:1	SIZE A4	X.XXX±.004(0.10)	.XXX'±0.5'	DRAWN BY	DATE	THIS DRAWING CONTAINS INFORMATION THAT IS PROPRIETARY TO TXGA INDUSTRIAL ELECTRONICS(S.Z)CO.,LTD AND SHOULD NOT BE USED WITHOUT WRITTEN PERMISSION	
			LXF		21/APR/17		