

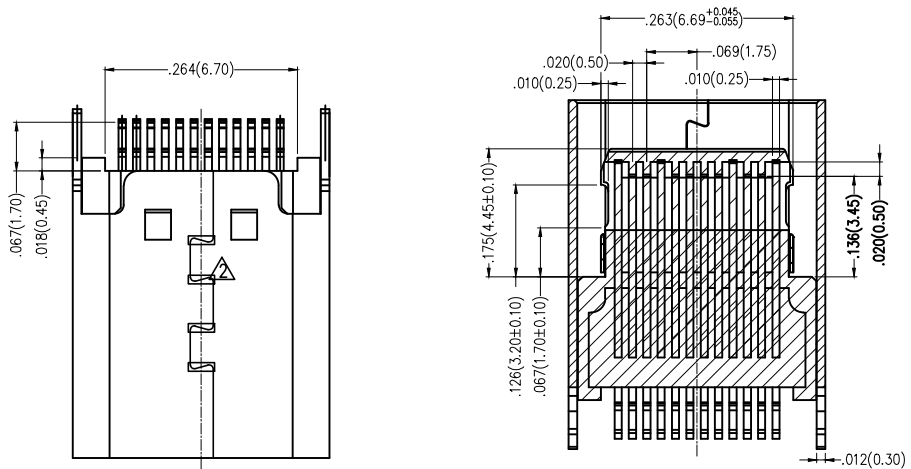
REV	LOCATIONS	DESCRIPTION	DATE	REVISER	APPD
1		Structural changes	24/AUG/20	KATE	CHERRY
2		Structural changes	29/OCT/24	MATT	LEO
3		Add size	4/MAR/26	NICK	LEO

SPECIFICATIONS

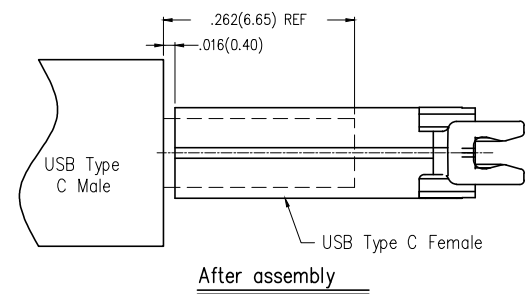
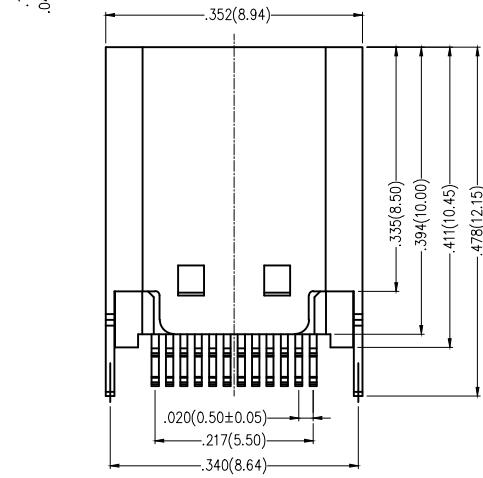
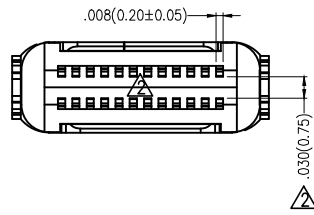
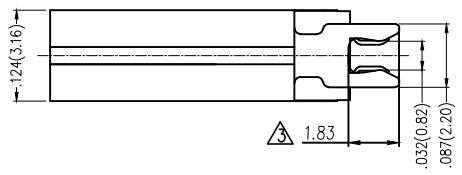
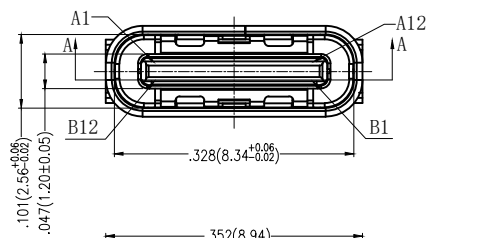
Electrical
 Current Rating: 5.0A AC(rms)/DC
 Voltage Rating: 5V AC(rms)/DC
 Contact Resistance: 40 mΩ Max
 Withstanding Voltage: 100V AC r.m.s
 Insulation Resistance: 100 MΩ Min
 Temperature Range—Operating: -25°C~+85°C

Mechanical
 Insertion Force: 5~20N
 Withdrawal Force: 8~20N
 Durability: 10,000 Cycles

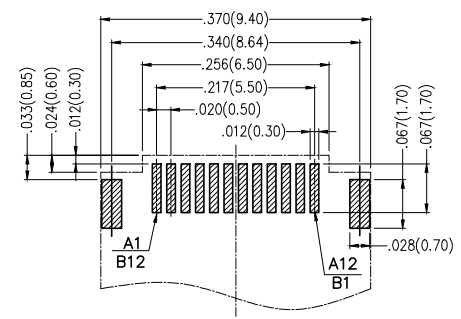
Material and Plating
 Housing: LCP (UL 94V-0) Black
 Contact: Copper Alloy/ Gold plated on contact area,
 matte tin plated on solder area
 Shell: Stainless steel/ Nickel Plated
 MID Plate: Stainless steel/ Clear only
 EMI Plate: Stainless steel/ Nickel Plated



SECTION A-A
SCALE 1:1



Circuits	A	Circuits	B
1	GND	12	GND
2	SSTXP1	11	SSRXP1
3	SSTXN1	10	SSRXN1
4	VBUS	9	VBUS
5	CC1	8	SBU2
6	DP1	7	DN2
7	DN1	6	DP2
8	SBU1	5	CC2
9	VBUS	4	VBUS
10	SSRXN2	3	SSTXN2
11	SSRXP2	2	SSTXP2
12	GND	1	GND



Recommended P.C.Board Layout
General Tolerances: ±0.05mm

 THIRD ANGLE PROJECTION DESIGN UNITS Inch (metric) SCALE 5:1 SIZE A4	GENERAL TOLERANCES (UNLESS SPECIFIED) X.±.012(0.30) X.±5' X.X±.008(0.20) X.±2' X.XX±.006(0.15) X.X±1' X.XXX±.004(0.10) X.XX±0.5'		APPROVE BY FRANK CHECKED BY CHERRY DRAWN BY LXF	DATE 21/APR/17 DATE 21/APR/17 DATE 21/APR/17	PART NO. FUS608-FCSK6K TITLE USB C-type 180° Vertical Female(SMT)(3.1)	ITEM NO. FUS608	 Building Technology Cornerstone REV 3 SHEET NO. 1/1
	THIS DRAWING CONTAINS INFORMATION THAT IS PROPRIETARY TO TXGA INDUSTRIAL ELECTRONICS(S.Z)CO.,LTD AND SHOULD NOT BE USED WITHOUT WRITTEN PERMISSION						