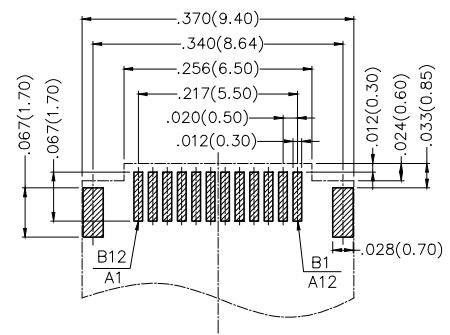
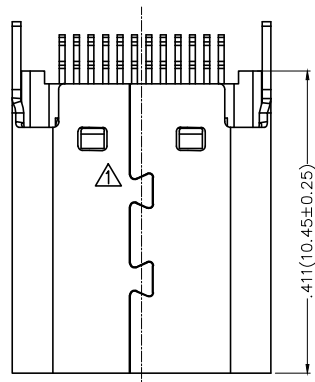


REV	LOCATIONS	DESCRIPTION	DATE	REVISER	APPD
1	△	Structural changes	08/JUL/20	KATE	CHERRY



**Recommended P.C.Board Layout**  
 Thickness: .039(1.00±0.05)  
 General Tolerances: ±.002(0.05)

**SPECIFICATIONS**

**Electrical**

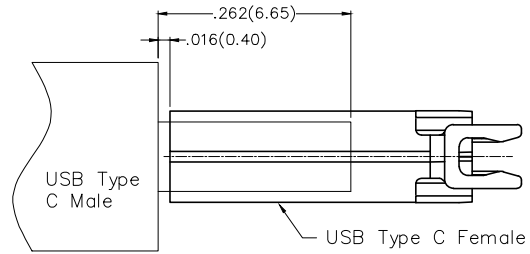
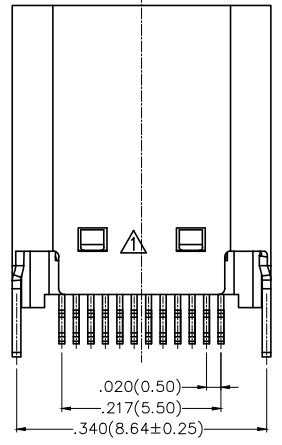
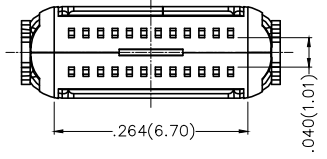
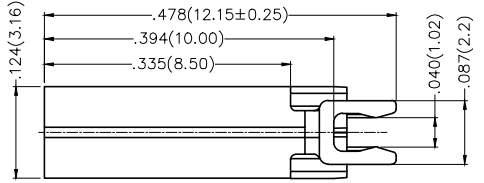
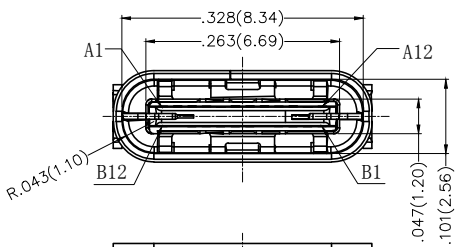
Current Rating: 5.0A AC(rms)/DC  
 Voltage Rating: 5V AC(rms)/DC  
 Contact Resistance: 40 mΩ Max  
 Withstanding Voltage: 100V AC r.m.s  
 Insulation Resistance: 100 MΩ Min  
 Temperature Range-Operating: -25°C~+85°C

**Mechanical**

Insertion Force: 5~20N  
 Withdrawal Force: 8~20N  
 Durability: 10,000 Cycles

**Material and Plating**

Housing: LCP (UL 94V-0) Black  
 Shell: Stainless steel/ Nickel Plated  
 Contact: Copper Alloy/ Gold plated on contact area, matte tin plated on solder area  
 MID Plate: Stainless steel/ Clear only  
 EMI Plate: Stainless steel/ Nickel Plated



After assembly

Circuits	A	Circuits	B
1	GND	12	GND
2	SSTXP1	11	SSRXP1
3	SSTXN1	10	SSRXN1
4	VBUS	9	VBUS
5	CC1	8	SBU2
6	DP1	7	DN2
7	DN1	6	DP2
8	SBU1	5	CC2
9	VBUS	4	VBUS
10	SSRXN2	3	SSTXN2
11	SSRXP2	2	SSTXP2
12	GND	1	GND

 THIRD ANGLE PROJECTION	GENERAL TOLERANCES (UNLESS SPECIFIED)		APPROVE BY FRANK	DATE 21/APR/17	PART NO. FUS609-FCSK6L	ITEM NO. FUS609
	X.±.012(0.30)	X.±5'	CHECKED BY CHERRY	DATE 21/APR17	TITLE USB C-type 180° Vertical Female(SMT)(3.1)	
	X.X±.008(0.20)	.X'±2"	DRAWN BY LXF	DATE 21/APR/17	REV 1	SHEET NO. 1/1
	X.XX±.006(0.15)	.XX'±1"	THIS DRAWING CONTAINS INFORMATION THAT IS PROPRIETARY TO TXGA INDUSTRIAL ELECTRONICS(S.Z)CO.,LTD AND SHOULD NOT BE USED WITHOUT WRITTEN PERMISSION			
SCALE 5:1	SIZE A4	X.XXX±.004(0.10)	.XXX'±0.5'			



THIS DRAWING CONTAINS INFORMATION THAT IS PROPRIETARY TO TXGA INDUSTRIAL ELECTRONICS(S.Z)CO.,LTD AND SHOULD NOT BE USED WITHOUT WRITTEN PERMISSION