

REV	LOCATIONS	DESCRIPTION	DATE	REVISER	APPD

**SPECIFICATIONS**

**Electrical**

Current Rating: 1.25A AC(rms)/DC  
Voltage Rating: 20V AC(rms)/DC  
Contact Resistance: 40mΩ Max  
Insulation Resistance: 100MΩ Min  
Withstanding Voltage: 100V AC r.m.s

**Mechanical**

Mating force: 0.5–2.0KG.F  
Retention force: 0.8–2.0KG.F  
Durability: 10000 cycles Min.

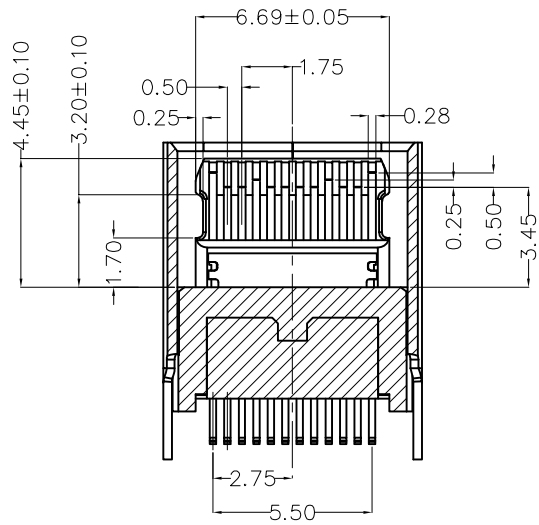
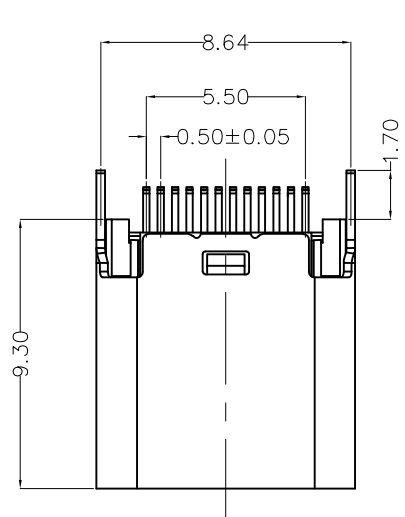
**Environmental**

Operating Temperature: -25°C~+85°C

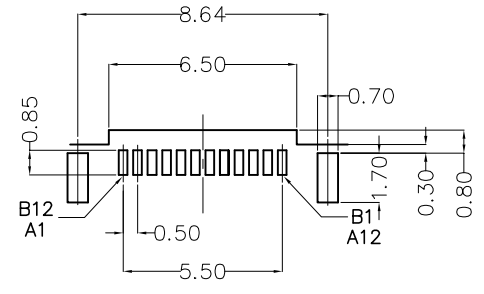
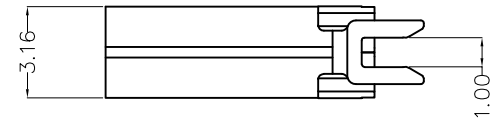
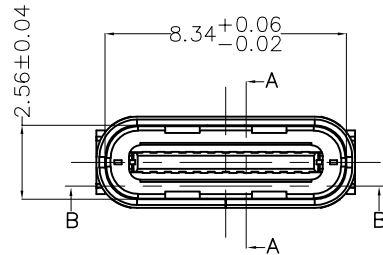
**Material and plating**

Housing: LCP (UL 94V-0), Black  
Contacts: Copper Alloy/Gold plated  
Shell: Stainless steel/Nikel plated

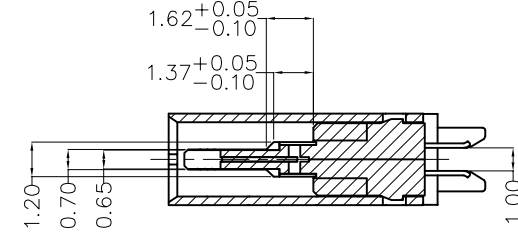
Circuits	A	Circuits	B
A1	GND	B12	GND
A2	SSTXp1	B11	SSRXp1
A3	SSTXn1	B10	SSRXn1
A4	VBUS	B9	VBUS
A5	CC1	B8	SBU2
A6	DP1	B7	DN2
A7	DN1	B6	DP2
A8	SBU1	B5	CC2
A9	VBUS	B4	VBUS
A10	SSRXn2	B3	SSTXn2
A11	SSRXp2	B2	SSTXp2
A12	GND	B1	GND



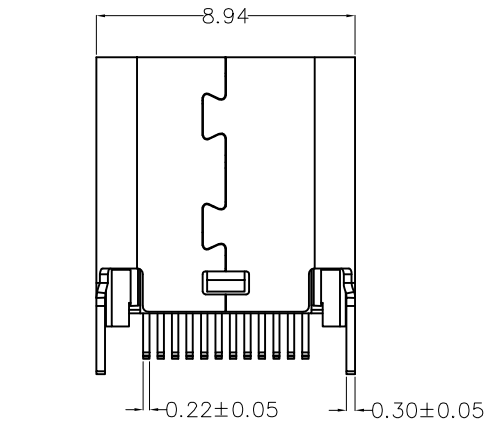
Section B-B



Recommended P.C.Board Layout  
General tolerances ±0.05mm



Section A-A



<p>THIRD ANGLE PROJECTION</p>	GENERAL TOLERANCES (UNLESS SPECIFIED)		APPROVE BY FRANK	DATE 13/SEP/22	PART NO. FUS6106-FCSBKK	ITEM NO. FUS6106	<p>Leader Of Industry</p>	
	X.±0.30	X.±5°	CHECKED BY CHERRY	DATE 13/SEP/22	TITLE USB C-type 180° Vertical Female(Splint)(3.1)			REV 0
	X.XX±0.15	.XX'±1°	DRAWN BY YYQ	DATE 13/SEP/22	THIS DRAWING CONTAINS INFORMATION THAT IS PROPRIETARY TO TXGA INDUSTRIAL ELECTRONICS(S.Z)CO.,LTD AND SHOULD NOT BE USED WITHOUT WRITTEN PERMISSION			
	X.XXX±0.10	.XXX'±0.5°						