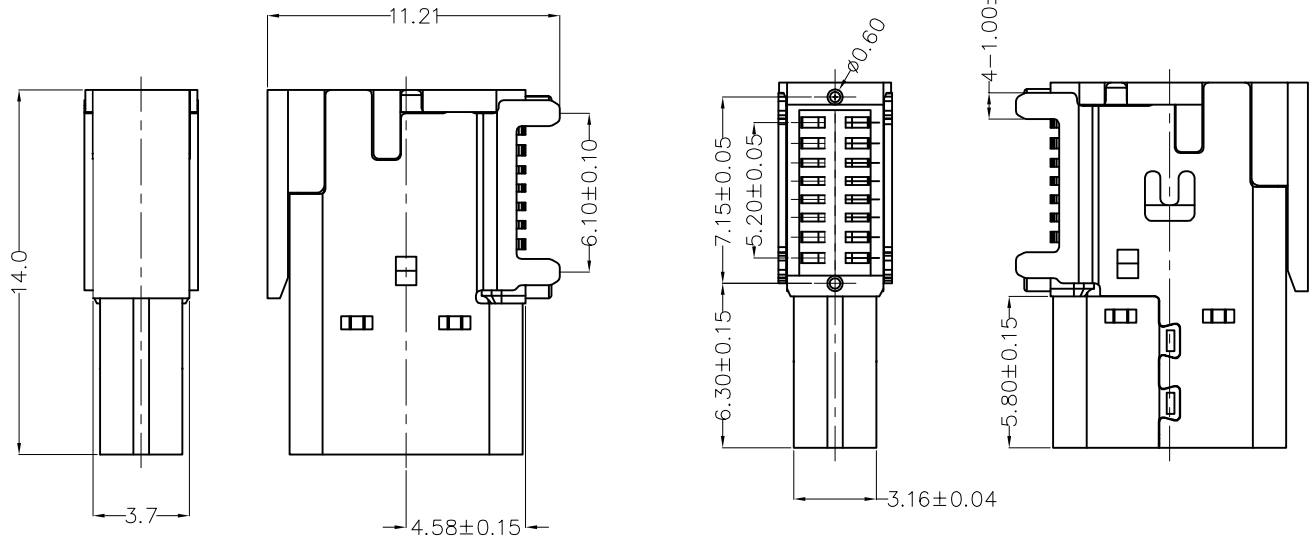


REV	LOCATIONS	DESCRIPTION	DATE	REVISER	APPD



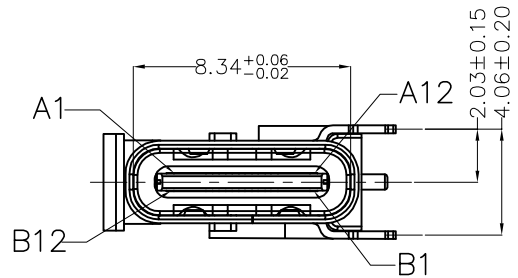
SPECIFICATIONS

Electrical
 Current Rating: 5A AC(rms)/DC
 Voltage Rating: 20V AC(rms)/DC
 Contact Resistance: 40mΩ Max
 Insulation Resistance: 100MΩ Min
 Withstanding Voltage: 150V AC r.m.s

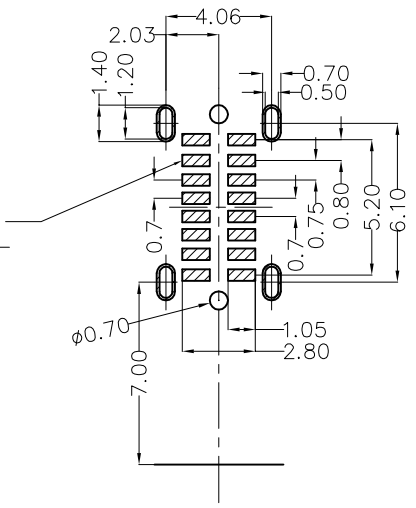
Mechanical
 Mating force: 0.5–2.0KG.F
 Retention force: 0.8–2.0KG.F
 Durability: 10000 cycles Min.

Environmental
 Operating Temperature: -55°C~+85°C

Material and plating
 Housing: LCP (UL 94V-0), Black
 Contacts: Copper Alloy/1μ"Gold plated on contact gold flash plated on tail
 Shell: Stainless steel/Nikel plated



[B12]	[A1]
[B9]	[A4]
[B8]	[A5]
[B7]	[A6]
[B6]	[A7]
[B5]	[A8]
[B4]	[A9]
[B1]	[A12]



Recommended P.C.Board Layout
 General tolerances ±0.05mm

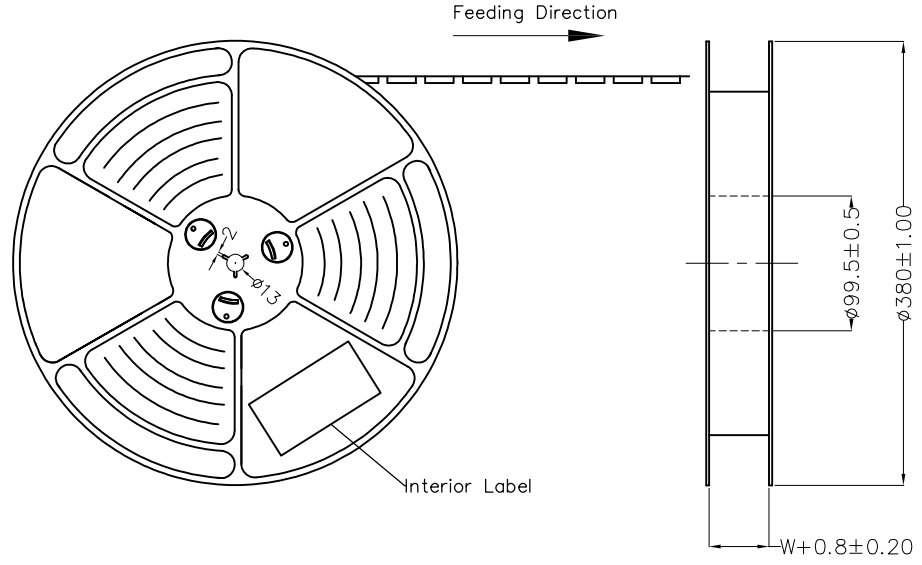
Circuits	A	Circuits	B
A1	GND	B12	GND
A2	/	B11	/
A3	/	B10	/
A4	VBUS	B9	VBUS
A5	CC1	B8	SBU2
A6	DP1	B7	DN2
A7	DN1	B6	DP2
A8	SBU1	B5	CC2
A9	VBUS	B4	VBUS
A10	/	B3	/
A11	/	B2	/
A12	GND	B1	GND

 THIRD ANGLE PROJECTION	GENERAL TOLERANCES (UNLESS SPECIFIED)		APPROVE BY	DATE	PART NO.	ITEM NO.	 Building Technology Cornerstone
	X. ±0.30	X.* ±5°	LEO	30/JAN/23	FUS6112-FSBBKM	FUS6112	
	X.X ±0.20	X.X* ±2°	CHECKED BY	DATE	TITLE		
	X.XX ±0.15	X.XX* ±1°	GISELLE	30/JAN/23	USB C-type 90° Angle Female(SMT)(3.1)		
SCALE	SIZE	X.XXX ±0.10	X.XXX* ±0.5°	DRAWN BY	DATE	THIS DRAWING CONTAINS INFORMATION THAT IS PROPRIETARY TO TXGA INDUSTRIAL ELECTRONICS(S.Z)CO.,LTD AND SHOULD NOT BE USED WITHOUT WRITTEN PERMISSION	
5:1	A4			MATT	30/JAN/23	REV 0	SHEET NO. 1/2

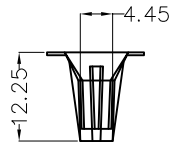
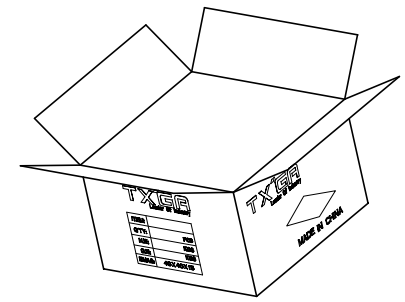
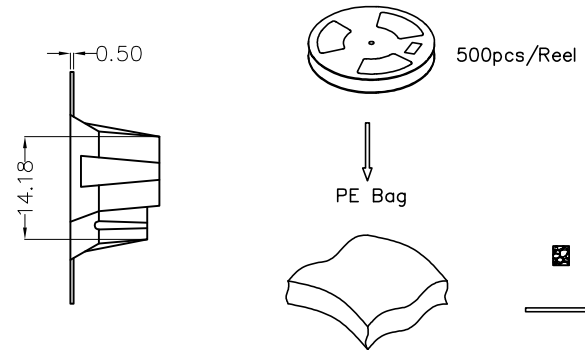
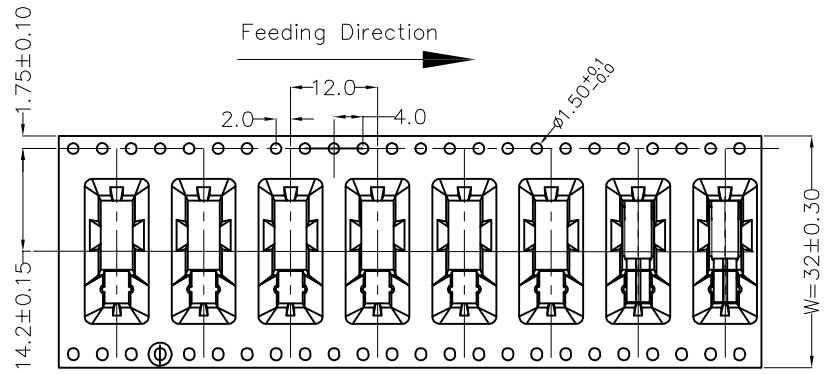
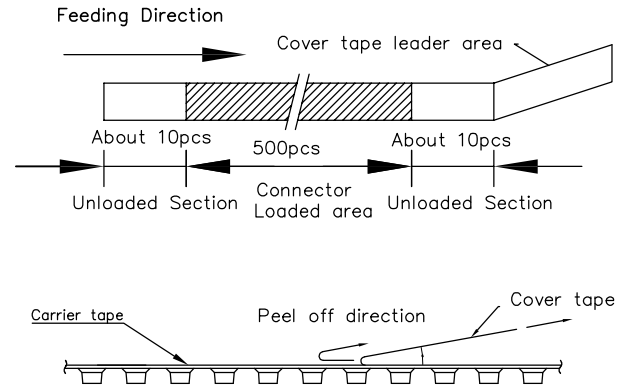
REV	LOCATIONS	DESCRIPTION	DATE	REVISER	APPD

A
B
C
D
E
F

A
B
C
D
E
F



- Note:
- 1.10 sprocket hole cumulative tolerance ± 0.2
 2. Carrier camber is within 1.0mm in 250mm
 3. Material: Clear conductive polystyrene Alloy 100% recyclable
 4. All dimensions meet EIA-481-3 requirements
 5. Peel off force of cover tape & carrier tape: 20g~130g (0.2N~1.3N)
 6. Component load per 15" reel: 250 pcs



 THIRD ANGLE PROJECTION	GENERAL TOLERANCES (UNLESS SPECIFIED)		APPROVE BY	DATE	PART NO.	ITEM NO.	 Building Technology Cornerstone
	X. ± 0.30	X.* $\pm 5^\circ$	LEO	30/JAN/23	FUS6112-FSBBKM	FUS6112	
	DESIGN UNITS	X.X ± 0.20	CHECKED BY	DATE	TITLE		
	METRIC(mm)	X.XX ± 0.15	GISELLE	30/JAN/23	USB C-type		
SCALE	SIZE	X.XXX ± 0.10	X.XX' $\pm 1^\circ$	DRAWN BY	DATE	90° Angle Female(SMT)(3.1)	
5:1	A4	X.XXX' $\pm 0.5^\circ$	X.XXX' $\pm 0.5^\circ$	MATT	30/JAN/23	REV 0	SHEET NO. 2/2
THIS DRAWING CONTAINS INFORMATION THAT IS PROPRIETARY TO TXGA INDUSTRIAL ELECTRONICS(S.Z)CO.,LTD AND SHOULD NOT BE USED WITHOUT WRITTEN PERMISSION							

1 2 3 4 5 6 7 8