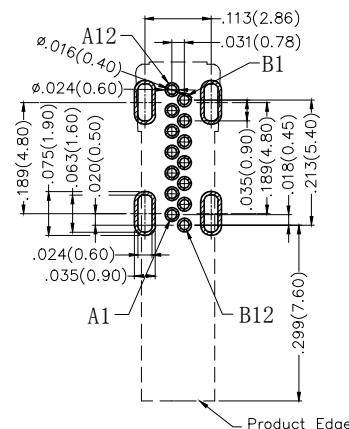
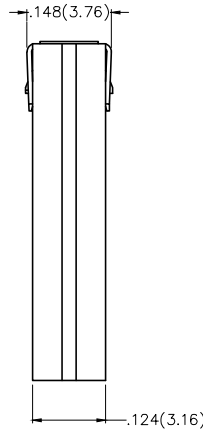


REV	LOCATIONS	DESCRIPTION	DATE	REVISER	APPD
1	△	Recommended P.C.Board Layout changes	11/MAY/21	KATE	CHERRY
2	△	Change .079(2.00) into .067(1.70)	21/OCT/21	KATE	CHERRY



Recommended P.C.Board Layout
General Tolerances: ±0.05mm



SPECIFICATIONS

Electrical

Current Rating: 5.0A AC(rms)/DC
Voltage Rating: 5V AC(rms)/DC
Contact Resistance: 40 mΩ Max
Withstanding Voltage: 100V AC r.m.s
Insulation Resistance: 100 MΩ Min
Temperature Range—Operating: -30°C~+85°C

Mechanical

Insertion Force: 5~20N
Withdrawal Force: 8~20N
Durability: 10,000 Cycles

Material and Plating

Housing: LCP (UL 94V-0) Black
Contact: Copper Alloy/ Gold Plated
Shell: Stainless Steel/ Nickel Plated

A

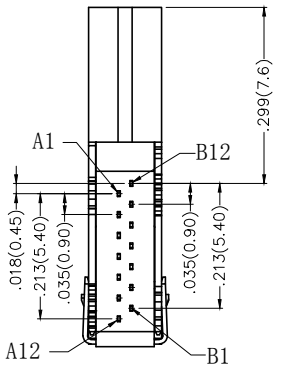
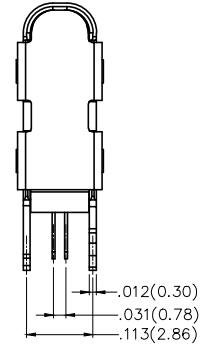
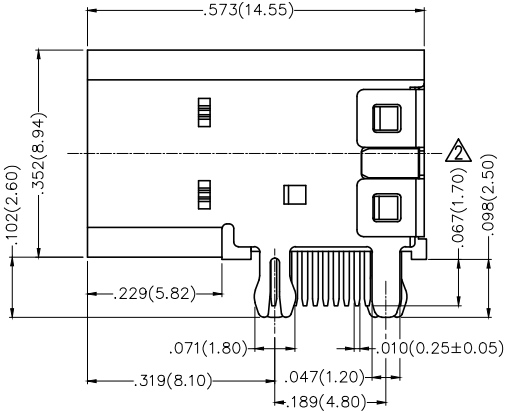
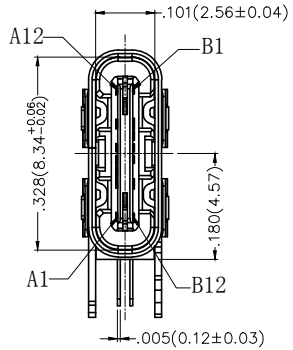
B

C

D

E

F



Circuits	A	Circuits	B
1	GND	12	GND
4	VBUS	9	VBUS
5	CC1	7	DN2
6	DP1	6	DP2
7	DN1	5	CC2
9	VBUS	4	VBUS
12	GND	1	GND

<p>THIRD ANGLE PROJECTION</p>	GENERAL TOLERANCES (UNLESS SPECIFIED)		APPROVE BY	DATE	PART NO.	ITEM NO.	<p>Leader Of Industry</p>	
	X.±.012(0.30)	X.±5°	FRANK	25/APR/17	FUS614-FDBK6M	FUS614		
	X.X±.008(0.20)	.X'±2°	CHECKED BY	DATE	TITLE			
DESIGN UNITS	X.XX±.006(0.15)	.XX'±1°	CHERRY	25/APR/17	USB C-type 90° Angle Female(DIP)(3.1)		REV 2	SHEET NO. 1/1
SCALE	X.XXX±.004(0.10)	.XXX'±0.5°	DRAWN BY	DATE	THIS DRAWING CONTAINS INFORMATION THAT IS PROPRIETARY TO TXGA INDUSTRIAL ELECTRONICS(S.Z)CO.,LTD AND SHOULD NOT BE USED WITHOUT WRITTEN PERMISSION			
5:1			LXF	25/APR/17				