

REV	LOCATIONS	DESCRIPTION	DATE	REVISER	APPD
1		New model, New drawing	16/MAR/26	MATT	LEO

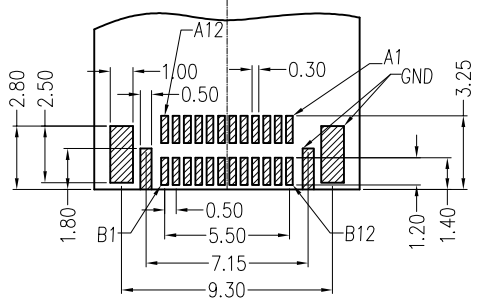
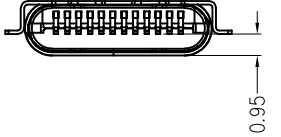
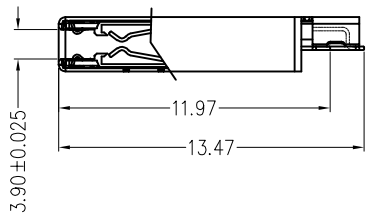
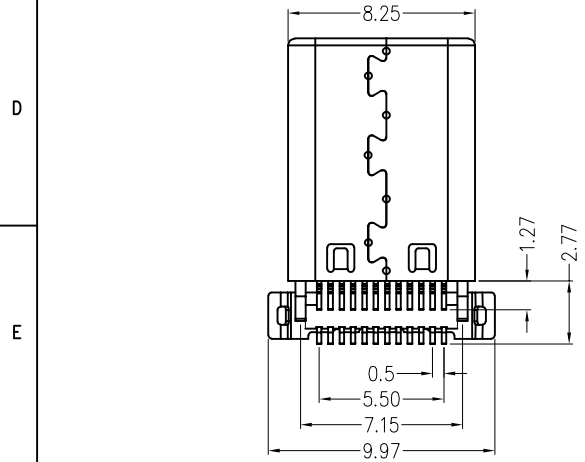
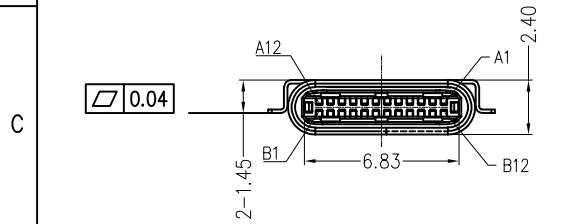
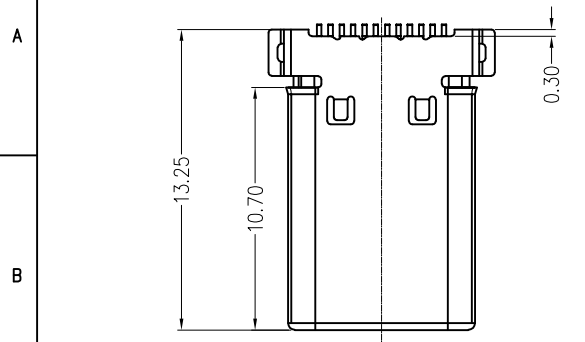
SPECIFICATIONS

Electrical
 Current Rating: 5A AC(rms)/DC (VBUS)
 0.9A AC(rms)/DC (OTHER)
 Voltage Rating: 100V AC(rms)/DC
 Contact Resistance: 40 mΩ Max
 Withstanding Voltage: 100V AC r.m.s
 Insulation Resistance: 100 MΩ Min
 Temperature Range-Operating: -40°C~+85°C

Mechanical
 Insertion Force: 5~20N(Initial)
 Withdrawal Force: 8~20N(Initial)
 Durability: 10,000 Cycles

Material and Plating
 Shell: Stainless Steel/Nickel Plated
 Latch: Stainless Steel/Nickel Plated
 Contact: Copper Alloy (C7025)/ Gold 0.025μm plated on contact area and matte tin plated on tails area
 Housing: LCP (UL 94V-0) Black

Circuits	A	Circuits	B
1	GND	12	GND
2	SSTXP1	11	SSRXP1
3	SSTXN1	10	SSRXN1
4	VBUS	9	VBUS
5	CC1	8	SBU2
6	DP1	7	DN2
7	DN1	6	DP2
8	SBU1	5	CC2
9	VBUS	4	VBUS
10	SSRXN2	3	SSTXN2
11	SSRXP2	2	SSTXP2
12	GND	1	GND

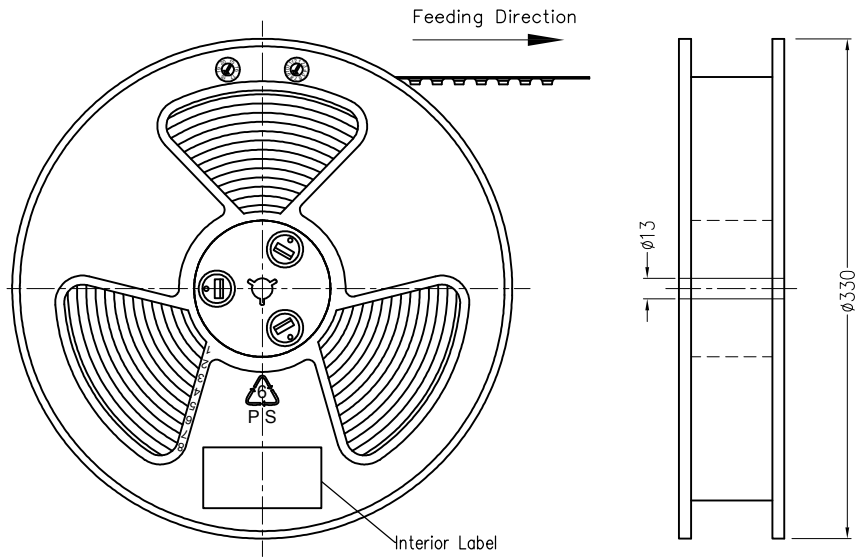


Recommended P.C.Board Layout
 General Tolerances: ±0.05mm

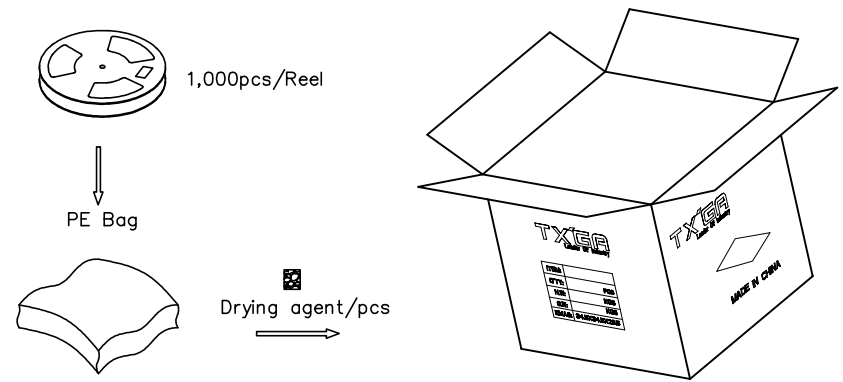
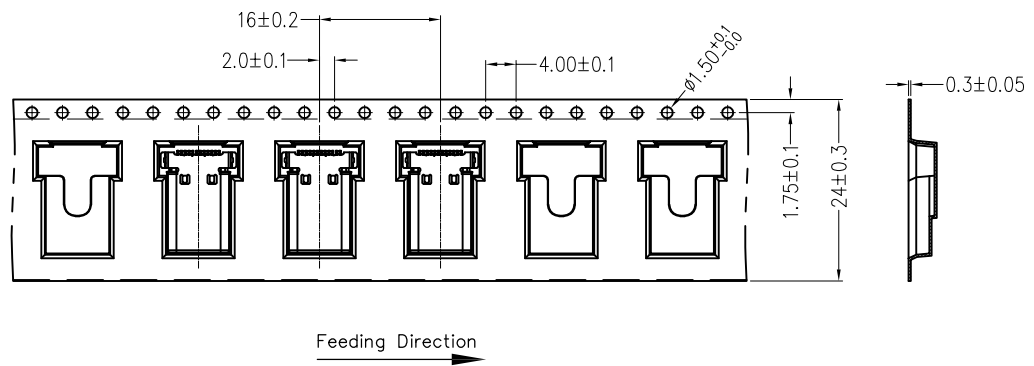
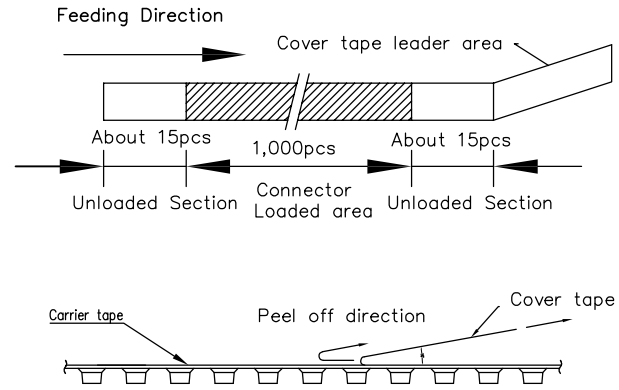
 THIRD ANGLE PROJECTION	GENERAL TOLERANCES (UNLESS SPECIFIED)		APPROVE BY	DATE	PART NO.	ITEM NO.	 Building Technology Cornerstone
	X.±0.50	X.±5'	FRANK	27/APR/17	FUS617-MSBK6M	FUS617	
	X.X±0.35	.X'±2'	CHECKED BY	DATE	TITLE		
	X.XX±0.25	.XX'±1'	CHERRY	27/APR/17	USB C-type 90° Angle Male(SMT)(3.1)		
SCALE	SIZE	X.XXX±0.15	.XXX'±0.5'	DRAWN BY	DATE	THIS DRAWING CONTAINS INFORMATION THAT IS PROPRIETARY TO TXGA INDUSTRIAL ELECTRONICS(S.Z)CO.,LTD AND SHOULD NOT BE USED WITHOUT WRITTEN PERMISSION	
3:1	A4			LXF	27/APR/17	REV 1	SHEET NO. 1/2

REV	LOCATIONS	DESCRIPTION	DATE	REVISER	APPD

A
B
C
D
E
F



- Note:
- 1.10 sprocket hole cumulative tolerance±0.2
 - 2.Carrier camber is within 1.0mm in 250mm
 - 3.Material: Clear conductive polystyrene Alloy 100% recyclable
 - 4.All dimensions meet EIA-481-3 requirements
 - 5.Peel off force of cover tape & carrier tape: 20g~130g (0.2N~1.3N)
 - 6.Component load per 13" reel: 1,000 pcs



<p>THIRD ANGLE PROJECTION</p>	GENERAL TOLERANCES (UNLESS SPECIFIED)		APPROVE BY	DATE	PART NO.	ITEM NO.	<p>Building Technology Cornerstone</p>	
	X.±0.50	X.±5'	FRANK	27/APR/17	FUS617-MSBK6M	FUS617		
	DESIGN UNITS Metric(mm)		CHECKED BY	DATE	TITLE		REV 1	SHEET NO. 2/2
	X.X±0.35	.X'±2'	CHERRY	27/APR/17	USB C-type 90° Angle Male(SMT)(3.1)		THIS DRAWING CONTAINS INFORMATION THAT IS PROPRIETARY TO TXGA INDUSTRIAL ELECTRONICS(S.Z)CO.,LTD AND SHOULD NOT BE USED WITHOUT WRITTEN PERMISSION	
SCALE 3:1	SIZE A4	X.XX±0.25	.XX'±1'	DRAWN BY	DATE			
		X.XXX±0.15	.XXX'±0.5'	LXF	27/APR/17			

1 2 3 4 5 6 7 8