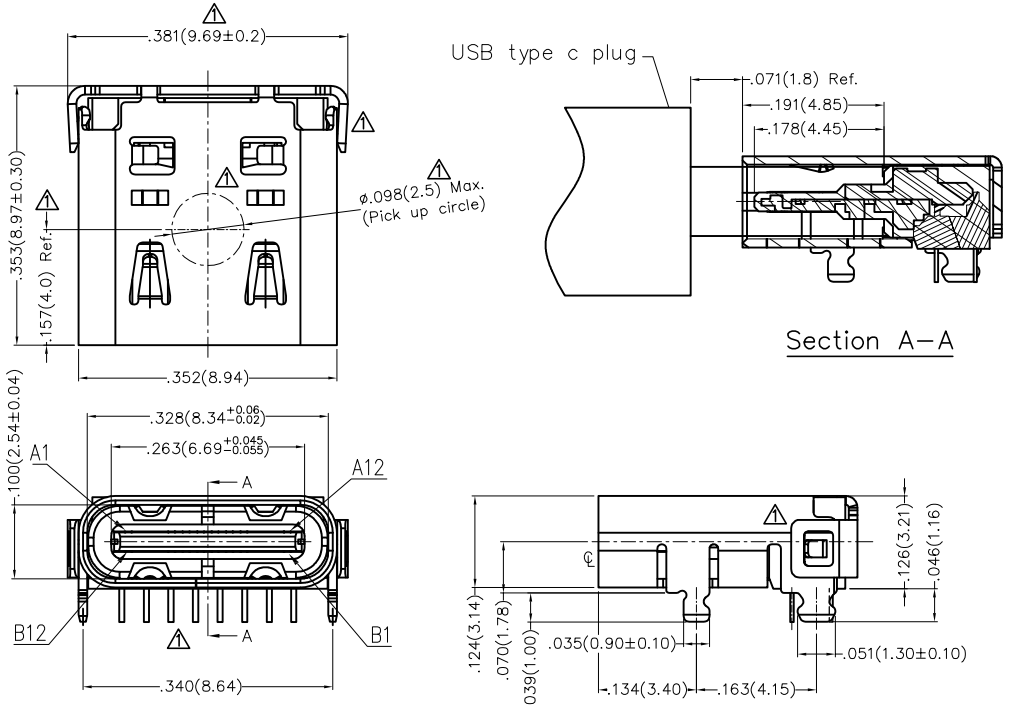


1 2 3 4 5 6 7 8

| REV | LOCATIONS | DESCRIPTION | DATE | REVISER | APPD |
|-----|-----------|--------------------------------------|-----------|---------|------|
| 1 | △ | 1. Structure Changes 2. Size changes | 08/MAR/25 | MATT | LEO |

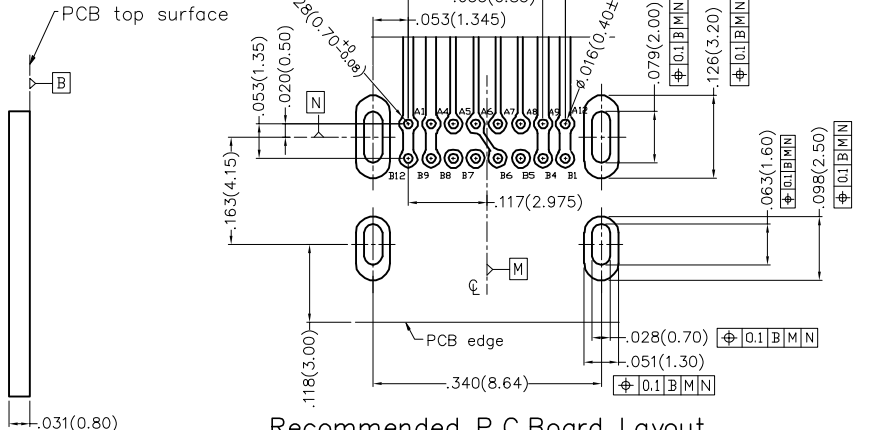
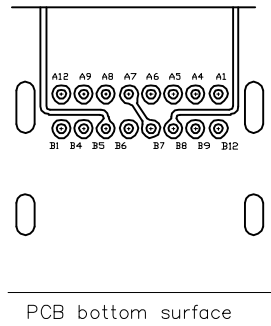
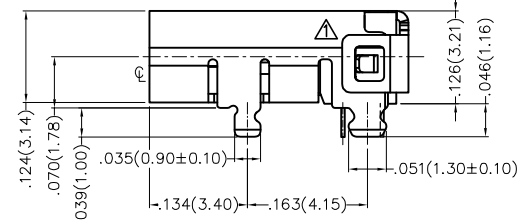
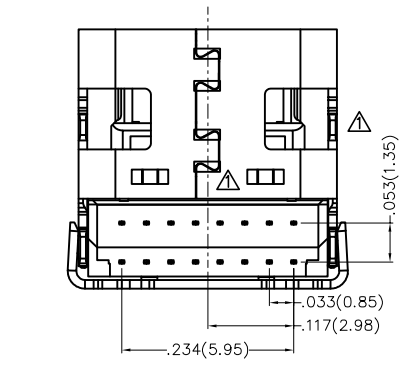


SPECIFICATIONS

Electrical
 Current Rating: 5A AC(rms)/DC (VBUS)
 1.25A AC(rms)/DC (Others)
 Voltage Rating: 20V AC(rms)/DC
 Contact Resistance: 50 mΩ Max
 Withstanding Voltage: 100V AC r.m.s
 Insulation Resistance: 100 MΩ Min
 Temperature Range-Operating: -30°C~+85°C

Mechanical
 Insertion Force: 5~20N
 Withdrawal Force: 8~20N(0~1,000 cycles)
 5~20N(1,000~10,000 cycles)
 Durability: 10,000 cycles

Material and Plating
 Housing: LCP (UL 94V-0) Black
 Terminal: Copper alloy/ Gold plated
 Shell: Stainless steel/ Nickel plated



Recommended P.C.Board Layout
 General Tolerances: ±0.05mm

| Circuits | A | Circuits | B |
|----------|------|----------|------|
| A1 | GND | B12 | GND |
| A4 | VBUS | B9 | VBUS |
| A5 | CC1 | B8 | SBU2 |
| A6 | DP1 | B7 | DN2 |
| A7 | DN1 | B6 | DP2 |
| A8 | SBU1 | B5 | CC2 |
| A9 | VBUS | B4 | VBUS |
| A12 | GND | B1 | GND |

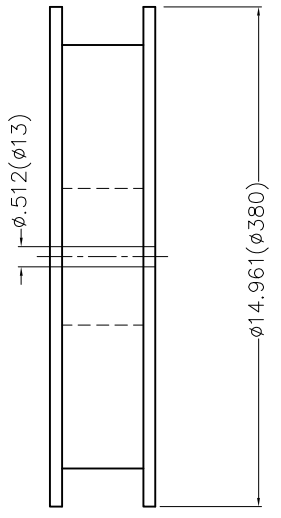
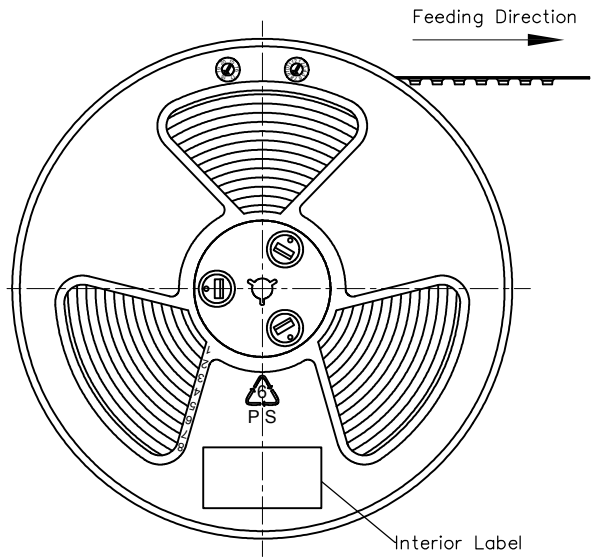
| THIRD ANGLE PROJECTION | | GENERAL TOLERANCES (UNLESS SPECIFIED) | | APPROVE BY | DATE | PART NO. | ITEM NO. | TXGA Building Technology Cornerstone |
|------------------------|------|---------------------------------------|------------|------------|-----------|----------------------------------------------------------------------------------------------------------------------------------------------------|----------|-----------------------------------------|
| DESIGN UNITS | | X.±.012(0.30) | X.±5' | FRANK | 06/MAR/18 | FUS621-FDBK6M | FUS621 | |
| Inch (metric) | | X.X±.008(0.20) | .X'±2" | CHECKED BY | DATE | TITLE USB C-type 16 Circuits 90° Angle Female(DIP) | | |
| SCALE | SIZE | X.XX±.006(0.15) | .XX'±1" | DRAWN BY | DATE | THIS DRAWING CONTAINS INFORMATION THAT IS PROPRIETARY TO TXGA INDUSTRIAL ELECTRONICS(S.Z)CO.,LTD AND SHOULD NOT BE USED WITHOUT WRITTEN PERMISSION | | |
| 5:1 | A4 | X.XXX±.004(0.10) | .XXX'±0.5' | KATE | 06/MAR/18 | | | |

1 2 3 4 5 6 7 8

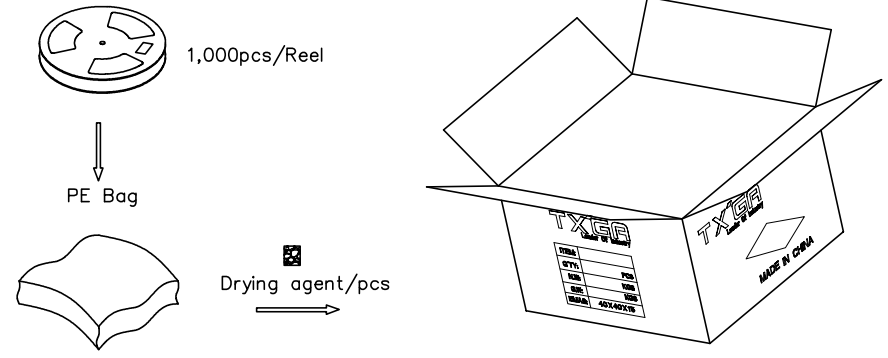
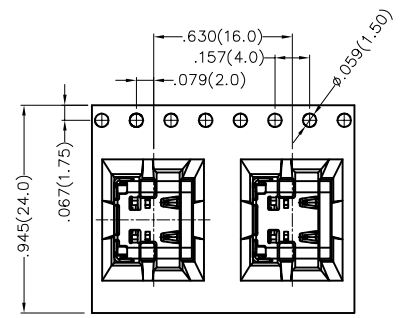
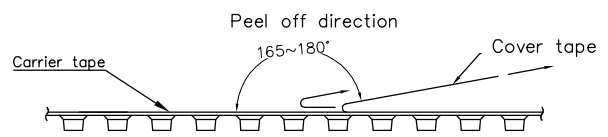
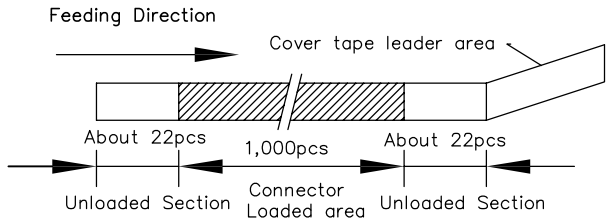
A B C D E F

A B C D E F

| REV | LOCATIONS | DESCRIPTION | DATE | REVISER | APPD |
|-----|-----------|-------------|------|---------|------|
| | | | | | |



- Note:
- 1.10 sprocket hole cumulative tolerance ± 0.2
 2. Carrier camber is within 1.0mm in 250mm
 3. Material: Clear conductive polystyrene Alloy 100% recyclable
 4. All dimensions meet EIA-481-3 requirements
 5. Peel off force of cover tape & carrier tape: 20g~130g (0.2N~1.3N)
 6. Component load per 15" reel: 1,000 pcs



| | | | | | | | |
|-------------------------------|---------------------------------------|------------|------------|-----------|----------------------------------------------------------------------------------------------------------------------------------------------------|----------|-------------------------------------|
| THIRD ANGLE PROJECTION | GENERAL TOLERANCES (UNLESS SPECIFIED) | | APPROVE BY | DATE | PART NO. | ITEM NO. | Building Technology Cornerstone |
| | X.±.012(0.30) | X.±5' | FRANK | 08/MAR/25 | FUS621-FDBK6M | FUS621 | |
| DESIGN UNITS Inch (metric) | X.X±.008(0.20) | .X'±2" | CHECKED BY | DATE | TITLE | | REV 1 |
| SCALE | X.XX±.006(0.15) | .XX'±1" | CHERRY | 08/MAR/25 | USB C-type 16 Circuits 90° Angle Female(DIP) | | SHEET NO. 2/2 |
| 5:1 | X.XXX±.004(0.10) | .XXX'±0.5" | DRAWN BY | DATE | THIS DRAWING CONTAINS INFORMATION THAT IS PROPRIETARY TO TXGA INDUSTRIAL ELECTRONICS(S.Z)CO.,LTD AND SHOULD NOT BE USED WITHOUT WRITTEN PERMISSION | | |
| SIZE A4 | MATT | | | 08/MAR/25 | | | |