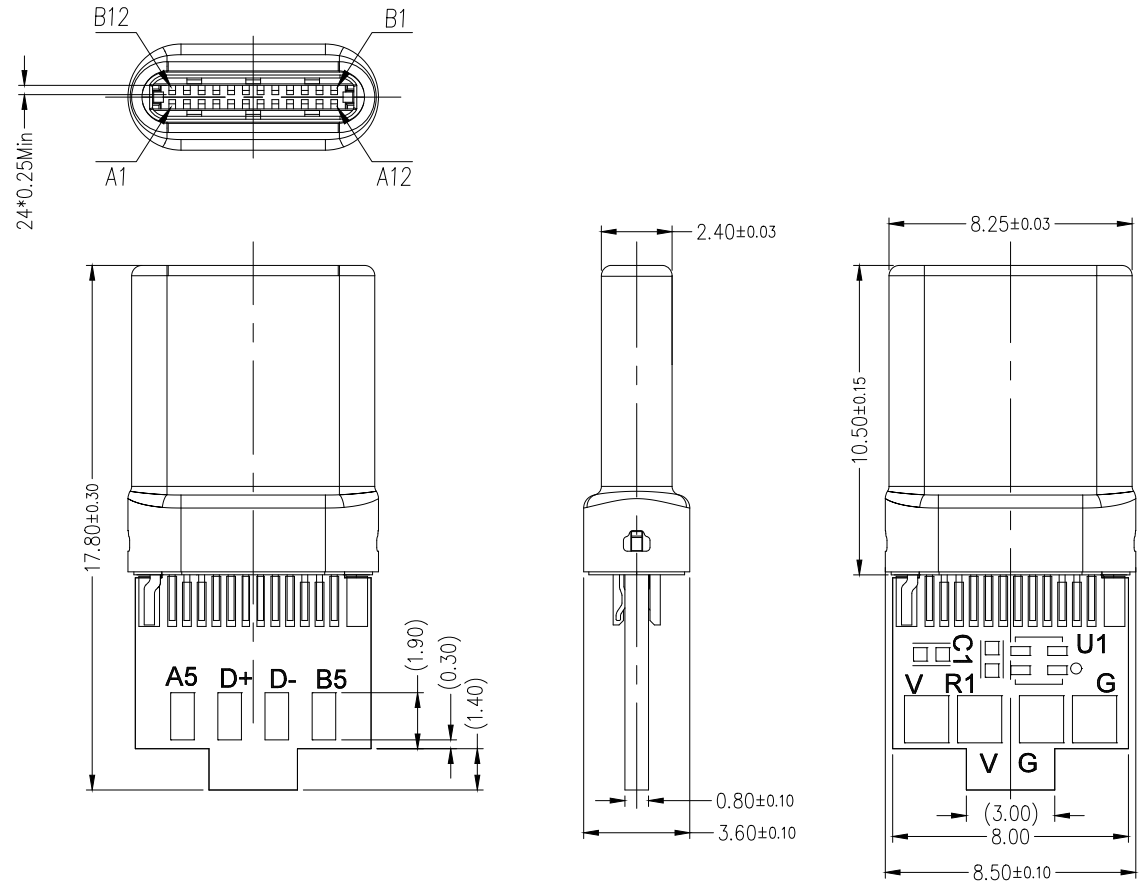


REV	LOCATIONS	DESCRIPTION	DATE	REVISER	APPD



SPECIFICATION:

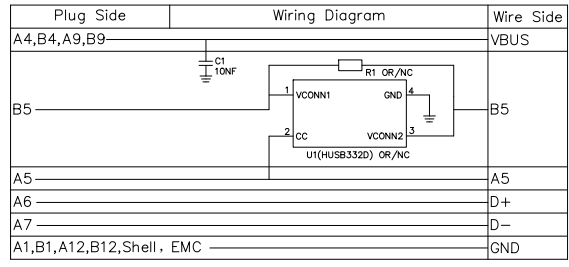
Electrical:
 Current Rating: 5A Max. for VBus;
 Voltage Rating: 48V Max;
 Dielectric Withstanding voltage: 100V AC;
 Contact resistance: 40 mΩ Max.;
 Insulation Resistance: 100 MΩ Min.;

Environmental:
 Operating temperature: -40°C~+85°C;
 Salt Spray Test: 48H Min.;
 Wetting Temperature: 265±5°C, 5±0.5s

Mechanical:
 Mating force: 5-20N;
 Unmating force: Initial: 8-20N; Final: 6-20N;
 Durability: 10000 Cycles;
 Shell withdrawal force: 8Kgf Min. (Jointing Force);

Material:
 Housing: LCP (UL94-V0), Black
 Shell: SUS, Ni Plated
 Molding: LCP (UL94-V0), White
 Terminal: Copper Alloy, Gold Plated 3μ", Solder Area: Tin Plated
 Latch: SUS, Nickel Underplate, Solder Tail Area Matte Tin
 EMI Spring: SUS
 PCB: FR4, 4-Layer, T=0.8mm, Double-sided tinning
 C1: 10nF/100V, ±10%, SMD 0402
 R1: 0Ω, 50mΩ MAX, 1/16W, SMD 0402
 U1: HUSB332D_U31DH

Circuits	A	B	Circuits
A1	GND	GND	B12
A2	-	-	B11
A3	-	-	B10
A4	VBUS	VBUS	B9
A5	CC1	-	B8
A6	DP1	-	B7
A7	DN1	-	B6
A8	-	Vconn	B5
A9	VBUS	VBUS	B4
A10	-	-	B3
A11	-	-	B2
A12	GND	GND	B1



Configuration Type	Part NO.	U1 Component	R1 Component	C1 Component
A	FUS6219-MWSWHKA	NC	with	with
B	FUS6219-MWSWHKB	with	NC	with

<p>THIRD ANGLE PROJECTION</p>	GENERAL TOLERANCES (UNLESS SPECIFIED)		APPROVE BY	DATE	PART NO.	ITEM NO.	<p>Building Technology Cornerstone</p>	
	X. ±0.30	X.* ±5'	LEO	28/OCT/21	FUS6219-MWSWHXX	FUS6219		
	DESIGN UNITS	X.X ±0.20	X.X' ±2'	CHECKED BY	DATE	TITLE		
	mm	X.XX ±0.15	X.XX' ±1'	GISELLE	28/OCT/21	USB C-type 180° Vertical Male(Welding)		
SCALE	SIZE	X.XXX ±0.10	X.XXX' ±0.5'	DRAWN BY	DATE	THIS DRAWING CONTAINS INFORMATION THAT IS PROPRIETARY TO TXGA INDUSTRIAL ELECTRONICS(S.Z)CO.,LTD AND SHOULD NOT BE USED WITHOUT WRITTEN PERMISSION		
5:1	A4			PYD	28/OCT/21	REV 0	SHEET NO. 1/1	