

REV	LOCATIONS	DESCRIPTION	DATE	REVISER	APPD

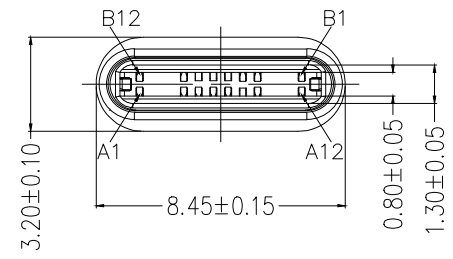
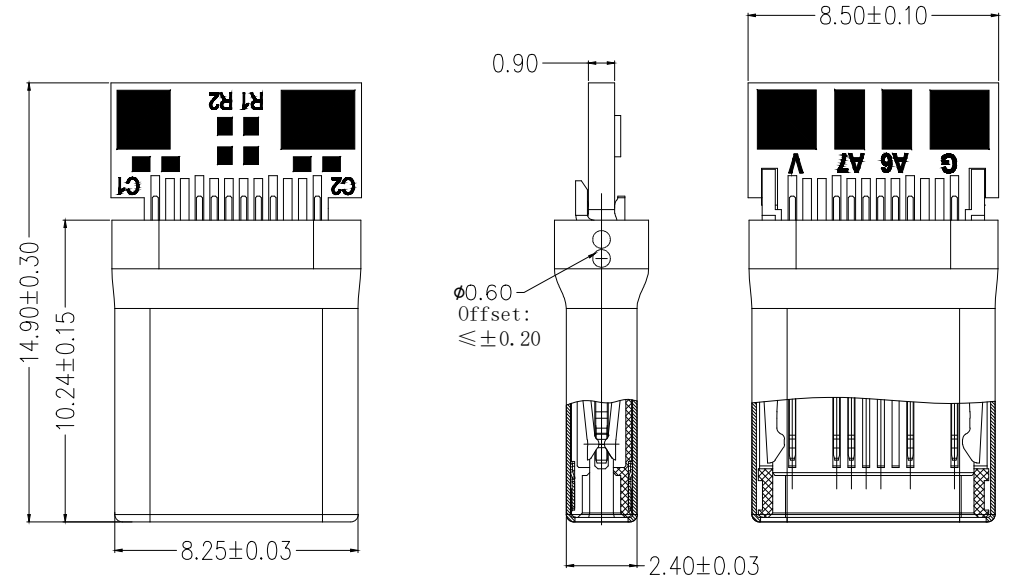
SPECIFICATION:

Electrical:
 Current Rating: 5A Max. for VBus;
 Voltage Rating: 20V Max;
 Dielectric Withstanding volage: 100V AC;
 Contact resistance: 40 mΩ Max.;;
 Insulation Resistance: 100 MΩ Min.;

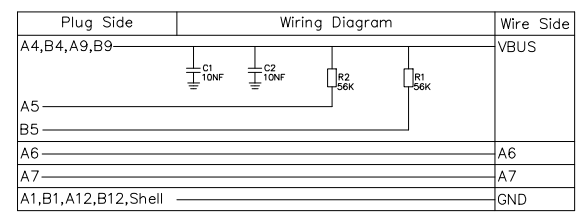
Environmental:
 Operating temperature: -40°C~+85°C;
 Salt Spray Test: 24H Min.;;
 Wetting Temperature: 265±5°C, 5±0.5s

Mechanical:
 Mating force: 5-20N;
 Unmating force: Initial: 8-20N; Final: 6-20N;
 Durability: 10000 Cycles;
 Shell withdrawal force: 50N Min. (Joining Force);

Material:
 Housing: LCP (UL94-V0), Black
 Shell: SUS316L, NI Plated
 Terminal: Copper Alloy, Gold Plated 1μ"
 Latch: SUS301, Nickel Underplate, Solder Tail Area Matte Tin
 PCB: 4-Layer, T=0.9mm
 R1/R2: 56K±5%
 C1/C2: 10NF±20%



Circuits	A	B	Circuits
A1	GND	GND	B12
A4	VBUS	VBUS	B9
A5	CC	-	B8
A6	DP1	-	B7
A7	DN1	-	B6
A8	-	Vconn	B5
A9	VBUS	VBUS	B4
A12	GND	GND	B1



<p>THIRD ANGLE PROJECTION</p>	GENERAL TOLERANCES (UNLESS SPECIFIED)		APPROVE BY	DATE	PART NO.	ITEM NO.	<p>Building Technology Cornerstone</p>	
	X. ±0.30	X.* ±5'	LEO	28/OCT/21	FUS6221-MWSBKB	FUS6221		
	DESIGN UNITS	X.X ±0.20	X.X' ±2'	CHECKED BY	DATE	TITLE		REV 0
	mm	X.XX ±0.15	X.XX' ±1'	GISELLE	28/OCT/21	USB C-type 180° Vertical Male(Welding)		
SCALE	SIZE	X.XXX ±0.10	X.XXX' ±0.5'	DRAWN BY	DATE	THIS DRAWING CONTAINS INFORMATION THAT IS PROPRIETARY TO TXGA INDUSTRIAL ELECTRONICS(S.Z)CO.,LTD AND SHOULD NOT BE USED WITHOUT WRITTEN PERMISSION		
5:1	A4			PYD	28/OCT/21			