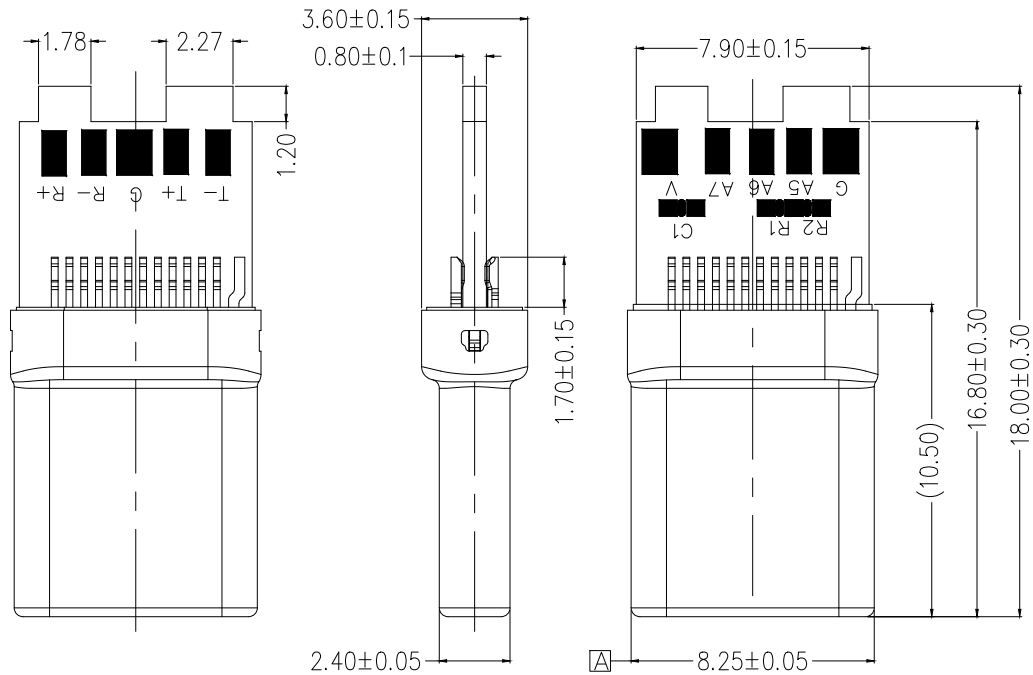


REV	LOCATIONS	DESCRIPTION	DATE	REVISER	APPD



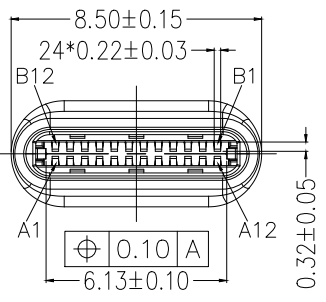
SPECIFICATION:

Electrical:
 Current Rating: 5A Max. for VBus;
 Voltage Rating: 20V Max.;
 Dielectric Withstanding voltage: 100V AC;
 Contact resistance: 40 mΩ Max.;
 Insulation Resistance: 100 MΩ Min.;

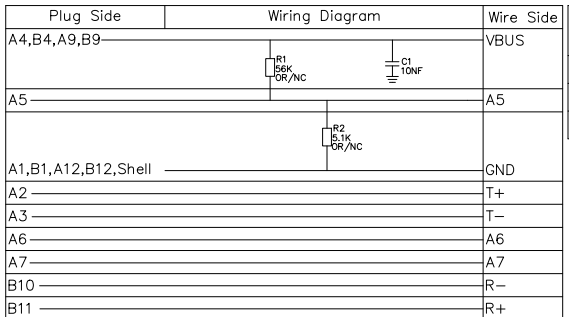
Environmental:
 Operating temperature: -40°C~+85°C;
 Salt Spray Test: 48H Min.;
 Wetting Temperature: 265±5°C, 5±0.5s

Mechanical:
 Mating force: 5-20N;
 Unmating force: Initial: 8-20N; Final: 6-20N;
 Durability: 10000 Cycles;
 Shell withdrawal force: 50N MIN. (Jointing Force);

Material:
 Housing: LCP (UL94-V0), Black
 Shell: SUS316L, NI Plated
 Terminal: Copper Alloy, Gold Plated 1μ"
 Latch: SUS301, Nickel Underplate 50μ", Solder Tail
 Area Matte Tin 80μ"
 Ground Bar: SUS201, T=0.1mm
 PCB: T=0.8mm, Double-sided tinning
 C1: 10NF
 R1: 56K
 R2: 5.1K



Circuits	A	B	Circuits
A1	GND	GND	B12
A2	SSTXp1	SSRXp1	B11
A3	SSTXn1	SSRXn1	B10
A4	VBUS	VBUS	B9
A5	CC1	-	B8
A6	DP1	-	B7
A7	DN1	-	B6
A8	-	-	B5
A9	VBUS	VBUS	B4
A10	-	-	B3
A11	-	-	B2
A12	GND	GND	B1



Configuration Type	Part NO.	R1 Component	R2 Component	C1 Component
A	FUS6225-MWSBKBA	NC	NC	with
B	FUS6225-MWSBKBB	with	NC	with
C	FUS6225-MWSBKBC	NC	with	with

 THIRD ANGLE PROJECTION	GENERAL TOLERANCES (UNLESS SPECIFIED)		APPROVE BY	DATE	PART NO.	ITEM NO.	 Building Technology Cornerstone
	X. ±0.30	X.* ±5'	LEO	28/OCT/21	FUS6225-MWSBKBX	FUS6225	
	X.X ±0.20	X.X' ±2'	CHECKED BY	DATE	TITLE USB C-type 180° Vertical Male(Welding)		
	X.XX ±0.15	X.XX' ±1'	GISELLE	28/OCT/21	REV 0	SHEET NO. 1/1	
DESIGN UNITS mm	X.XXX ±0.10	X.XXX' ±0.5'	DRAWN BY	DATE	THIS DRAWING CONTAINS INFORMATION THAT IS PROPRIETARY TO TXGA INDUSTRIAL ELECTRONICS(S.Z)CO.,LTD AND SHOULD NOT BE USED WITHOUT WRITTEN PERMISSION		
SCALE 5:1	SIZE A4		PYD	28/OCT/21			