

1 2 3 4 5 6 7 8

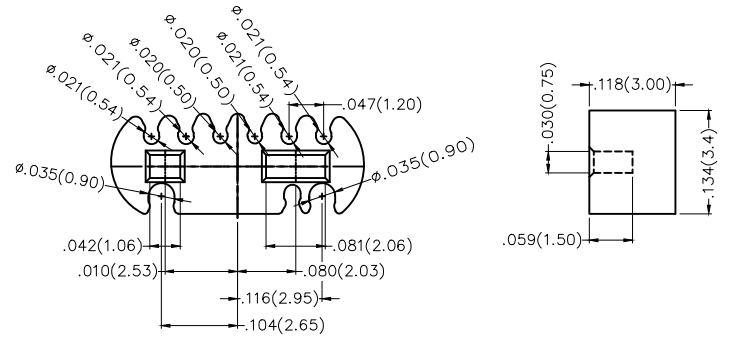
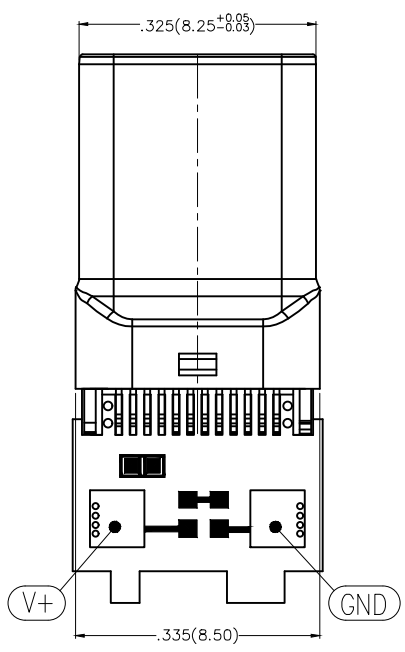
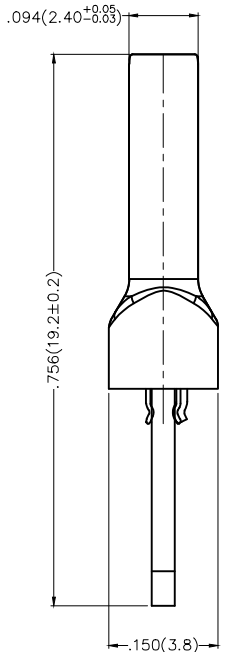
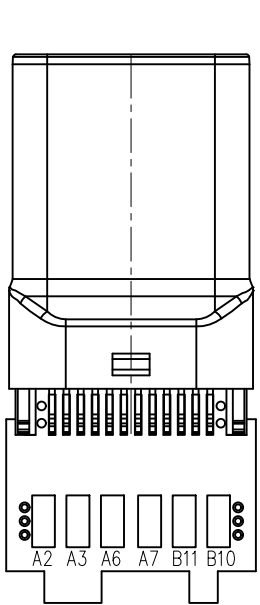
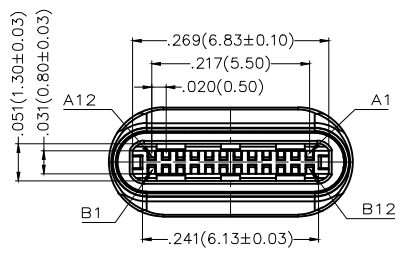
REV	LOCATIONS	DESCRIPTION	DATE	REVISER	APPD

**SPECIFICATIONS**

**Electrical**  
 Current Rating: 3A AC(rms)/DC  
 Voltage Rating: 20V AC(rms)/DC  
 Contact Resistance: 30 mΩ Max  
 Withstanding Voltage: 100V AC r.m.s  
 Insulation Resistance: 100 MΩ Min  
 Temperature Range-Operating: -30°C~+85°C

**Mechanical**  
 Insertion Force: 5~20N  
 Withdrawal Force: 8~20N  
 Durability: 10,000 cycles

**Material and Plating**  
 Housing: Thermoplastic (UL 94V-0) Black  
 Terminal: Copper alloy/ 1μ" Gold plated in contact area, tin on tail  
 Shell: Stainless steel/ Nickel plated  
 Wire holder: PA66 (UL 94V-0) Black  
 Wire holder applicable wire: 32+26AWG



A  
B  
C  
D  
E  
F

A  
B  
C  
D  
E  
F

<p>THIRD ANGLE PROJECTION</p>	GENERAL TOLERANCES (UNLESS SPECIFIED)		APPROVE BY FRANK	DATE 06/JUL/18	PART NO. FUS623-MWSK6LX	ITEM NO. FUS623	<p>Leader Of Industry</p>	
	DESIGN UNITS Inch (metric)	X.±.012(0.30) X.X±.008(0.20) X.XX±.006(0.15) X.XXX±.004(0.10)	X.±5° .X'±2° .XX'±1° .XXX'±0.5°	CHECKED BY CHERRY	DATE 06/JUL/18	TITLE USB C-type 180°Vertical Male(Welding)(3.1)		REV 0
SCALE 5:1	SIZE A4	DRAWN BY KATE		DATE 06/JUL/18	THIS DRAWING CONTAINS INFORMATION THAT IS PROPRIETARY TO TXGA INDUSTRIAL ELECTRONICS(S.Z)CO.,LTD AND SHOULD NOT BE USED WITHOUT WRITTEN PERMISSION			

1 2 3 4 5 6 7 8

REV	LOCATIONS	DESCRIPTION	DATE	REVISER	APPD

SCHEMATIC

FUS623-MWSK6LA Type-C 3.0 Charging data - 1A Resistance: 56K

SCHEMATIC	
PLUG	P.C.Board
A1,A12,B1,B12,Shell	GND
A4,A9,B4,B9	VBUS
A5	
A6	Dp1
A7	Dn1
A2	TX1+
A3	TX1-
B10	RX1-
B11	RX1+

Capacitance 10nF (VBUS & GND)  
Resistance 56K (VBUS & CC)

FUS623-MWSK6LC Type-C 3.0 Charging data - 3A Resistance: 10K

SCHEMATIC	
PLUG	P.C.Board
A1,A12,B1,B12,Shell	GND
A4,A9,B4,B9	VBUS
A5	
A6	Dp1
A7	Dn1
A2	TX1+
A3	TX1-
B10	RX1-
B11	RX1+

Capacitance 10nF (VBUS & GND)  
Resistance 10K (VBUS & CC)

FUS623-MWSK6LB Type-C 3.0 Charging data - 1.5A Resistance: 22K

SCHEMATIC	
PLUG	P.C.Board
A1,A12,B1,B12,Shell	GND
A4,A9,B4,B9	VBUS
A5	
A6	Dp1
A7	Dn1
A2	TX1+
A3	TX1-
B10	RX1-
B11	RX1+

Capacitance 10nF (VBUS & GND)  
Resistance 22K (VBUS & CC)

FUS623-MWSK6LD Type-C 3.0 OTG - Resistance: 5.1K

SCHEMATIC	
PLUG	P.C.Board
A4,A9,B4,B9	VBUS
A1,A12,B1,B12,Shell	GND
A5	
A6	Dp1
A7	Dn1
A2	TX1+
A3	TX1-
B10	RX1-
B11	RX1+

Capacitance 10nF (VBUS & GND)  
Resistance 5.1K (GND & CC)

<p>THIRD ANGLE PROJECTION</p>	GENERAL TOLERANCES (UNLESS SPECIFIED)		APPROVE BY	DATE	PART NO.	ITEM NO.	
	X.±.012(0.30)	X.±5'	FRANK	06/JUL/18	FUS623-MWSK6LX	FUS623	
	X.X±.008(0.20)	.X'±2'	CHECKED BY	DATE	TITLE		
	X.XX±.006(0.15)	.XX'±1'	CHERRY	06/JUL/18	USB C-type 180°Vertical Male(Welding)(3.1)		
SCALE	SIZE	X.XXX±.004(0.10)	.XXX'±0.5'	DRAWN BY	DATE	REV 0	SHEET NO. 2/2
5:1	A4			KATE	06/JUL/18	THIS DRAWING CONTAINS INFORMATION THAT IS PROPRIETARY TO TXGA INDUSTRIAL ELECTRONICS(S.Z)CO.,LTD AND SHOULD NOT BE USED WITHOUT WRITTEN PERMISSION	

