

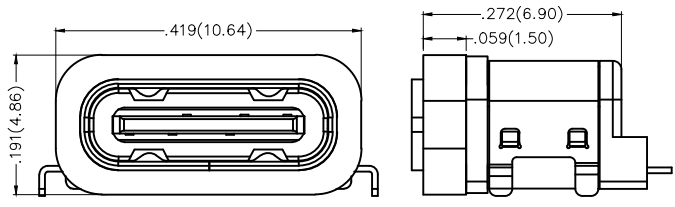
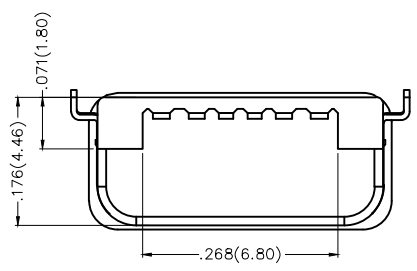
REV	LOCATIONS	DESCRIPTION	DATE	REVISER	APPD

SPECIFICATIONS

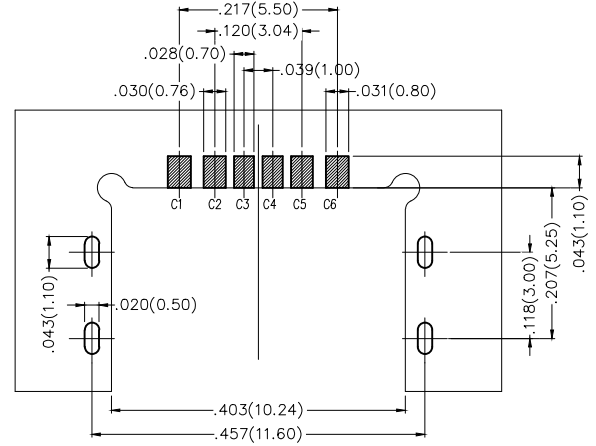
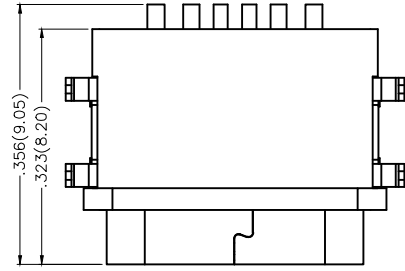
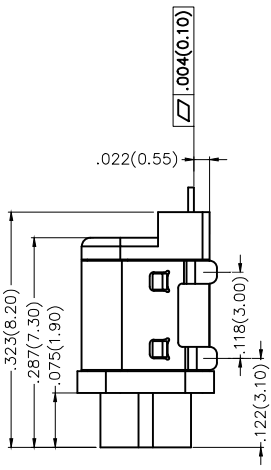
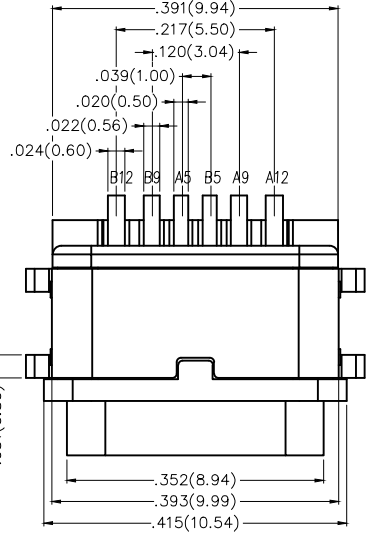
Electrical
 Current Rating: 3A AC(rms)/DC
 Voltage Rating: 20V AC(rms)/DC
 Contact Resistance: 40 mΩ Max
 Withstanding Voltage: 100V AC r.m.s
 Insulation Resistance: 100 MΩ Min/DC 250V
 Temperature Range-Operating: -30°C~+85°C

Mechanical
 Insertion Force: 5~20N
 Withdrawal Force: 8~20N
 Durability: 10,000 cycles

Material and Plating
 Housing: Thermoplastic (UL 94V-0) Black
 Terminal: Copper alloy/ Gold plated in contact area, tin on tail
 Shielding plate: Stainless steel/ Nickel plated
 Shell: Stainless steel/ Nickel plated
 Waterproof ring: silica gel, Black
 Ingress protection rating: IPX7

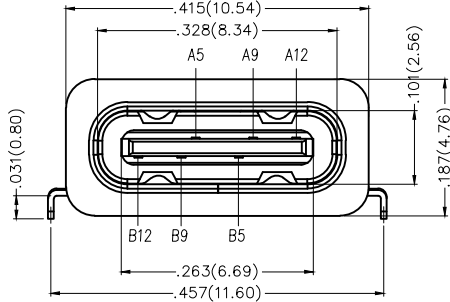


After adding waterproof ring



Recommended P.C.Board Layout
 General Tolerances: ±.002(0.05)

Circuits	A1&B12	A4&B9	A5	B5	A9&B4	A12&B1
signal name	GND	VBUS	CC1	CC2	VBUS	GND
P.C.B pad No.	C1	C2	C3	C4	C5	C6



 THIRD ANGLE PROJECTION	GENERAL TOLERANCES (UNLESS SPECIFIED)		APPROVE BY	DATE	PART NO.	ITEM NO.	 Leader Of Industry
	X.±.012(0.30)	X.±5'	FRANK	09/JUN/18	FUS626-FSBK6M	FUS626	
	X.X±.008(0.20)	X.±2'	CHECKED BY	DATE	TITLE		REV 0
	X.XX±.006(0.15)	.XX±1'	CHERRY	09/JUN/18	USB C-type 90° Angle Female(SMT)(3.1)		SHEET NO. 1/1
SCALE	SIZE	X.XXX±.004(0.10)	.XXX±0.5'	DRAWN BY	DATE	THIS DRAWING CONTAINS INFORMATION THAT IS PROPRIETARY TO TXGA INDUSTRIAL ELECTRONICS(S.Z)CO.,LTD AND SHOULD NOT BE USED WITHOUT WRITTEN PERMISSION	
5:1	A4	KATE	09/JUN/18				