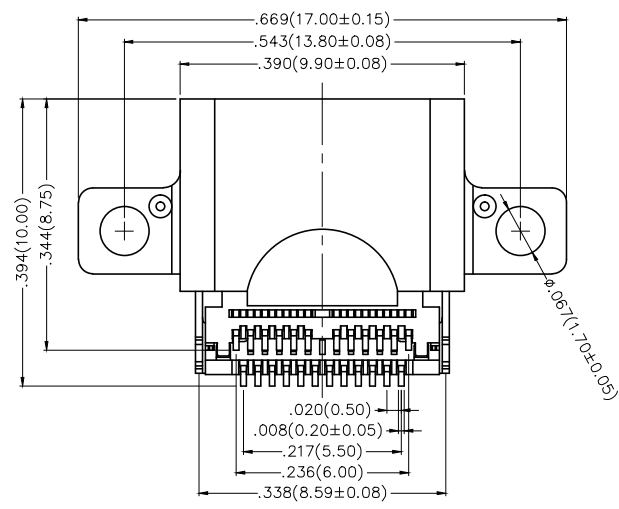
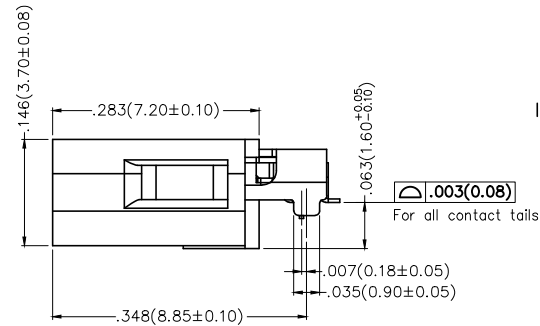
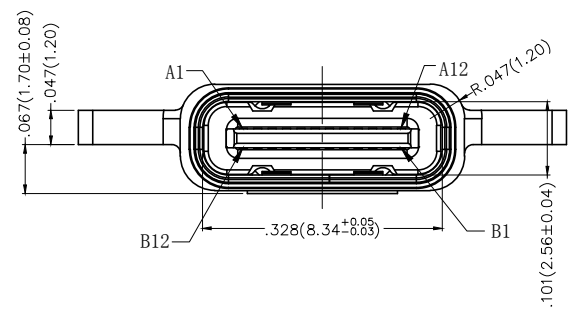
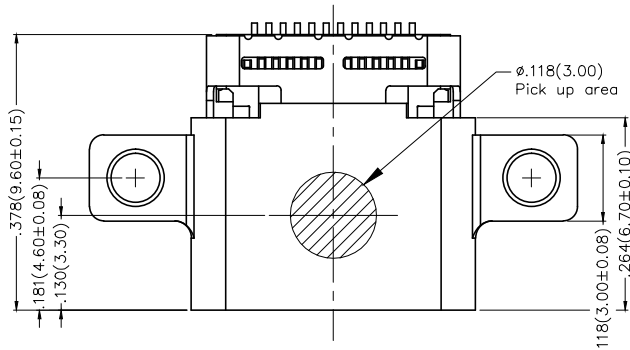


REV	LOCATIONS	DESCRIPTION	DATE	REVISER	APPD



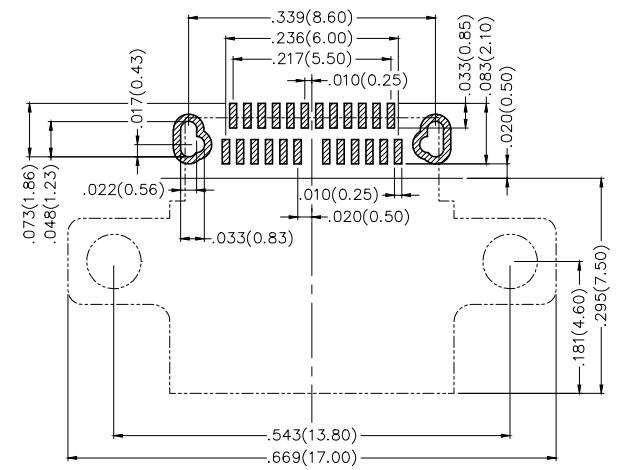
SPECIFICATIONS

Electrical
 Current Rating: 1.0A AC(rms)/DC
 Voltage Rating: 30V AC(rms)/DC
 Contact Resistance: 30 mΩ Max
 Withstanding Voltage: 500V AC r.m.s
 Insulation Resistance: 500 MΩ Min/DC 250V
 Temperature Range-Operating: -20°C~+60°C

Mechanical
 Insertion Force: 5~20N
 Withdrawal Force: 8~20N
 Durability: 2,000 cycles

Material and Plating
 Housing: Thermoplastic (UL 94V-0) Black
 Terminal: Copper alloy/ Gold plated
 Shielding plate: Stainless steel/ Nickel plated
 Shell: Stainless steel/ Nickel plated
 Ingress protection rating: IP66

Circuits	A	Circuits	B
1	GND	12	GND
2	SSTXP1	11	SSRXP1
3	SSTXN1	10	SSRXN1
4	VBUS	9	VBUS
5	CC1	8	SBU2
6	DP1	7	DN2
7	DN1	6	DP2
8	SBU1	5	CC2
9	VBUS	4	VBUS
10	SSRXN2	3	SSTXN2
11	SSRXP2	2	SSTXP2
12	GND	1	GND



Recommended P.C.Board Layout
 General Tolerances: $\pm .002(0.05)$

 THIRD ANGLE PROJECTION	GENERAL TOLERANCES (UNLESS SPECIFIED)		APPROVE BY FRANK	DATE 09/AUG/18	PART NO. FUS628-FSBK6M	ITEM NO. FUS628	 Leader Of Industry
	DESIGN UNITS Inch (metric)	X.±.012(0.30)	X.'±5'	CHECKED BY CHERRY	DATE 09/AUG/18	TITLE USB C-type 90° Angle Female(SMT)(3.1)	
SCALE 5:1	SIZE A4	X.XX±.006(0.15)	XX'±1'	DRAWN BY KATE	DATE 09/AUG/18	THIS DRAWING CONTAINS INFORMATION THAT IS PROPRIETARY TO TXGA INDUSTRIAL ELECTRONICS(S.Z)CO.,LTD AND SHOULD NOT BE USED WITHOUT WRITTEN PERMISSION	REV 0 SHEET NO. 1/1