

REV	LOCATIONS	DESCRIPTION	DATE	REVISER	APPD
1	△	Structure Changes	15/JUN/20	KATE	CHERRY
2	△	1:Structure Changes 2:Add packaging details	29/OCT/24	MATT	LEO

SPECIFICATIONS

Electrical

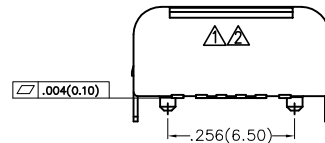
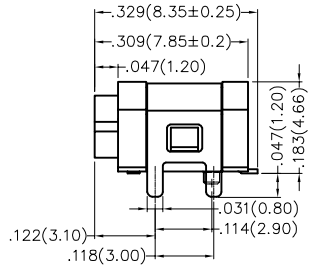
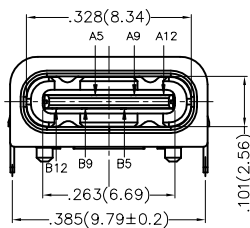
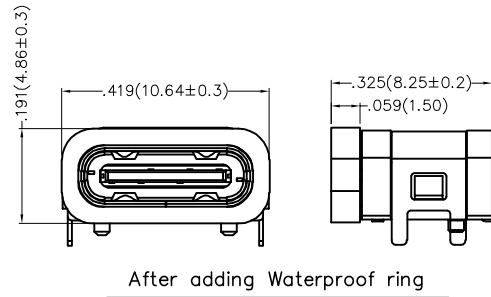
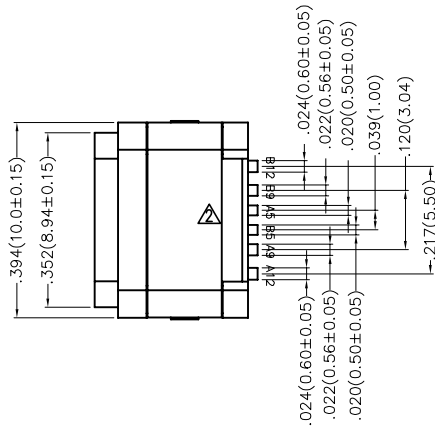
Current Rating: 3.0A AC(rms)/DC
Voltage Rating: 5.0V AC(rms)/DC
Contact Resistance: 40 mΩ Max.
Withstanding Voltage: 100V AC r.m.s
Insulation Resistance: 100 MΩ Min
Temperature Range-Operating: -30°C~+85°C

Mechanical

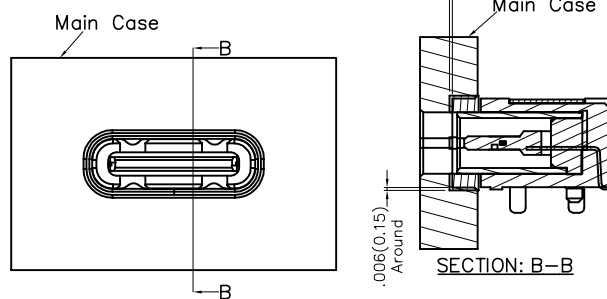
Insertion Force: 5~20N
Withdrawal Force: 8~20N
Durability: 5,000 cycles

Material and Plating

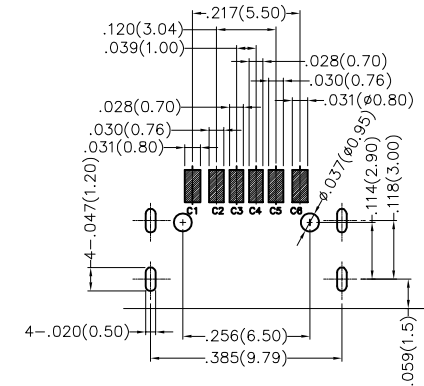
Housing: Thermoplastic (UL 94V-0) Black
Terminal: Copper alloy/ Gold plated in contact area, tin on tail
MID plate: Stainless steel
Shell: Stainless steel/ Nickel plated
Waterproof ring: silica gel
Ingress protection rating: IPX7



Compression Capacity Of Shell Panel
TO Sealing Ring .006(0.15mm)



Recommended Opening Dimensions
Of Case Mating Area With Sealing Ring

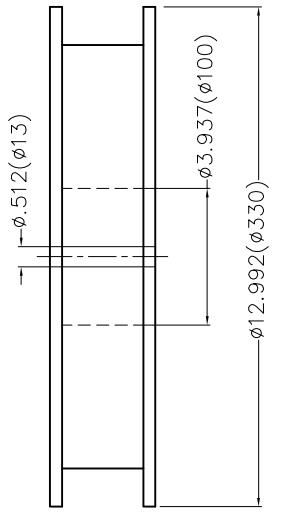
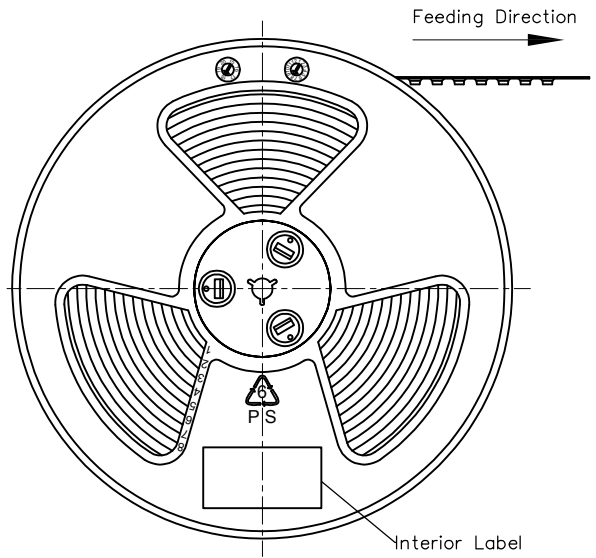


Recommended P.C.Board Layout
General Tolerances: ±.002(±0.05)

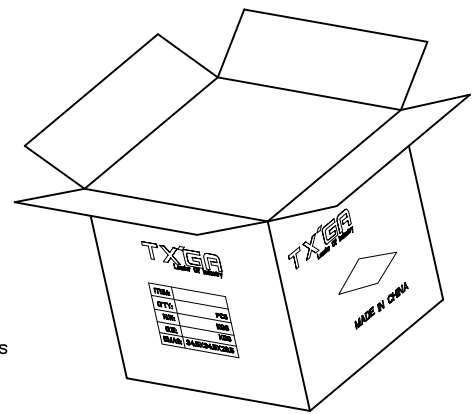
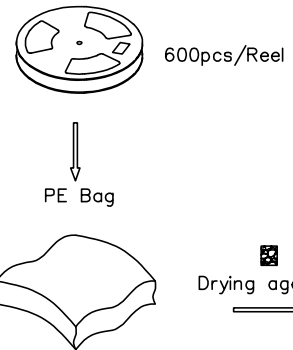
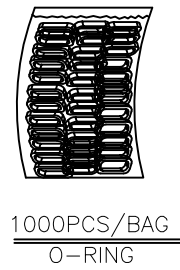
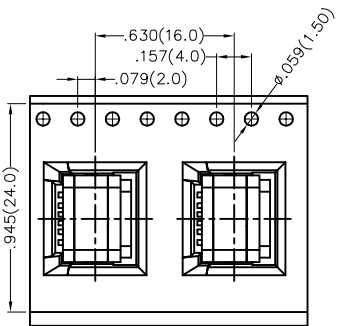
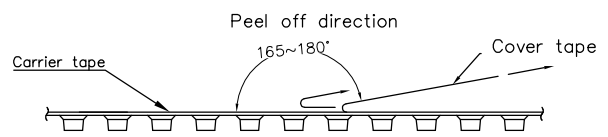
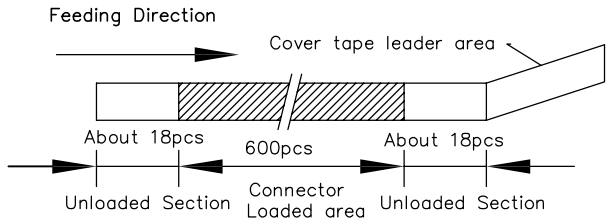
Circuits	A1&B12	A4&B9	A5	B5	A9&B4	A12&B1
Signal name	GND	VBUS	CC1	CC2	VBUS	GND
P.C.B pad No.	C1	C2	C3	C4	C5	C6

THIRD ANGLE PROJECTION	GENERAL TOLERANCES (UNLESS SPECIFIED)		APPROVE BY	DATE	PART NO.	ITEM NO.	 Building Technology Cornerstone
	DESIGN UNITS Inch (metric)	X.±.012(0.30)	X.±5'	FRANK	06/SEP/18	FUS632-FSBK6M	
SCALE	X.XX±.008(0.20)	X.±2'	CHECKED BY	DATE	TITLE		REV 2
5:1	X.XX±.006(0.15)	.XX±1'	KATE	06/SEP/18	USB C-type 90° Angle Female(SMT)(3.0)		SHEET NO. 1/1
SIZE	X.XXX±.004(0.10)	.XXX±0.5'	MATT	DATE	THIS DRAWING CONTAINS INFORMATION THAT IS PROPRIETARY TO TXGA INDUSTRIAL ELECTRONICS(S.Z)CO.,LTD AND SHOULD NOT BE USED WITHOUT WRITTEN PERMISSION		
A4			CHERRY	06/SEP/18			

REV	LOCATIONS	DESCRIPTION	DATE	REVISER	APPD



- Note:
- 1.10 sprocket hole cumulative tolerance ± 0.2
 2. Carrier camber is within 1.0mm in 250mm
 3. Material: Clear conductive polystyrene Alloy 100% recyclable
 4. All dimensions meet EIA-481-3 requirements
 5. Peel off force of cover tape & carrier tape: 20g~130g (0.2N~1.3N)
 6. Component load per 13" reel: 600 pcs



 THIRD ANGLE PROJECTION	GENERAL TOLERANCES (UNLESS SPECIFIED)		APPROVE BY	DATE	PART NO.	ITEM NO.	 Building Technology Cornerstone
	X.±.012(0.30)	X.±5'	FRANK	29/OCT/24	FUS632-FSBK6M	FUS632	
DESIGN UNITS	X.X±.008(0.20)	.X'±2"	CHECKED BY	DATE	TITLE		REV 2 SHEET NO. 2/2
Inch (metric)	X.XX±.006(0.15)	.XX'±1"	CHERRY	29/OCT/24	USB C-type 90° Angle Female(SMT)(3.0)		
SCALE	X.XXX±.004(0.10)	.XXX'±0.5'	DRAWN BY	DATE	THIS DRAWING CONTAINS INFORMATION THAT IS PROPRIETARY TO TXGA INDUSTRIAL ELECTRONICS(S.Z)CO.,LTD AND SHOULD NOT BE USED WITHOUT WRITTEN PERMISSION		
8:1			MATT	29/OCT/24			