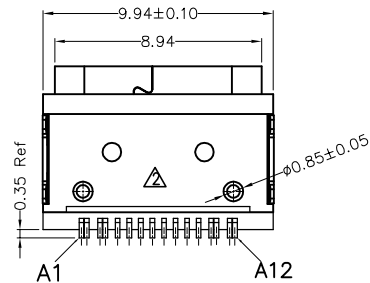
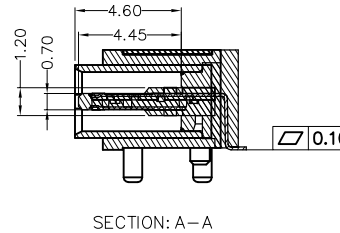
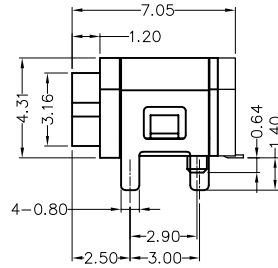
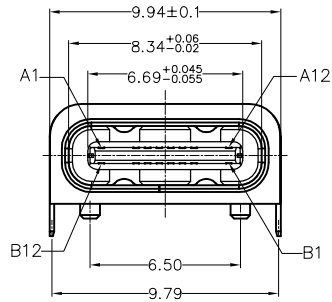
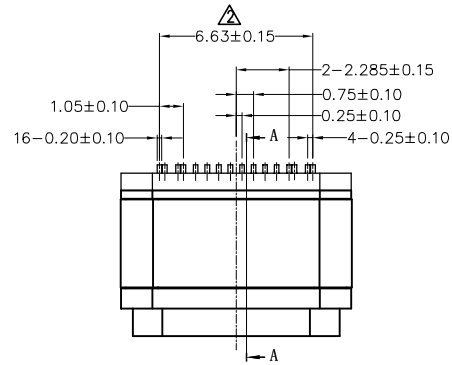


REV	LOCATIONS	DESCRIPTION	DATE	REVISER	APPD
1		Add packaging details	28/NOV/23	MATT	LEO
2		1: MPQ Change from 700 to 600Pcs/Reel 2: Electrical Change 3: Structural and dimensional changes	24/JUL/24	MATT	LEO



Circuits	A	Circuits	B
A1	GND	B12	GND
A4	VBUS	B9	VBUS
A5	CC1	B8	SBU2
A6	DP1	B7	DN2
A7	DN1	B6	DP2
A8	SBU1	B5	CC2
A9	VBUS	B4	VBUS
A12	GND	B1	GND

SPECIFICATIONS

Electrical

Voltage Rating: 5.0V AC(rms)/DC
 Current Rating: 5.0A for VBUS and GND; 1.25A for CC Pin;
 0.25A for other pins
 Contact Resistance: 50 mΩ Max
 Lcr max change of all pins: 10mΩ
 Withstanding Voltage: 100V AC r.m.s
 Insulation Resistance: 100 MΩ Min
 Temperature Range-Operating: -30°C~+85°C

Mechanical

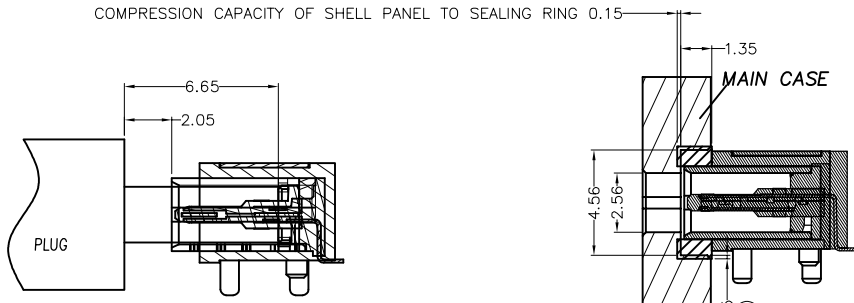
Insertion Force: 5~20N
 Withdrawal Force: 8~20N
 Durability: 10000 cycles
 IR Reflow: The peak temperature on the board shall be maintained for 10 seconds at 260°C

Material and Plating

Housing: Thermoplastic (UL 94V-0)/Black
 Terminal: Copper alloy/Gold plated 0.025μm on contact area,
 Gold flash on tail, Nickel plated 1.25μm Min over all
 Cover: Stainless steel/Nickel plated 0.75μm
 MID Plate: Stainless steel/ Clear only
 Shell: Stainless steel/Nickel Plated 0.75μm Min
 O-RING: Silicone rubber/ Black
 Ingress protection rating: IPX7

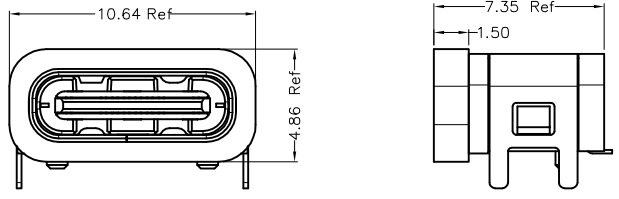
 THIRD ANGLE PROJECTION DESIGN UNITS Inch (metric) SCALE 8:1 SIZE A4	GENERAL TOLERANCES (UNLESS SPECIFIED)		APPROVE BY FRANK	DATE 29/MAR/22	PART NO. FUS638-FSBBKM	ITEM NO. FUS638	 Building Technology Cornerstone	
	X.±.012(0.30)	X'.±5'	CHECKED BY CHERRY	DATE 29/MAR/22	TITLE USB C-type 90° Angle Female(SMT)(3.1)			REV 2
	X.XX±.006(0.15)	.XX'±1'	DRAWN BY IRENE	DATE 29/MAR/22	THIS DRAWING CONTAINS INFORMATION THAT IS PROPRIETARY TO TXGA INDUSTRIAL ELECTRONICS(S.Z)CO.,LTD AND SHOULD NOT BE USED WITHOUT WRITTEN PERMISSION			
	X.XXX±.004(0.10)	.XXX'±0.5'						

REV	LOCATIONS	DESCRIPTION	DATE	REVISER	APPD
1		Add packaging details	28/NOV/23	MATT	LEO
2	△	1: MPQ Change from 700 to 600Pcs/Reel 2: Electrical Change 3: Structural and dimensional changes	24/JUL/24	MATT	LEO

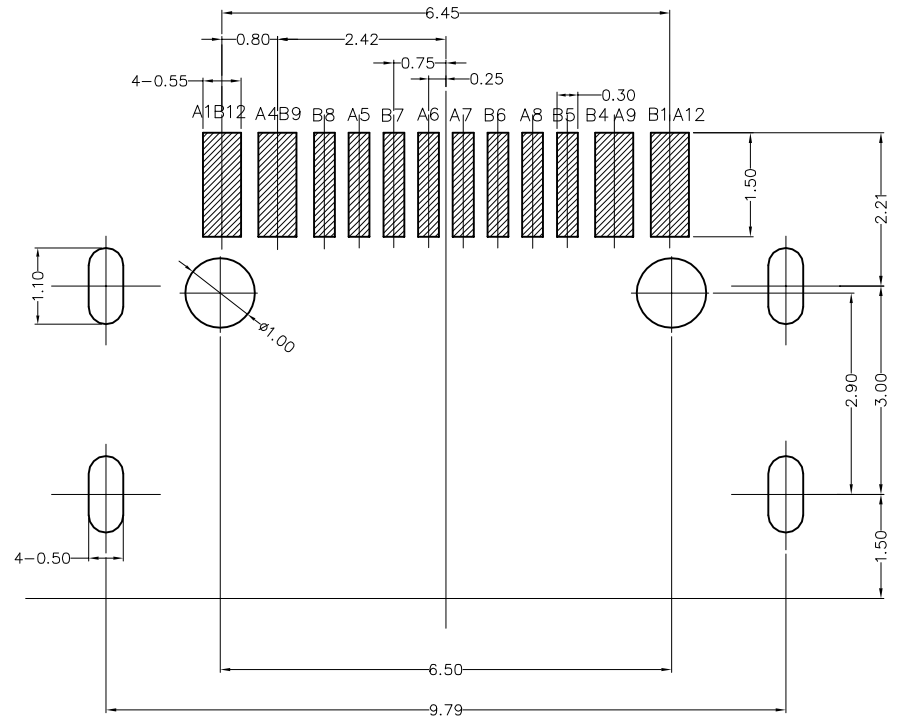


After Mating

△
RECOMMENDED OPENING DIMENSIONS
OF CASE MATING AREA WITH SEALING RING



With O-RING



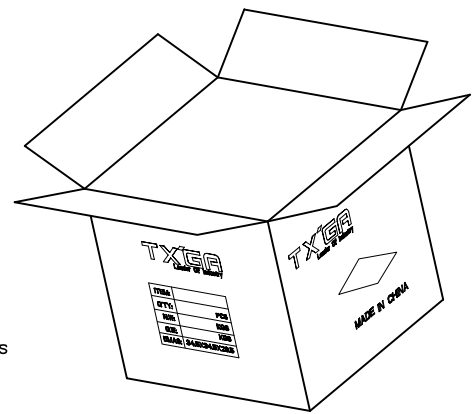
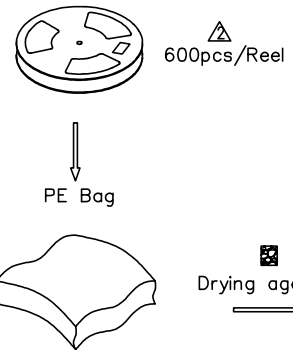
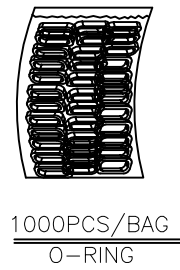
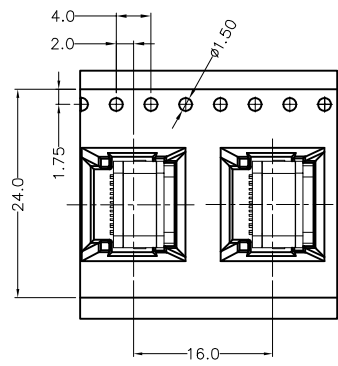
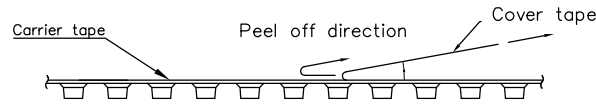
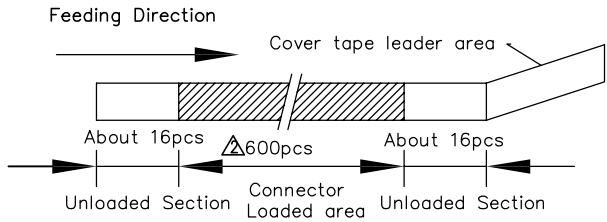
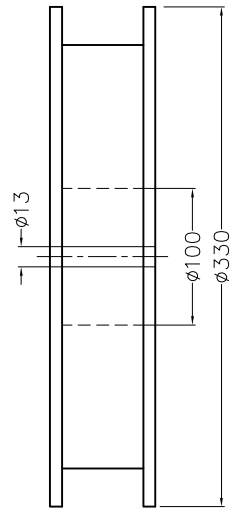
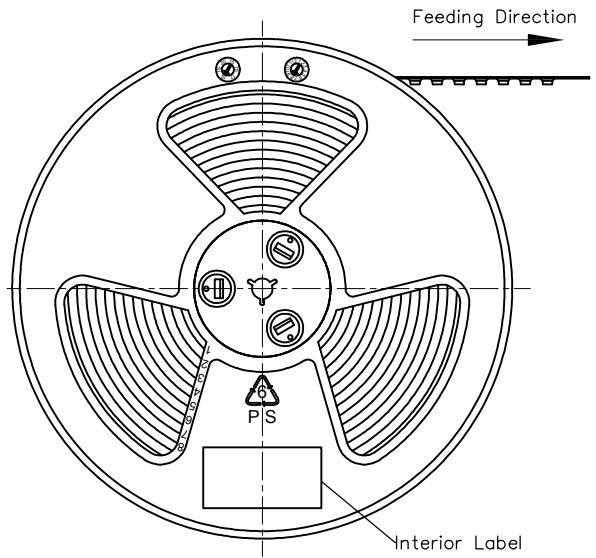
Recommended P.C.Board Layout
General Tolerances: ±0.05mm

 THIRD ANGLE PROJECTION	GENERAL TOLERANCES (UNLESS SPECIFIED)		APPROVE BY FRANK	DATE 29/MAR/22	PART NO. FUS638-FSBBKM	ITEM NO. FUS638	 Building Technology Cornerstone
	X.±.012(0.30)	X.±5'	CHECKED BY CHERRY	DATE 29/MAR/22	TITLE USB C-type 90° Angle Female(SMT)(3.1)		
DESIGN UNITS Inch (metric)	X.X±.008(0.20)	.X'±2'	DRAWN BY IRENE	DATE 29/MAR/22	THIS DRAWING CONTAINS INFORMATION THAT IS PROPRIETARY TO TXGA INDUSTRIAL ELECTRONICS(S.Z)CO.,LTD AND SHOULD NOT BE USED WITHOUT WRITTEN PERMISSION		SHEET NO. 2/3
SCALE 8:1	SIZE A4	X.XX±.006(0.15)					
		X.XXX±.004(0.10)					
		.XX'±1'					
		.XXX'±0.5'					

1 2 3 4 5 6 7 8

REV	LOCATIONS	DESCRIPTION	DATE	REVISER	APPD
1		Add packaging details	28/NOV/23	MATT	LEO
2	△	1: MPQ Change from 700 to 600pcs/Reel 2: Electrical Change 3: Structural and dimensional changes	24/JUL/24	MATT	LEO

- Note:
- 1.10 sprocket hole cumulative tolerance±0.2
 - 2.Carrier camber is within 1.0mm in 250mm
 - 3.Material: Clear conductive polystyrene Alloy 100% recyclable
 - 4.All dimensions meet EIA-481-3 requirements
 - 5.Peel off force of cover tape & carrier tape: 20g~130g (0.2N~1.3N)
 - 6.Component load per 13" reel: 600 pcs △



 THIRD ANGLE PROJECTION	GENERAL TOLERANCES (UNLESS SPECIFIED)		APPROVE BY	DATE	PART NO.	ITEM NO.	 Building Technology Cornerstone
	X.±.012(0.30)	X'.±5'	FRANK	29/MAR/22	FUS638-FSBBKM	FUS638	
DESIGN UNITS	X.X±.008(0.20)	.X'±2'	CHECKED BY	DATE	TITLE		REV 2 SHEET NO. 3/3
Inch (metric)	X.XX±.006(0.15)	.XX'±1'	CHERRY	29/MAR/22	USB C-type 90° Angle Female(SMT)(3.1)		
SCALE	X.XXX±.004(0.10)	.XXX'±0.5'	DRAWN BY	DATE	THIS DRAWING CONTAINS INFORMATION THAT IS PROPRIETARY TO TXGA INDUSTRIAL ELECTRONICS(S.Z)CO.,LTD AND SHOULD NOT BE USED WITHOUT WRITTEN PERMISSION		
8:1			IRENE	29/MAR/22			

1 2 3 4 5 6 7 8