

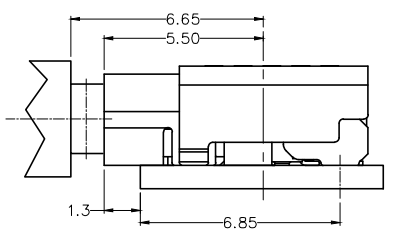
REV	LOCATIONS	DESCRIPTION	DATE	REVISER	APPD

SPECIFICATIONS

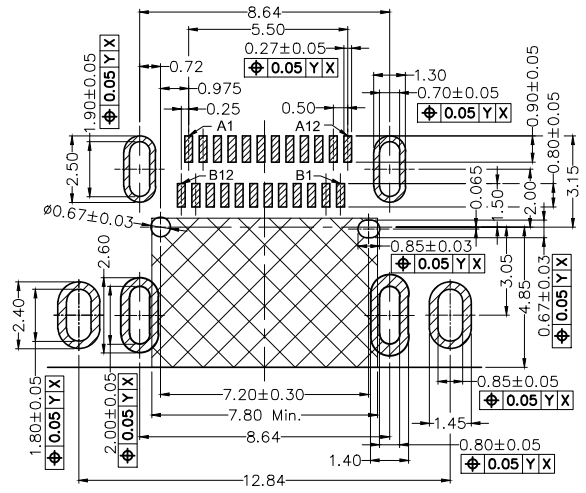
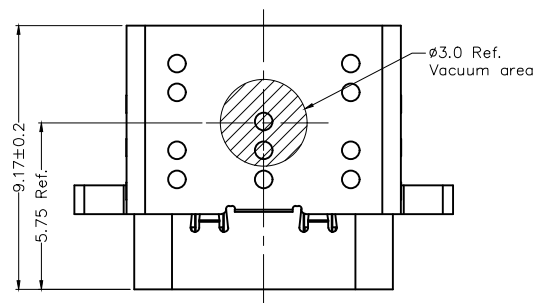
Electrical
 Current Rating: 5.0A
 Voltage Rating: 5V AC(rms)
 Contact Resistance: 40 mΩ Max.
 Insulation Resistance: 100 MΩ Min.
 Withstanding Voltage: 100V AC r.m.s
 Temperature Range—Operating: -40°C~+85°C

Mechanical
 Insertion Force: 5~20 N
 Withdrawal Force: 8~20 N
 Durability: 10,000 cycles

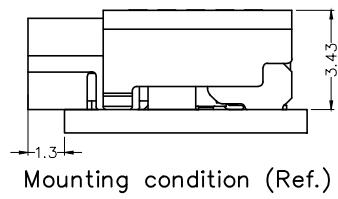
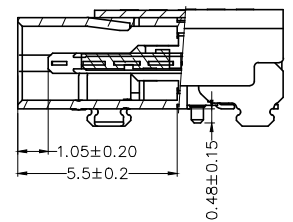
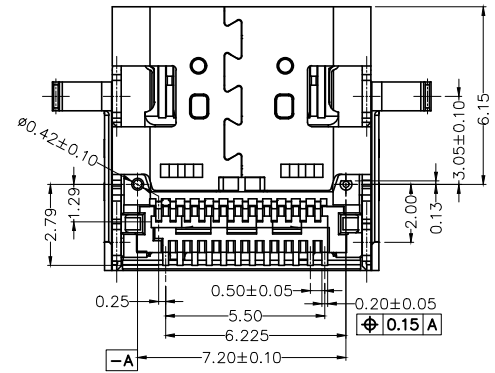
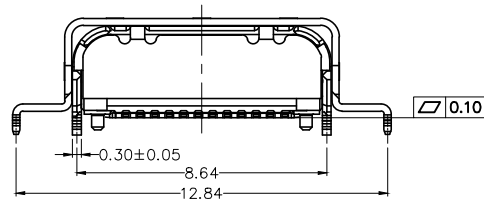
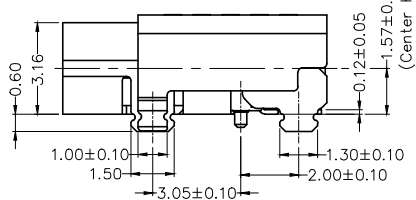
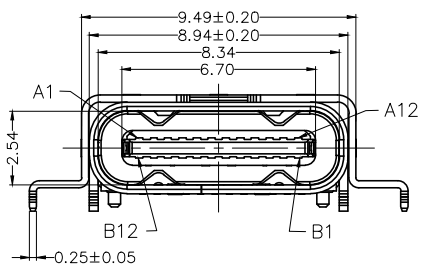
Material and Plating
 Housing: PA9T 30%G.F (UL94 V-0), Black
 Terminal: Copper alloy/ 3μ" Gold plated on contact area and gold flash on tails area
 MID Plate: SUS 301/ Nickel plated
 Shell: SUS 304/ Nickel plated



Mated condition (Ref.)



Recommended P.C.Board Layout
 General Tolerances: ±0.05



Mounting condition (Ref.)

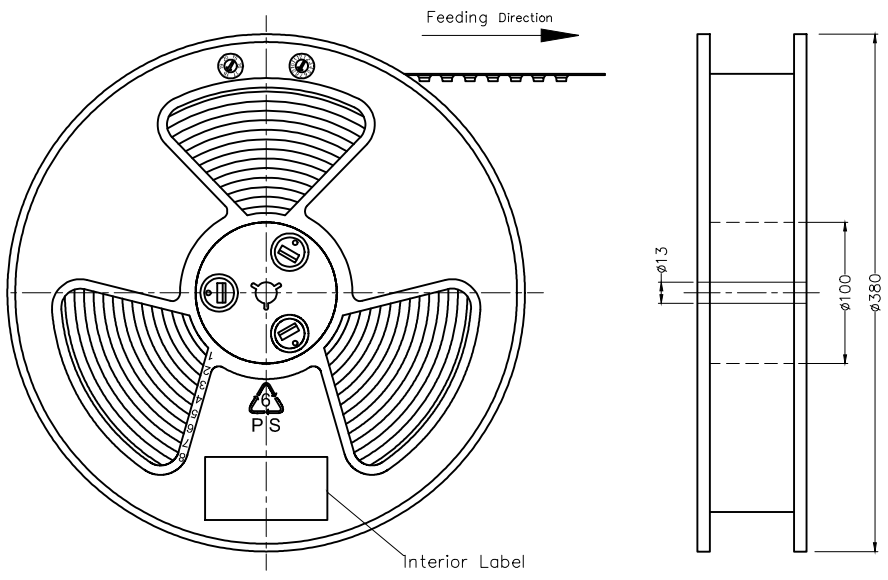
Pin assignment

Circuits	A	Circuits	B
A1	GND	B12	GND
A2	TX1+	B11	RX1+
A3	TX1-	B10	RX1-
A4	VBUS	B9	VBUS
A5	CC1	B8	SBU2
A6	D+	B7	D-
A7	D-	B6	D+
A8	SBU1	B5	CC2
A9	VBUS	B4	VBUS
A10	RX2-	B3	TX2-
A11	RX2+	B2	TX2+
A12	GND	B1	GND

<p>THIRD ANGLE PROJECTION</p>	GENERAL TOLERANCES (UNLESS SPECIFIED)		APPROVE BY FRANK	DATE 24/APR/22	PART NO. FUS644-FSBBKM	ITEM NO. FUS644	<p>Leader Of Industry</p>	
	X. ±0.30	X.* ±5°	CHECKED BY CHERRY	DATE 24/APR/22	TITLE USB Type C 90° Angle Female(SMT)(3.1)			REV 0
	X.X ±0.20	X.X* ±2°	DRAWN BY KATE	DATE 24/APR/22	THIS DRAWING CONTAINS INFORMATION THAT IS PROPRIETARY TO TXGA INDUSTRIAL ELECTRONICS(S.Z)CO.,LTD AND SHOULD NOT BE USED WITHOUT WRITTEN PERMISSION			SHEET NO. 1/2
	X.XX ±0.15	X.XX* ±1°						
SCALE 1:1	SIZE A4	X.XXX ±0.10	X.XXX* ±0.5°					

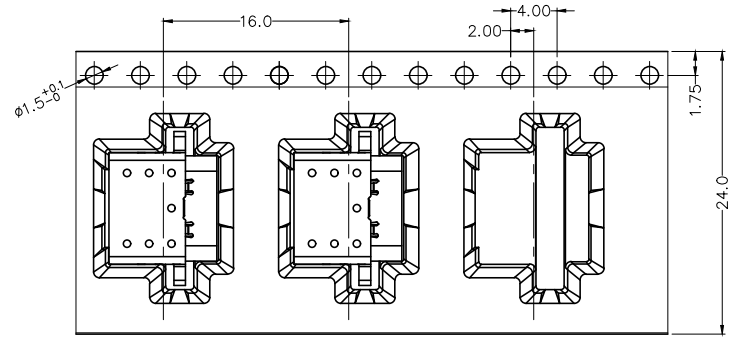
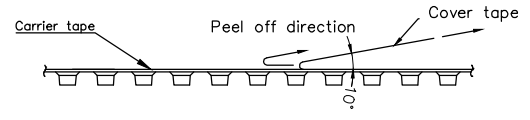
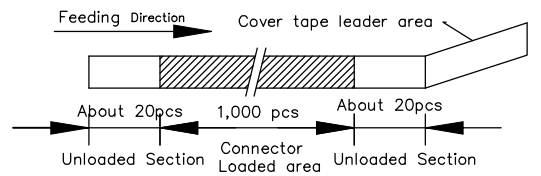
REV	LOCATIONS	DESCRIPTION	DATE	REVISER	APPD

A
B
C
D
E
F

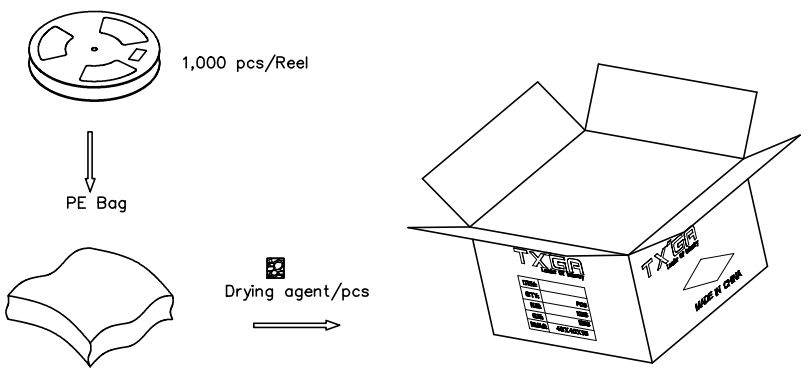
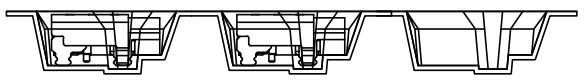


Note:

1. 10 sprocket hole cumulative tolerance±0.2
2. Carrier camber is within 1.0mm in 250mm
3. Material: Clear conductive polystyrene Alloy 100% recyclable
4. All dimensions meet EIA-481-3 requirements
5. Peel off force of cover tape & carrier tape: 20g~130g (0.2N~1.3N)
6. Component load per 15" reel: 1,000 pcs



Feeding Direction



<p>THIRD ANGLE PROJECTION</p>	GENERAL TOLERANCES (UNLESS SPECIFIED)		APPROVE BY	DATE	PART NO.	ITEM NO.	<p>Leader Of Industry</p>
	X. ±0.30	X.* ±5°	FRANK	24/APR/22	FUS644-FSBBKM	FUS644	
	X.X ±0.20	X.X* ±2°	CHECKED BY	DATE	TITLE		
	X.XX ±0.15	X.XX* ±1°	CHERRY	24/APR/22	USB Type C 90° Angle Female(SMT)(3.1)		
SCALE	SIZE	X.XXX ±0.10	X.XXX* ±0.5°	DRAWN BY	DATE	THIS DRAWING CONTAINS INFORMATION THAT IS PROPRIETARY TO TXGA INDUSTRIAL ELECTRONICS(S.Z)CO.,LTD AND SHOULD NOT BE USED WITHOUT WRITTEN PERMISSION	
1:1	A4			KATE	24/APR/22	REV 0	SHEET NO. 2/2