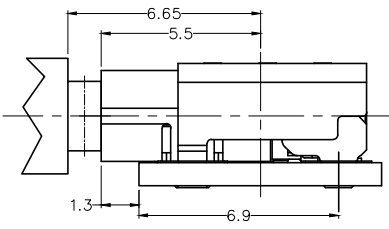
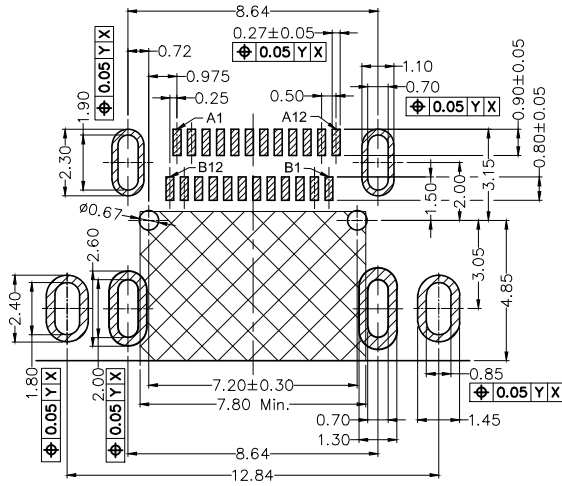
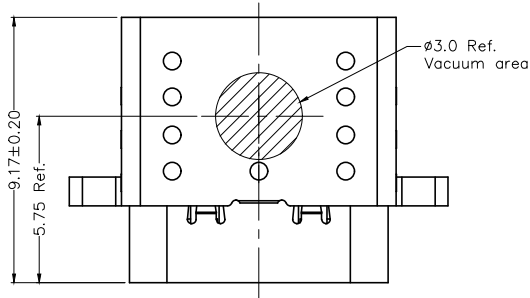


REV	LOCATIONS	DESCRIPTION	DATE	REVISER	APPD



Mated condition (Ref.)



Recommended P.C.Board Layout  
General Tolerances: ±0.05

SPECIFICATIONS

Electrical

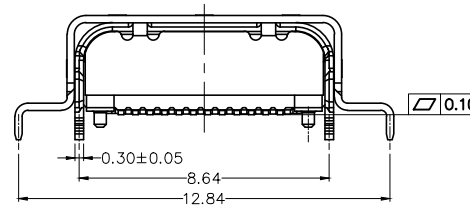
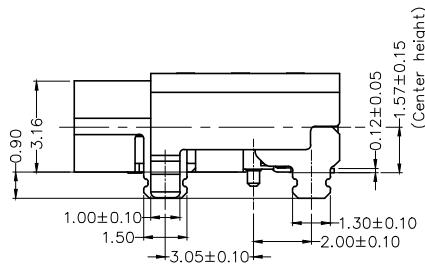
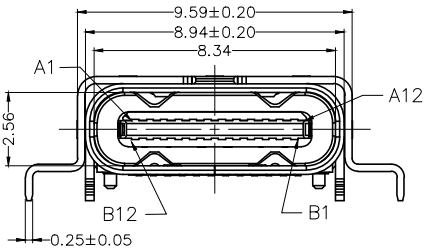
- Current Rating: 5.0A
- Voltage Rating: 5V AC(rms)
- Contact Resistance: 40 mΩ Max.
- Insulation Resistance: 100 MΩ Min.
- Withstanding Voltage: 100V AC r.m.s
- Temperature Range—Operating: -40°C~+85°C

Mechanical

- Insertion Force: 5~20 N
- Withdrawal Force: 8~20 N
- Durability: 10,000 cycles

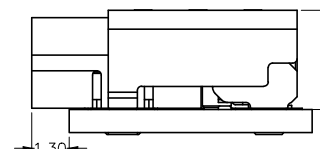
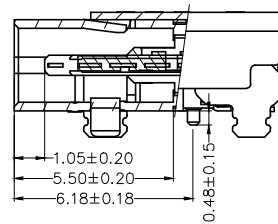
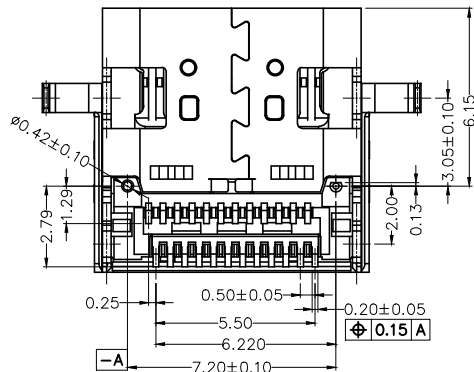
Material and Plating

- Housing: PA9T 30%G.F (UL94 V-0), Black
- Terminal: Copper alloy/ 3μ" Gold plated on contact area and gold flash on tails area
- MID Plate: SUS 301
- Shell: SUS 304/ Nickel plated



Pin assignment

Circuits	A	Circuits	B
A1	GND	B12	GND
A2	TX1+	B11	RX1+
A3	TX1-	B10	RX1-
A4	VBUS	B9	VBUS
A5	CC1	B8	SBU2
A6	D+	B7	D-
A7	D-	B6	D+
A8	SBU1	B5	CC2
A9	VBUS	B4	VBUS
A10	RX2-	B3	TX2-
A11	RX2+	B2	TX2+
A12	GND	B1	GND

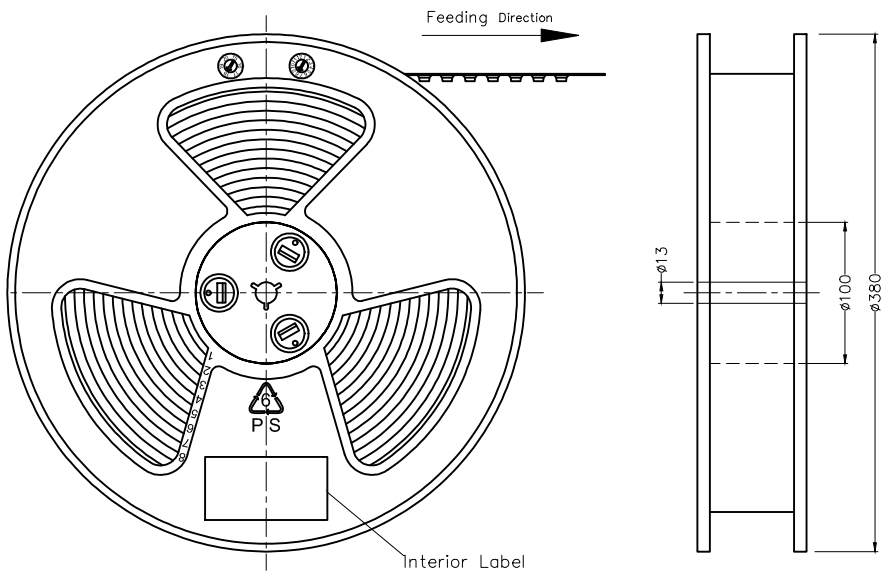


Mounting condition (Ref.)

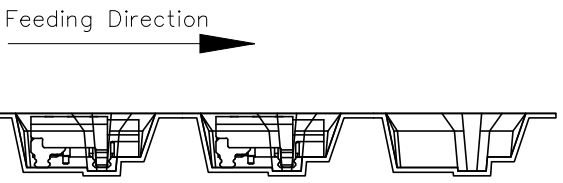
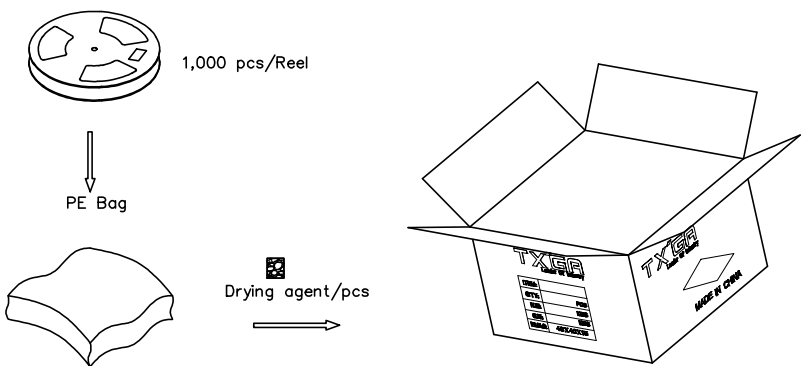
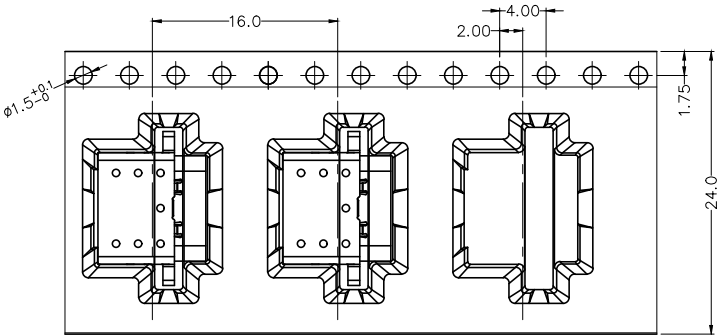
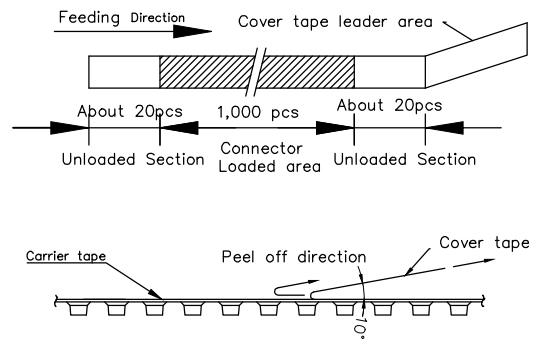
<p>THIRD ANGLE PROJECTION</p>	GENERAL TOLERANCES (UNLESS SPECIFIED)		APPROVE BY	DATE	PART NO.	ITEM NO.	<p>Leader Of Industry</p>
	X. ±0.30	X.* ±5°	FRANK	25/APR/22	FUS645-FSBBKM	FUS645	
	X.X ±0.20	X.X* ±2°	CHECKED BY	DATE	TITLE		
	X.XX ±0.15	X.XX* ±1°	CHERRY	25/APR/22	USB Type C 90° Angle Female(SMT)(3.1)		
SCALE	SIZE	X.XXX ±0.10	X.XXX* ±0.5°	DRAWN BY	DATE	THIS DRAWING CONTAINS INFORMATION THAT IS PROPRIETARY TO TXGA INDUSTRIAL ELECTRONICS(S.Z)CO.,LTD AND SHOULD NOT BE USED WITHOUT WRITTEN PERMISSION	
1:1	A4			KATE	25/APR/22	REV 0	SHEET NO. 1/2

REV	LOCATIONS	DESCRIPTION	DATE	REVISER	APPD

A  
B  
C  
D  
E  
F



- Note:
- 10 sprocket hole cumulative tolerance  $\pm 0.2$
  - Carrier camber is within 1.0mm in 250mm
  - Material: Clear conductive polystyrene Alloy 100% recyclable
  - All dimensions meet EIA-481-3 requirements
  - Peel off force of cover tape & carrier tape: 20g~130g (0.2N~1.3N)
  - Component load per 15" reel: 1,000 pcs



<p>THIRD ANGLE PROJECTION</p>	GENERAL TOLERANCES (UNLESS SPECIFIED)		APPROVE BY	DATE	PART NO.	ITEM NO.	<p>Leader Of Industry</p>
	X. $\pm 0.30$	X.* $\pm 5^{\circ}$	FRANK	25/APR/22	FUS645-FSBBKM	FUS645	
	X.X $\pm 0.20$	X.X* $\pm 2^{\circ}$	CHECKED BY	DATE	TITLE		
	X.XX $\pm 0.15$	X.XX* $\pm 1^{\circ}$	CHERRY	25/APR/22	USB Type C 90° Angle Female(SMT)(3.1)		
SCALE	SIZE	X.XXX $\pm 0.10$	X.XXX* $\pm 0.5^{\circ}$	DRAWN BY	DATE	THIS DRAWING CONTAINS INFORMATION THAT IS PROPRIETARY TO TXGA INDUSTRIAL ELECTRONICS(S.Z)CO.,LTD AND SHOULD NOT BE USED WITHOUT WRITTEN PERMISSION	
1:1	A4			KATE	25/APR/22	REV 0	SHEET NO. 2/2