

REV	LOCATIONS	DESCRIPTION	DATE	REVISER	APPD

SPECIFICATIONS

Electrical

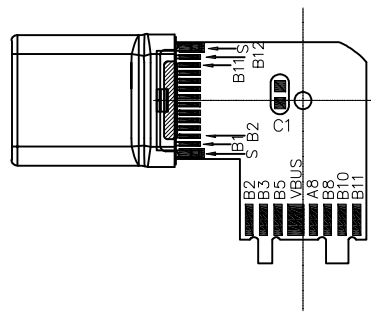
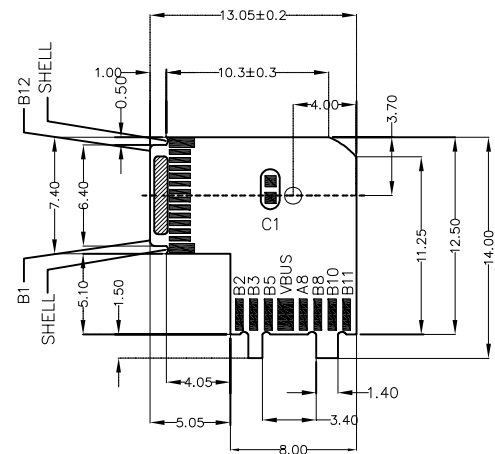
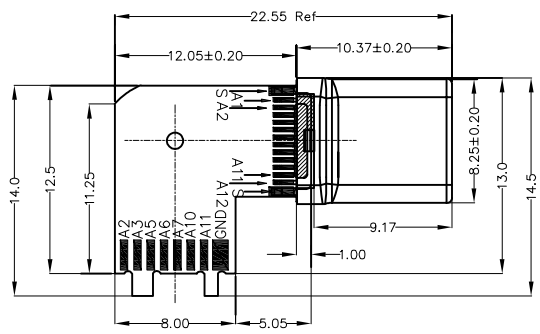
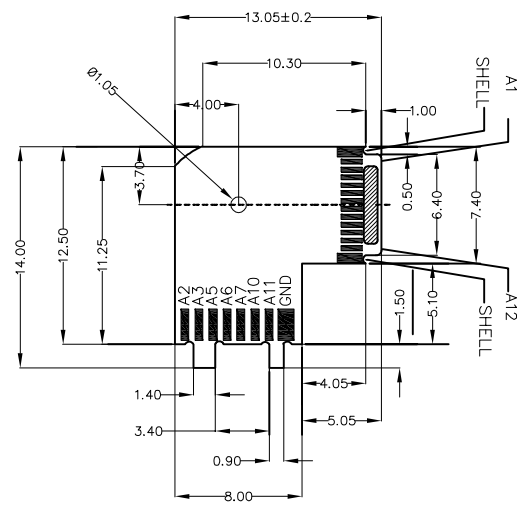
- 1.Current Rating:5A Max for VBUS/GND
0.9A Max for other Pin
- 2.Contact Resistance: 40 mΩ Max
- 3.Insulation Resistance:100 MΩ MIN
- 4.Withstanding Voltage:100V AC r.m.s
- 5.Temperature Range-Operating: -40°C~+85°C

Mechanical

- Mating Force: 20N Max
- Unmating Force: 20N Max
- Mechanical cycles: 10000 cycles

Material and Finish

- 1.Housing: PBT UL 94V-0
- 2.Contact: Copper Alloy/ 1μ" Gold plated on contact area and matting Tin on tails area
- 3.Shell: Steel/20μ" Min Nickel Plated over all
- 4.PCB: CT162-R12/Four layer impedance plate/100±10Ω FR-4,T=0.8mm
C1: Capacitance 10nF



<p>THIRD ANGLE PROJECTION</p>	GENERAL TOLERANCES (UNLESS SPECIFIED)		APPROVE BY	DATE	PART NO.	ITEM NO.	<p>Leader Of Industry</p>
	X.±.012(0.30)	X.±5'	FRANK	16/MAY/22	FUS655-MWBBKB	FUS655	
	X.X±.008(0.20)	.X'±2'	CHECKED BY	DATE	TITLE		
	X.XX±.006(0.15)	.XX'±1'	CHERRY	16/MAY/22	USB C-type 90° Angle Male(Welding)(3.1)		
SCALE	SIZE	X.XXX±.004(0.10)	.XXX'±0.5'	DRAWN BY	DATE	THIS DRAWING CONTAINS INFORMATION THAT IS PROPRIETARY TO TXGA INDUSTRIAL ELECTRONICS(S.Z)CO.,LTD AND SHOULD NOT BE USED WITHOUT WRITTEN PERMISSION	
5:1	A4			STAR	16/MAY/22	REV 0	SHEET NO. 1/1