

REV	LOCATIONS	DESCRIPTION	DATE	REVISER	APPD

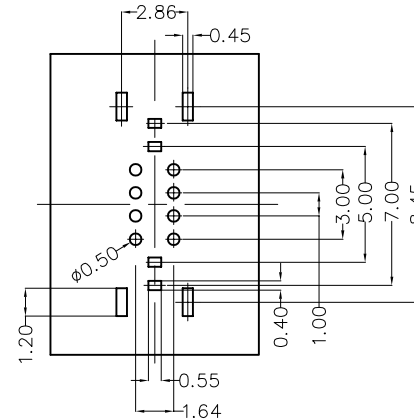
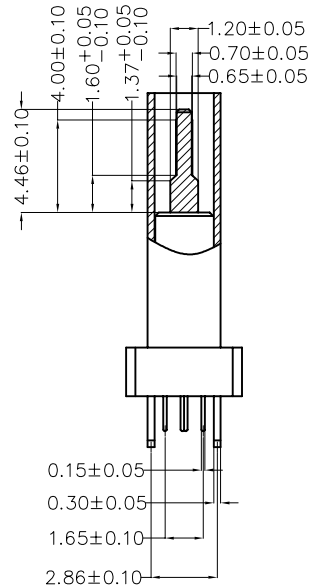
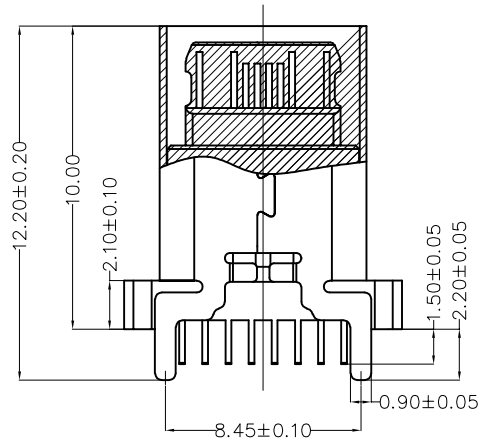
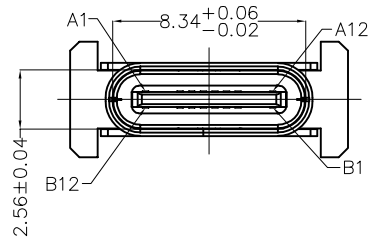
SPECIFICATIONS

Electrical

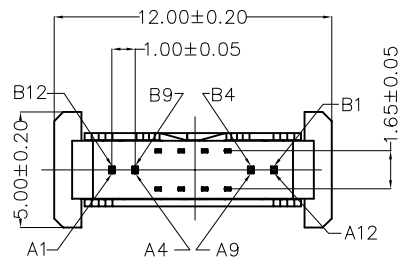
Current Rating: 5.0A AC(rms)/DC
Voltage Rating: 5.0V AC(rms)/DC
Contact Resistance: 30 mΩ Max
Insulation Resistance: 100 MΩ Min
Withstanding Voltage: 100V AC r.m.s
Operating Temperature: -25°C~+85°C

Mechanical

Durability: 10000 cycles Min.
Mating force: 0.5-2.0KG.F
Retention force: 0.8-2.0KG.F
Material and plating
Housing: LCP (UL 94V-0),Black
Contacts: Copper Alloy/Gold Plated
Shell: Stainless steel/Nickel Plated



Recommended P.C.Board Layout
General tolerances ±0.05mm



Circuits	A	Circuits	B
A1	GND	B12	GND
A4	VBUS	B9	VBUS
A5	CC1	B8	SBU2
A6	DP1	B7	DN2
A7	DN1	B6	DP2
A8	SBU1	B5	CC2
A9	VBUS	B4	VBUS
A12	GND	B1	GND

 THIRD ANGLE PROJECTION	GENERAL TOLERANCES (UNLESS SPECIFIED)		APPROVE BY FRANK	DATE 15/JUL/22	PART NO. FUS656-FDSBKK	ITEM NO. FUS656	 Leader Of Industry	
	DESIGN UNITS (metric)	X.±0.30 X.X±0.20 X.XX±0.15 X.XXX±0.10	X'±5" .X'±2" .XX'±1" .XXX'±0.5"	CHECKED BY CHERRY	DATE 14/JUL/22	TITLE USB C-type 180° Vertical Female(DIP)(3.1)		REV 0
SCALE 12:1	SIZE A4	DRAWN BY QING		DATE 13/JUL/22	THIS DRAWING CONTAINS INFORMATION THAT IS PROPRIETARY TO TXGA INDUSTRIAL ELECTRONICS(S.Z)CO.,LTD AND SHOULD NOT BE USED WITHOUT WRITTEN PERMISSION			