

REV	LOCATIONS	DESCRIPTION	DATE	REVISER	APPD

**SPECIFICATIONS**

**Electrical**

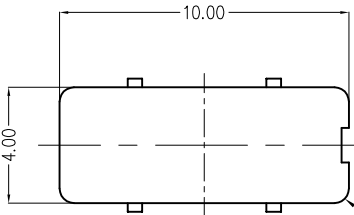
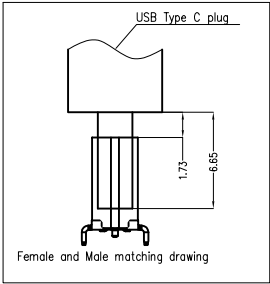
Current Rating: 5.0A AC(rms)/DC  
 Voltage Rating: 5.0V AC(rms)/DC  
 Contact Resistance: 50 mΩ Max  
 Insulation Resistance: 100 MΩ Min  
 Withstanding Voltage: 100V AC r.m.s  
 Operating Temperature: -25°C~+85°C

**Mechanical**

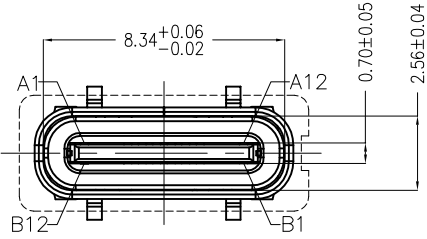
Durability: 10000 cycles Min.  
 Mating force: 0.5-2.0KG.F  
 Retention force: 0.8-2.0KG.F

**Material and plating**

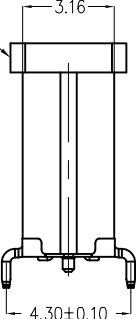
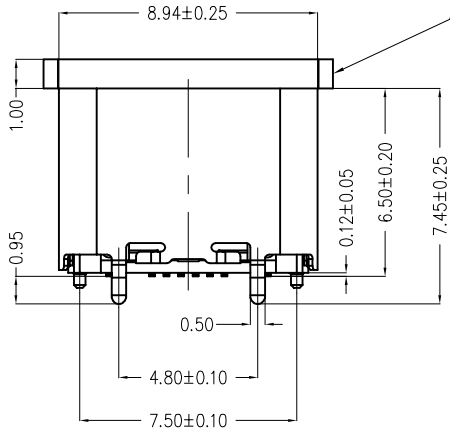
Housing: LCP (UL 94V-0), Black  
 Contacts: Copper Alloy/ Au 3u" Plated on contact  
 Shell: Stainless steel/Nickel Plated  
 Mid Plate: Clear Only



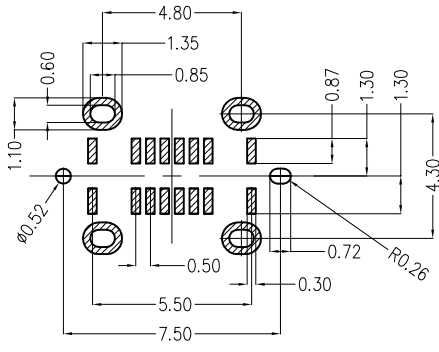
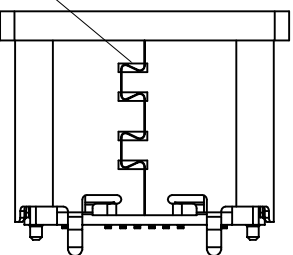
take off



plastic cover

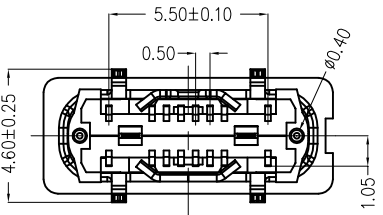


Riveting points(4X)



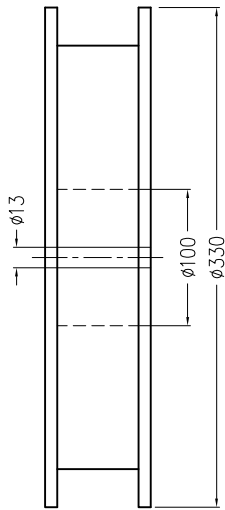
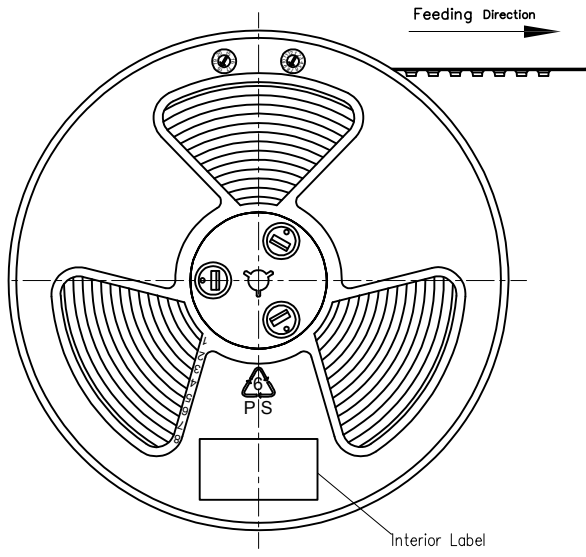
Recommended P.C.Board Layout  
 General tolerances ±0.05mm

Circuits	A	Circuits	B
A1	GND	B12	GND
A4	VBUS	B9	VBUS
A5	CC1	B8	SBU2
A6	DP1	B7	DN2
A7	DN1	B6	DP2
A8	SBU1	B5	CC2
A9	VBUS	B4	VBUS
A12	GND	B1	GND

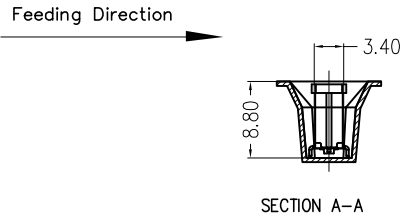
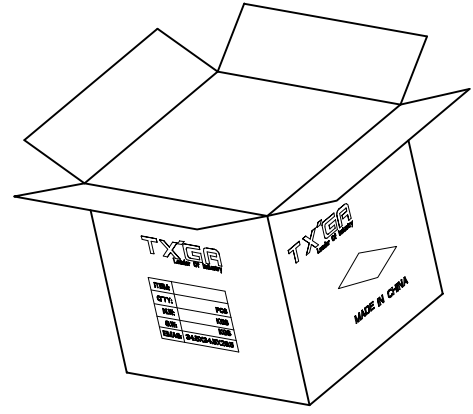
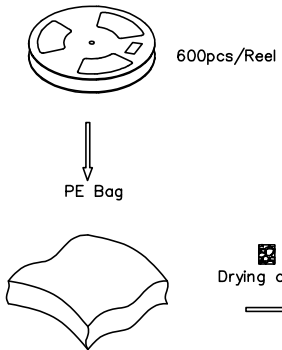
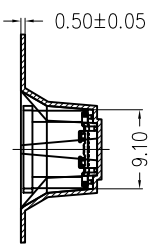
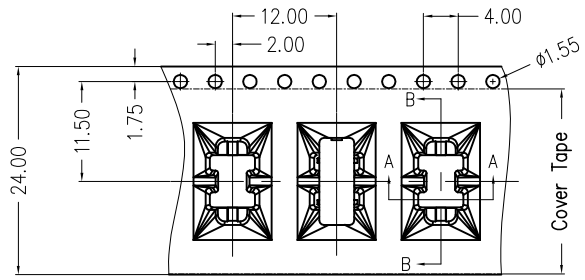
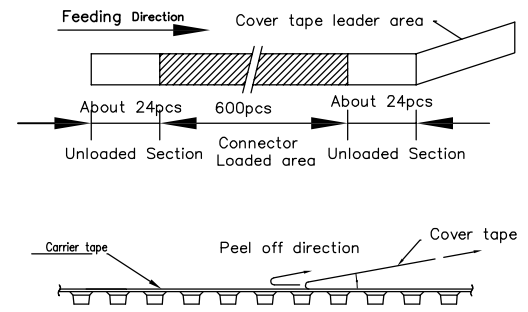


<p>THIRD ANGLE PROJECTION</p>	GENERAL TOLERANCES (UNLESS SPECIFIED)		APPROVE BY FRANK	DATE 09/SEP/22	PART NO. FUS658-FSSBKM	ITEM NO. FUS658	<p>Leader Of Industry</p>		
	DESIGN UNITS (metric)	X.±0.30	X'.±5'	CHECKED BY CHERRY	DATE 09/SEP/22	TITLE USB C-type 180° Vertical Female(SMT)		REV 0	
	SCALE 5:1	X.XX±0.15	.XX'±1"	DRAWN BY QING	DATE 09/SEP/22	THIS DRAWING CONTAINS INFORMATION THAT IS PROPRIETARY TO TXGA INDUSTRIAL ELECTRONICS(S.Z)CO.,LTD AND SHOULD NOT BE USED WITHOUT WRITTEN PERMISSION		SHEET NO. 1/2	
	SIZE A4	X.XXX±0.10	.XXX'±0.5"						

REV	LOCATIONS	DESCRIPTION	DATE	REVISER	APPD



- Note:
- 1.10 sprocket hole cumulative tolerance  $\pm 0.2$
  2. Carrier camber is within 1.0mm in 250mm
  3. Material: Clear conductive polystyrene Alloy 100% recyclable
  4. All dimensions meet EIA-481-3 requirements
  5. Peel off force of cover tape & carrier tape: 20g~130g (0.2N~1.3N)
  6. Component load per 13" reel: 600 pcs



 THIRD ANGLE PROJECTION	GENERAL TOLERANCES (UNLESS SPECIFIED)		APPROVE BY FRANK	DATE 09/SEP/22	PART NO. FUS658-FSSBKM	ITEM NO. FUS658	 Leader Of Industry
	X.±0.30	X.'±5'	CHECKED BY CHERRY	DATE 09/SEP/22	TITLE USB C-type 180° Vertical Female(SMT)		
DESIGN UNITS (metric)	X.X±0.20	.X'±2'	DRAWN BY QING	DATE 09/SEP/22	THIS DRAWING CONTAINS INFORMATION THAT IS PROPRIETARY TO TXGA INDUSTRIAL ELECTRONICS(S.Z)CO.,LTD AND SHOULD NOT BE USED WITHOUT WRITTEN PERMISSION		
SCALE 5:1	SIZE A4	X.XXX±0.10	.XXX'±0.5'				