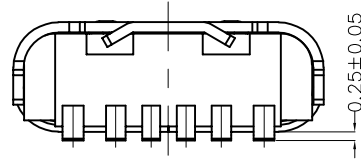
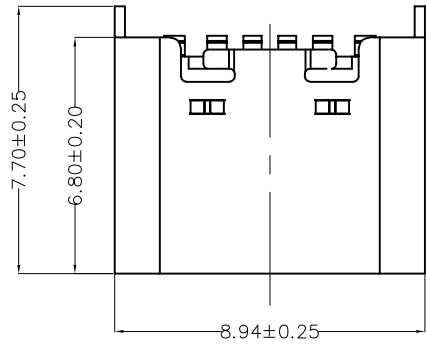


REV	LOCATIONS	DESCRIPTION	DATE	REVISER	APPD

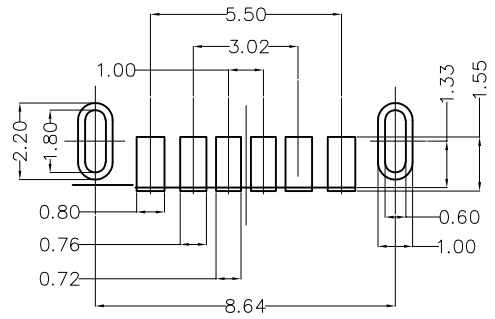
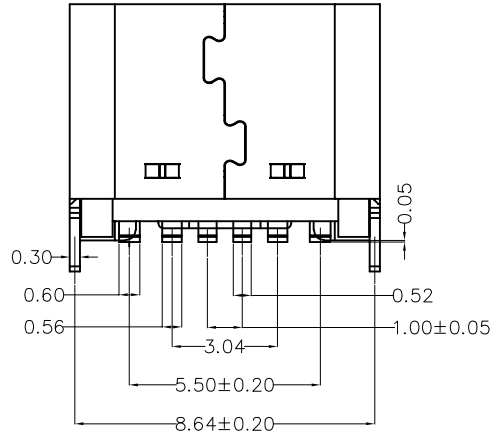
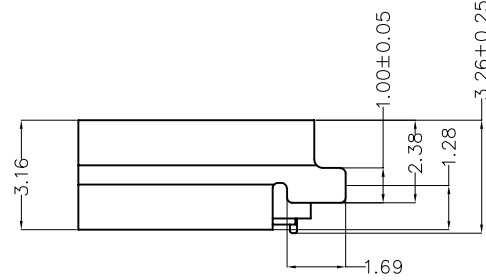
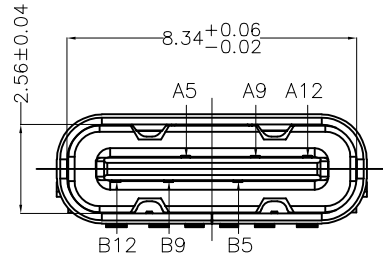


SPECIFICATIONS

Electrical
 Current Rating: 3.0A AC(rms)/DC
 Voltage Rating: 5.0V AC(rms)/DC
 Contact Resistance: 50 mΩ Max
 Insulation Resistance: 100 MΩ Min
 Withstanding Voltage: 100V AC r.m.s
 Operating Temperature: -25°C~+85°C

Mechanical
 Durability: 5000 cycles Min.
 Mating force: 0.5-2.0KG.F
 Retention force: 0.8-2.0KG.F

Material and plating
 Housing: LCP (UL 94V-0), Black
 Contacts: Copper Alloy/Gold Plated
 Shell: Stainless steel/Nickel Plated

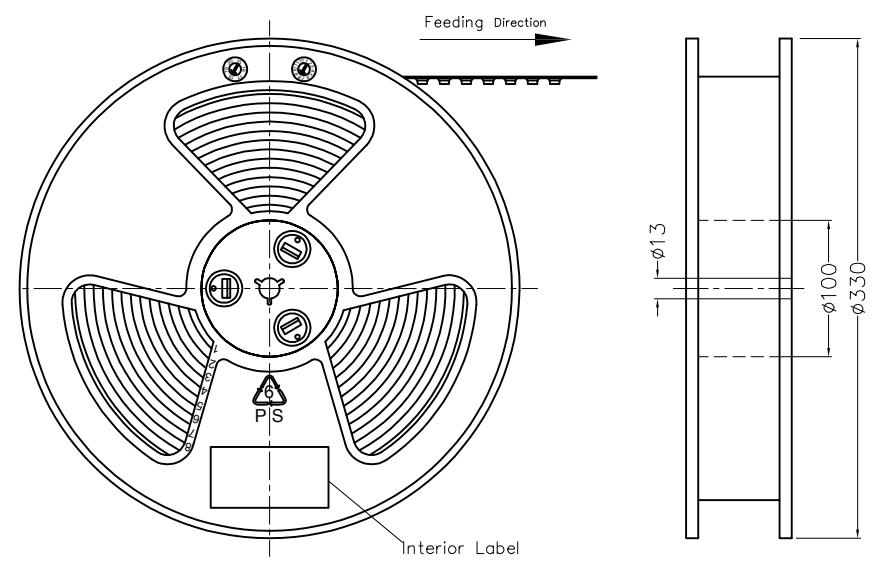


Recommended P.C.Board Layout
 General tolerances ±0.05mm

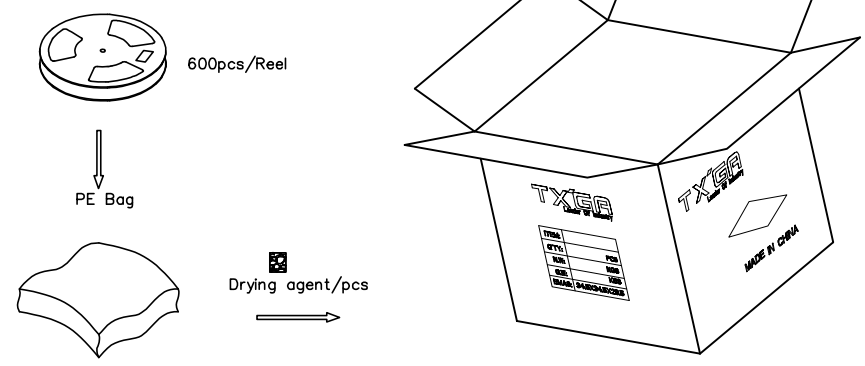
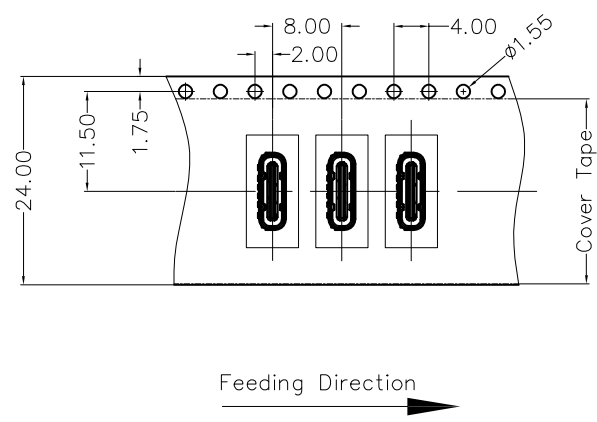
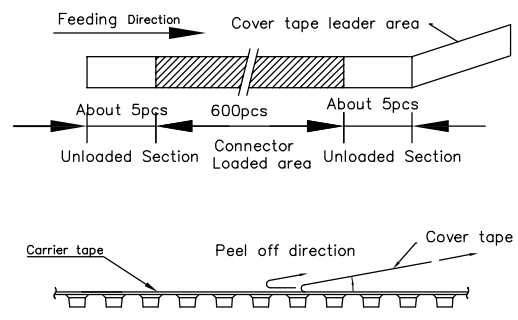
Circuits	A
A5	CC1
A9	VBUS
A12	GND
Circuits	B
B5	SBU2
B9	VBUS
B12	GND

 THIRD ANGLE PROJECTION	GENERAL TOLERANCES (UNLESS SPECIFIED)		APPROVE BY FRANK	DATE 13/JUL/22	PART NO. FUS672-FSSBKM	ITEM NO. FUS672	 Leader Of Industry
	DESIGN UNITS (metric)	X.±0.30	X.±5°	CHECKED BY CHERRY	DATE 13/JUL/22	TITLE USB C-type 180° Vertical Female(SMT)(3.1)	
SCALE 5:1	SIZE A4	X.XX±0.15	.XX±1°	DRAWN BY QING	DATE 13/JUL/22	THIS DRAWING CONTAINS INFORMATION THAT IS PROPRIETARY TO TXGA INDUSTRIAL ELECTRONICS(S.Z)CO.,LTD AND SHOULD NOT BE USED WITHOUT WRITTEN PERMISSION	
		X.XXX±0.10	.XXX±0.5°			REV 0	SHEET NO. 1/2

REV	LOCATIONS	DESCRIPTION	DATE	REVISER	APPD



Note:
 1.10 sprocket hole cumulative tolerance ± 0.2
 2.Carrier camber is within 1.0mm in 250mm
 3.Material: Clear conductive polystyrene Alloy 100% recyclable
 4.All dimensions meet EIA-481-3 requirements
 5.Peel off force of cover tape & carrier tape: 20g~130g (0.2N~1.3N)
 6.Component load per 13" reel: 600 pcs



 THIRD ANGLE PROJECTION	GENERAL TOLERANCES (UNLESS SPECIFIED)		APPROVE BY	DATE	PART NO.	ITEM NO.	 Leader Of Industry
	X. ± 0.30	X. $\pm 5'$	FRANK	13/JUL/22	FUS672-FSSBKM	FUS672	
DESIGN UNITS (metric)	X.X ± 0.20	X. $\pm 2'$	CHECKED BY	DATE	TITLE		REV 0 SHEET NO. 2/2
SCALE 5:1 SIZE A4	X.XX ± 0.15	.XX' $\pm 1'$	CHERRY	13/JUL/22	USB C-type 180° Vertical Female(SMT)(3.1)		
	X.XXX ± 0.10	.XXX' $\pm 0.5'$	DRAWN BY	DATE	THIS DRAWING CONTAINS INFORMATION THAT IS PROPRIETARY TO TXGA INDUSTRIAL ELECTRONICS(S.Z)CO.,LTD AND SHOULD NOT BE USED WITHOUT WRITTEN PERMISSION		
			QING	13/JUL/22			