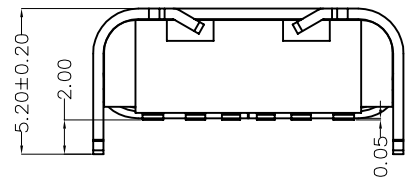
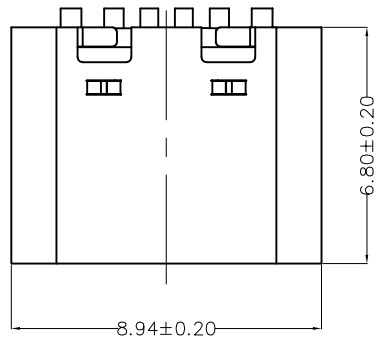


REV	LOCATIONS	DESCRIPTION	DATE	REVISER	APPD

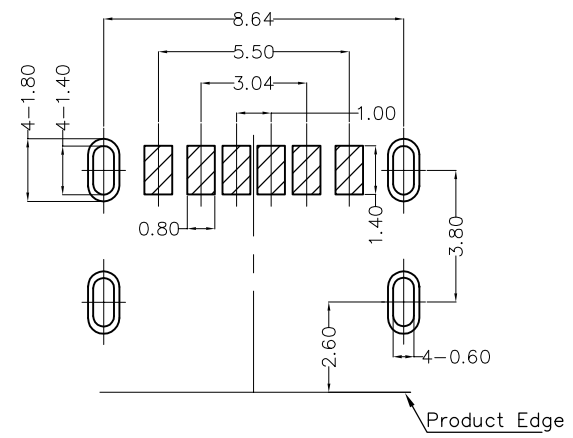
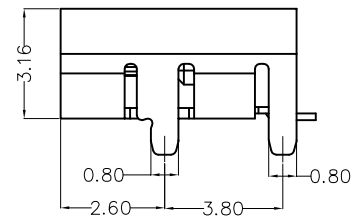
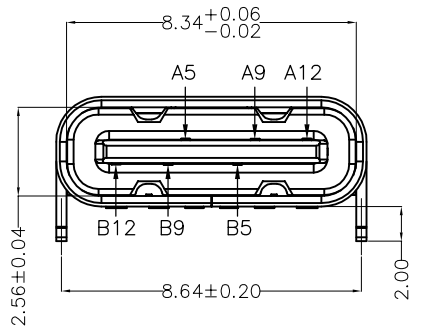


**SPECIFICATIONS**

**Electrical**  
 Current Rating: 3.0A AC(rms)/DC  
 Voltage Rating: 5.0V AC(rms)/DC  
 Contact Resistance: 50 mΩ Max  
 Insulation Resistance: 100 MΩ Min  
 Withstanding Voltage: 100V AC r.m.s  
 Operating Temperature: -25°C~+85°C

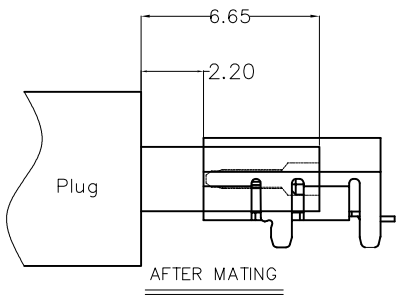
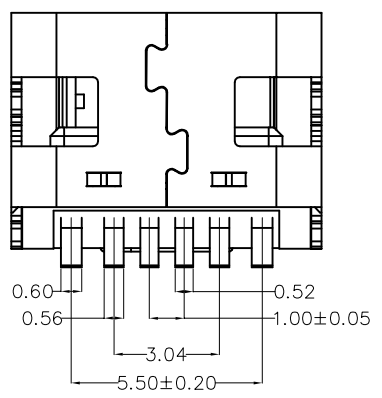
**Mechanical**  
 Durability: 5000 cycles Min.  
 Mating force: 0.5-2.0KG.F  
 Retention force: 0.8-2.0KG.F

**Material and plating**  
 Housing: LCP (UL 94V-0),Black  
 Contacts: Copper Alloy/Gold Plated  
 Shell: Stainless steel/Nickel Plated



Recommended P.C.Board Layout  
 General tolerances ±0.05mm

Circuits	A
A5	CC1
A9	VBUS
A12	GND
Circuits	B
B5	CC2
B9	VBUS
B12	GND



 THIRD ANGLE PROJECTION	GENERAL TOLERANCES (UNLESS SPECIFIED)		APPROVE BY	DATE	PART NO. FUS674-FSBBKM	ITEM NO. FUS674	 Leader Of Industry
	X.±0.30	X'±5°	FRANK	13/JUL/22			
	DESIGN UNITS (metric)		CHECKED BY	DATE	TITLE		
	X.X±0.20	.X'±2°	CHERRY	13/JUL/22	USB C-type 90° Angle Female(SMT)(3.1)		
SCALE	SIZE	X.XX±0.15	.XX'±1°	DRAWN BY	DATE	THIS DRAWING CONTAINS INFORMATION THAT IS PROPRIETARY TO TXGA INDUSTRIAL ELECTRONICS(S.Z)CO.,LTD AND SHOULD NOT BE USED WITHOUT WRITTEN PERMISSION	
5:1	A4	X.XXX±0.10	.XXX'±0.5°	QING	13/JUL/22	REV 0	SHEET NO. 1/2