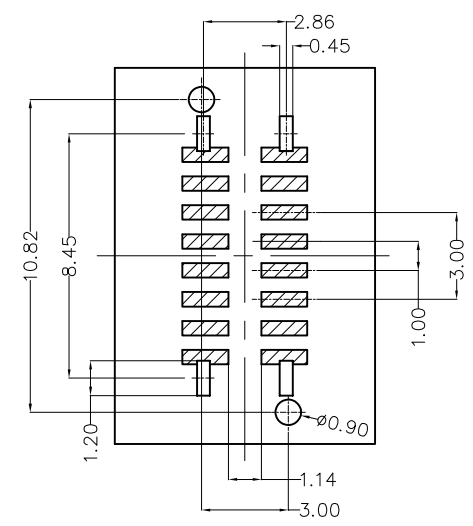
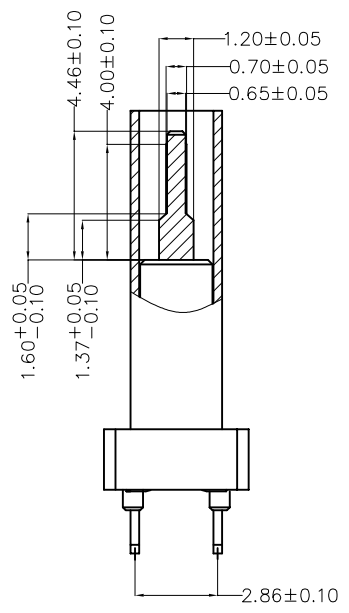
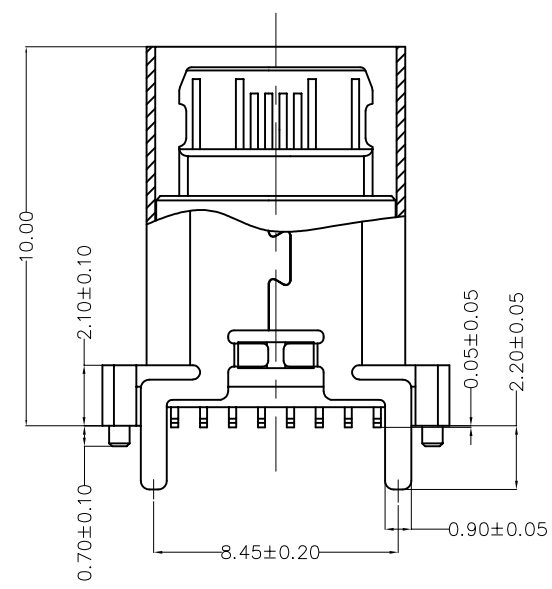
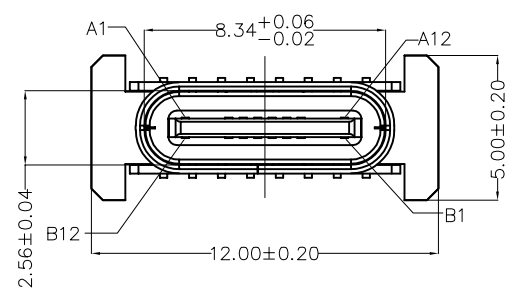


REV	LOCATIONS	DESCRIPTION	DATE	REVISER	APPD



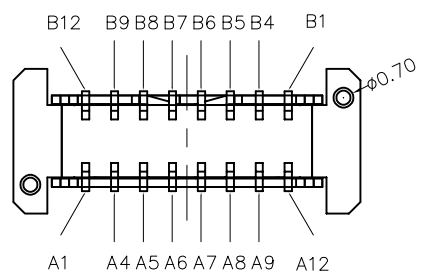
Recommended P.C.Board Layout
General tolerances ±0.05mm

SPECIFICATIONS

Electrical
 Current Rating: 3.0A AC(rms)/DC
 Voltage Rating: 5.0V AC(rms)/DC
 Contact Resistance: 50 mΩ Max
 Insulation Resistance: 100 MΩ Min
 Withstanding Voltage: 100V AC r.m.s
 Operating Temperature: -25°C~+85°C

Mechanical
 Durability: 10000 cycles Min.
 Mating force: 0.5-2.0KG.F
 Retention force: 0.8-2.0KG.F

Material and plating
 Housing: LCP (UL 94V-0), Black
 Contacts: Copper Alloy/Gold Plated
 Shell: Stainless steel/Nickel Plated



Circuits	A	Circuits	B
A1	GND	B12	GND
A4	VBUS	B9	VBUS
A5	CC1	B8	SBU2
A6	DP1	B7	DN2
A7	DN1	B6	DP2
A8	SBU1	B5	CC2
A9	VBUS	B4	VBUS
A12	GND	B1	GND

 THIRD ANGLE PROJECTION DESIGN UNITS (metric) SCALE 5:1 SIZE A4	GENERAL TOLERANCES (UNLESS SPECIFIED) X.±0.30 X.±5' X.X±0.20 X.±2' X.XX±0.15 .XX'±1" X.XXX±0.10 .XXX'±0.5'		APPROVE BY FRANK CHECKED BY CHERRY DRAWN BY QING	DATE 13/JUL/22 DATE 13/JUL/22 DATE 13/JUL/22	PART NO. FUS675-FSSBKK TITLE USB C-type 180° Vertical Female(SMT)(3.1)	ITEM NO. FUS675 REV 0	 Leader Of Industry SHEET NO. 1/1
	THIS DRAWING CONTAINS INFORMATION THAT IS PROPRIETARY TO TXGA INDUSTRIAL ELECTRONICS(S.Z)CO.,LTD AND SHOULD NOT BE USED WITHOUT WRITTEN PERMISSION						