

REV	LOCATIONS	DESCRIPTION	DATE	REVISER	APPD

SPECIFICATIONS

Electrical

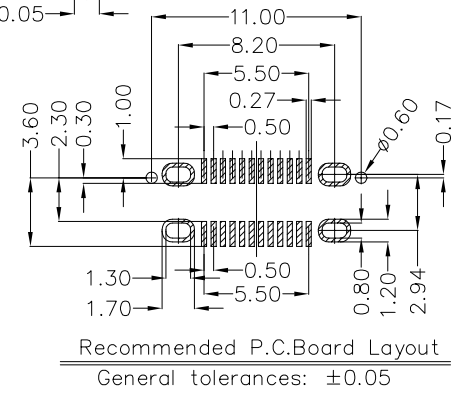
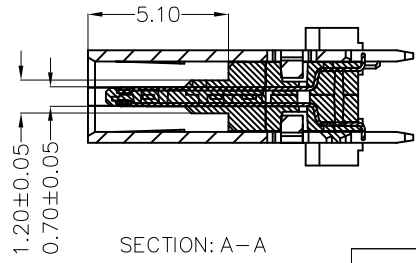
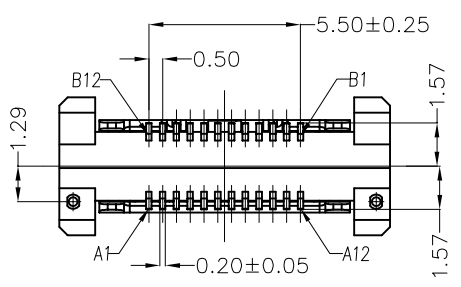
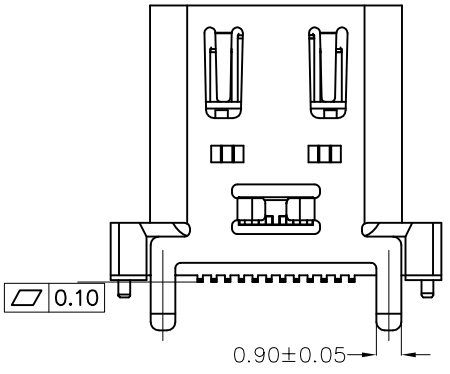
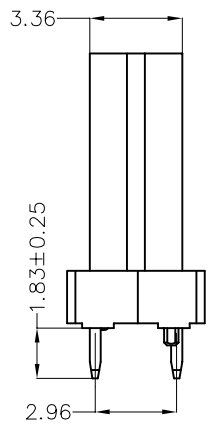
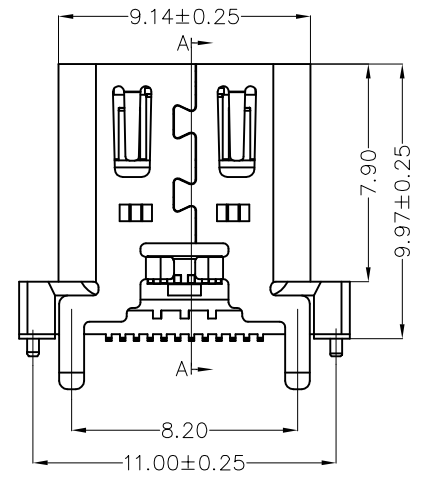
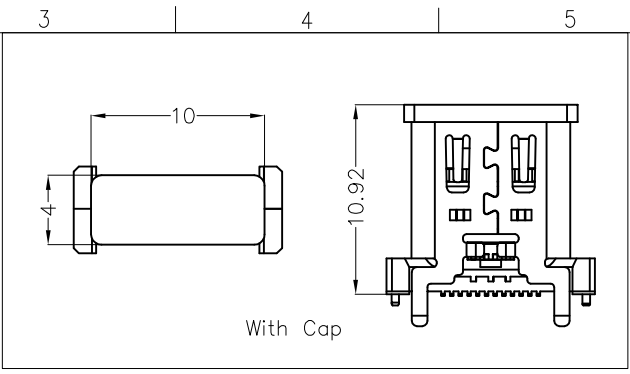
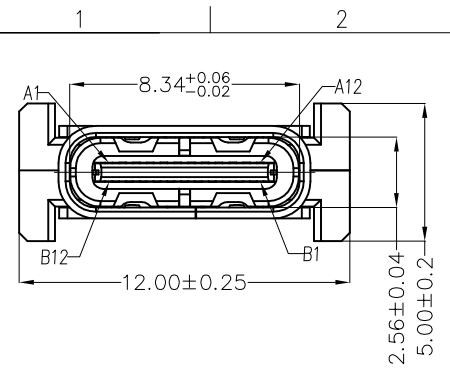
Current Rating: 5.0A AC(rms)/DC
Voltage Rating: 5.0V AC(rms)/DC
Contact Resistance: 50 mΩ Max
Insulation Resistance: 100 MΩ Min
Withstanding Voltage: 100V AC r.m.s
Operating Temperature: -25°C~+85°C

Mechanical

Durability: 10000 cycles
Mating force: 0.5~2.0KG.F
Retention force: 0.8~2.0KG.F

Material and plating

Housing: LCP (UL 94V-0)/Black
Contacts: Copper Alloy/Gold plated
MID Plate: Stainless Steel /Clear only
Shell: Stainless Steel/Nickel Plated



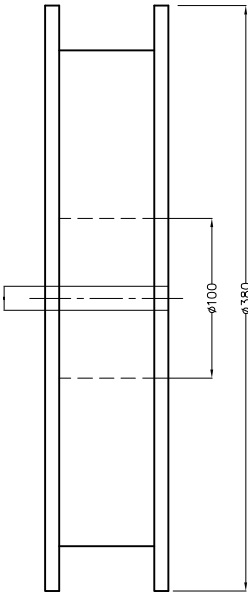
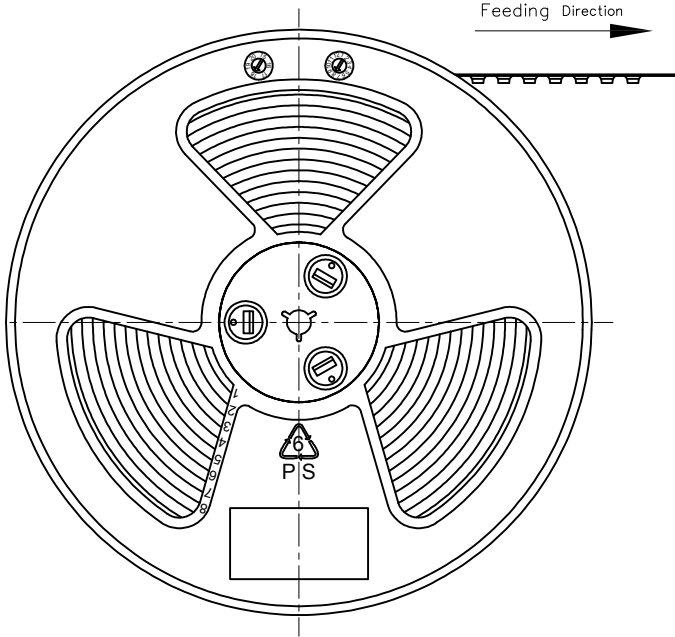
Pin Number	Signal Name	Pin Number	Signal Name
A1	GND	B12	GND
A2	SSTXp1	B11	SSRXp1
A3	SSTXn1	B10	SSRXn1
A4	VBUS	B9	VBUS
A5	CC1	B8	SBU2
A6	Dp1	B7	Dn2
A7	Dn1	B6	Dp2
A8	SBU1	B5	CC2
A9	VBUS	B4	VBUS
A10	SSRXn2	B3	SSTXn2
A11	SSRXp2	B2	SSTXp2
A12	GND	B1	GND

<p>THIRD ANGLE PROJECTION</p>	GENERAL TOLERANCES (UNLESS SPECIFIED)		APPROVE BY	DATE	PART NO. FUS679-FSSBKM	ITEM NO. FUS679
	X±0.30	X'±5'	FRANK	26/MAY/22		
	X.X±0.20	.X'±2'	CHECKED BY	DATE	TITLE	
	X.XX±0.15	.XX'±1'	CHERRY	26/MAY/22	USB Type C 180° Vertical Female(SMT)(3.1)	
SCALE 5:1	SIZE A4	X.XXX±0.10	.XXX'±0.5'	DRAWN BY	DATE	THIS DRAWING CONTAINS INFORMATION THAT IS PROPRIETARY TO TXGA INDUSTRIAL ELECTRONICS(S.Z)CO.,LTD AND SHOULD NOT BE USED WITHOUT WRITTEN PERMISSION
				MATT	26/MAY/22	REV 0 SHEET NO. 1/2



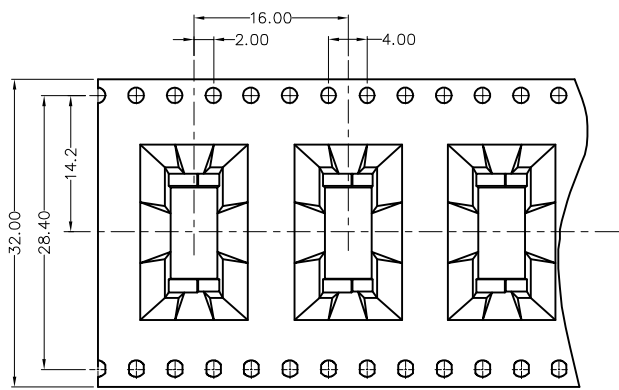
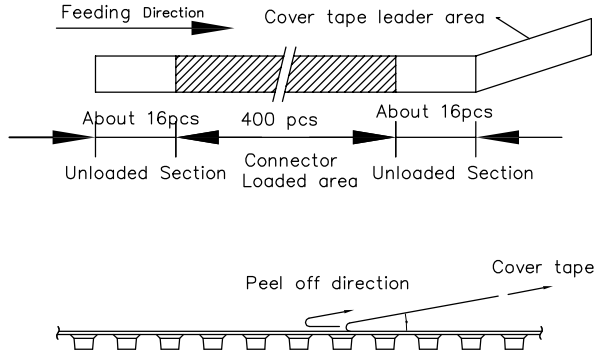
REV 0 SHEET NO. 1/2

REV	LOCATIONS	DESCRIPTION	DATE	REVISER	APPD

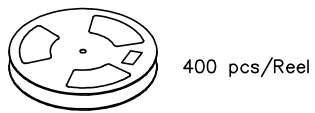


Note:

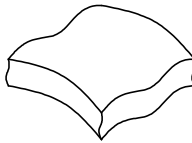
1. 10 sprocket hole cumulative tolerance ± 0.2
2. Carrier camber is within 1.0mm in 250mm
3. Material: Clear conductive polystyrene Alloy 100% recyclable
4. All dimensions meet EIA-481-3 requirements
5. Peel off force of cover tape & carrier tape: 20g~130g (0.2N~1.3N)
6. Component load per 10 reel: 400 pcs



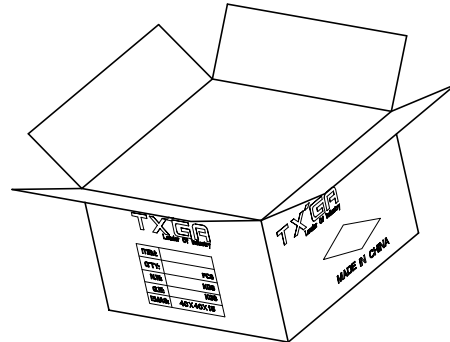
Feeding Direction



PE Bag



Drying agent/pcs



 THIRD ANGLE PROJECTION	GENERAL TOLERANCES (UNLESS SPECIFIED)		APPROVE BY	DATE	PART NO.	ITEM NO.	 Leader Of Industry
	X.±0.30	X.±5'	FRANK	26/MAY/22	FUS679-FSSBKM	FUS679	
DESIGN UNITS (Metric)	X.X±0.20	.X'±2'	CHECKED BY	DATE	TITLE		REV 0
SCALE	X.XX±0.15	.XX'±1'	CHERRY	26/MAY/22	USB C-type 180° Vertical Female(SMT)(3.1)		
5:1	X.XXX±0.10	.XXX'±0.5'	DRAWN BY	DATE	THIS DRAWING CONTAINS INFORMATION THAT IS PROPRIETARY TO TXGA INDUSTRIAL ELECTRONICS(S.Z)CO.,LTD AND SHOULD NOT BE USED WITHOUT WRITTEN PERMISSION		
SIZE			MATT	26/MAY/22			
A4							