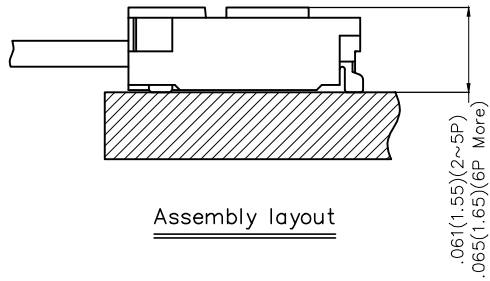


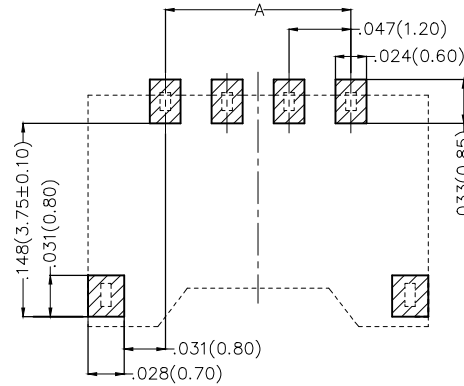
REV	LOCATIONS	DESCRIPTION	DATE	REVISER	APPD
1		Material-Resin changes	21/JUN/19	KATE	CHERRY

Electrical

Current Rating: 1.5A AC(rms)/DC
Voltage Rating: 50V AC(rms)/DC
Contact Resistance: 20 mΩ Max
Insulation Resistance: 100 MΩ MIN
Withstanding Voltage: 500V AC r.m.s
Temperature Range-Operating: -25°C ~ +85°C
Material and Plating
 Housing: PA9T (UL 94V-0)
Contact: Phosphor bronze/ Gold flash
Solder tab: Brass/ Tin plated

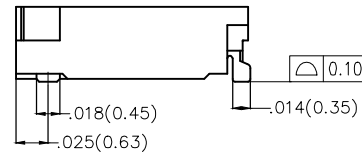
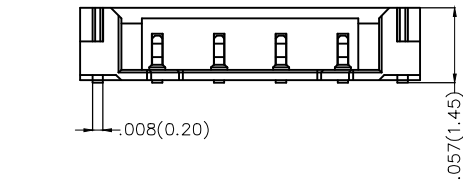
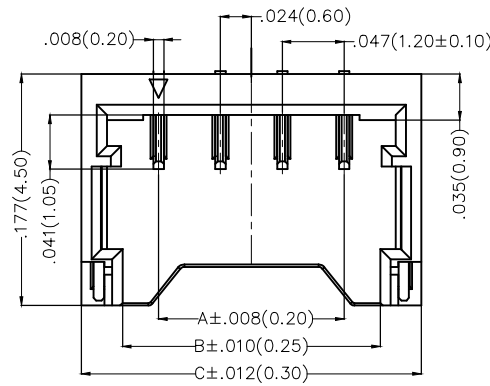


Assembly layout



Recommended P.C. Board Layout

General tolerances: ±.002(0.05)



Circuits (n)	Part No.	Dimensions(in/mm)		
		A	B	C
2	FWF12002-S02B15K6M	.047(1.20)	.102(2.60)	.165(4.20)
3	FWF12002-S03B15K6M	.094(2.40)	.150(3.80)	.212(5.40)
4	FWF12002-S04B15K6M	.141(3.60)	.197(5.00)	.260(6.60)
5	FWF12002-S05B15K6M	.189(4.80)	.244(6.20)	.307(7.80)
6	FWF12002-S06B15K6M	.236(6.00)	.291(7.40)	.354(9.00)

Ordering Information

FWF 120 02 - S XX B 1 5 K6 M
1 2 3 4 5 6 7 8 9 10

1 Category FWF-Wafer	2 Series Number 120-Pitch1.2mm	3 Distinction No. 02	4 Row Option S-Single Row	5 Circuits XX	6 Entry Angle B-90° Angle
7 Plating 1-Gold Plated	8 Material-Resin 5-PA9T	9 Color-Resin K6-Black	10 Packaging M-Reel		

	GENERAL TOLERANCES (UNLESS SPECIFIED)		APPROVE BY FRANK	DATE 20/JUN/17	PART NO. FWF12002-SXXB15K6M	ITEM NO. FWF12002	
	DESIGN UNITS Inch (metric)	X.±.012(0.30)	X.±5'	CHECKED BY CHERRY	DATE 20/JUN/17	TITLE Wire to Board (Wafer) Pitch 1.2mm 90° Angle (SMT)	
SCALE 5:1	SIZE A4	X.XX±.006(0.15)	.XX±1'	DRAWN BY LXF	DATE 20/JUN/17	THIS DRAWING CONTAINS INFORMATION THAT IS PROPRIETARY TO TXGA INDUSTRIAL ELECTRONICS(S.Z)CO.,LTD AND SHOULD NOT BE USED WITHOUT WRITTEN PERMISSION	
						REV 1	SHEET NO. 1/1