

1 2 3 4 5 6 7 8

REV	LOCATIONS	DESCRIPTION	DATE	REVISER	APPD
1	⚠	Material-Resin: Change LCP into PA9T	17/SEP/21	CHERRY	FRANK

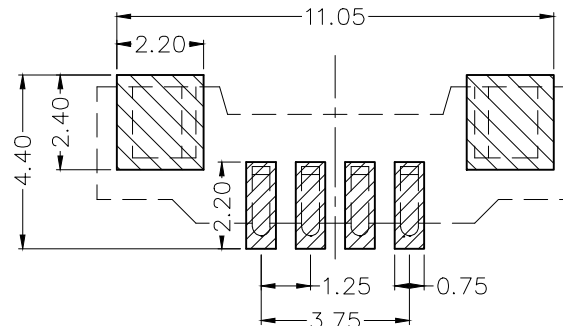
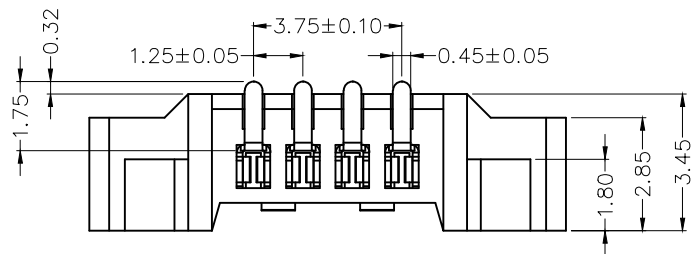
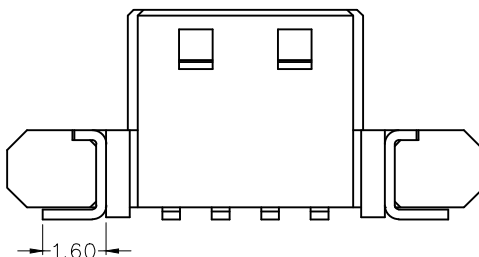
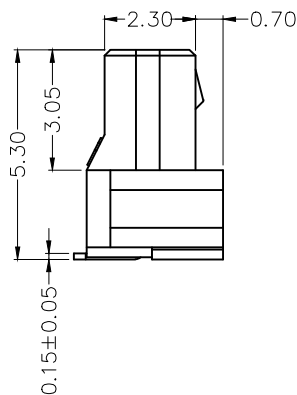
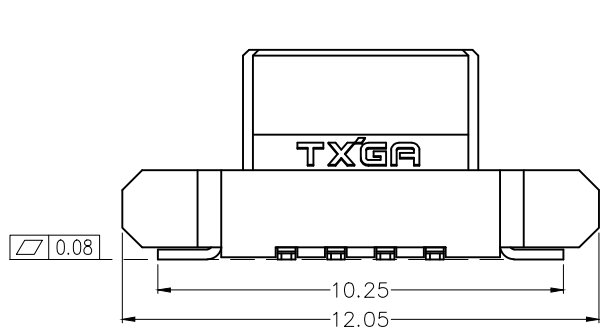
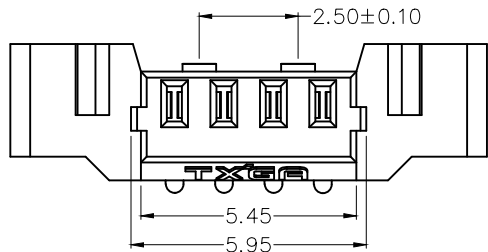
SPECIFICATIONS

Electrical

Current Rating: 1.0A AC(rms)/DC
 Voltage Rating: 125V AC(rms)/DC
 Contact Resistance: 20 mΩ Max
 Insulation Resistance: 100 MΩ Min
 Withstanding Voltage: 250V AC r.m.s
 Temperature Range-Operating: -40°C~+85°C

Material and Plating

⚠ Housing: PA9T (UL94 V-0)
 Terminal: Phosphor bronze/ Matte tin plated
 Solder: Phosphor bronze/ Bright tin plated



Recommended P.C.Board Layout
 General tolerances: ±0.05

A

B

C

D

E

F

A

B

C

D

E

F

1 2 3 4 5 6 7 8

<p>THIRD ANGLE PROJECTION</p>	GENERAL TOLERANCES (UNLESS SPECIFIED)		APPROVE BY	DATE	PART NO.	ITEM NO.	<p>Leader Of Industry</p>
	X. ±0.30	X.* ±5°	FRANK	02/DEC/20	FWF12520-S04S23NAM	FWF12520	
	X.X ±0.20	X.X* ±2°	CHECKED BY	DATE	TITLE		
	X.XX ±0.15	X.XX* ±1°	CHERRY	02/DEC/20	Board to Board (Wafer) Pitch 1.25mm 180° Vertical(SMT)		
SCALE	SIZE	X.XXX ±0.10	X.XXX* ±0.5°	DRAWN BY	DATE	REV 1 SHEET NO. 1/1	
1:1	A4			KATE	02/DEC/20	THIS DRAWING CONTAINS INFORMATION THAT IS PROPRIETARY TO TXGA INDUSTRIAL ELECTRONICS(S.Z)CO.,LTD AND SHOULD NOT BE USED WITHOUT WRITTEN PERMISSION	