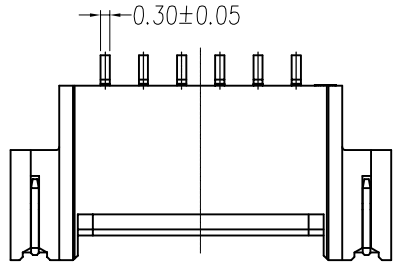


REV	LOCATIONS	DESCRIPTION	DATE	REVISER	APPD



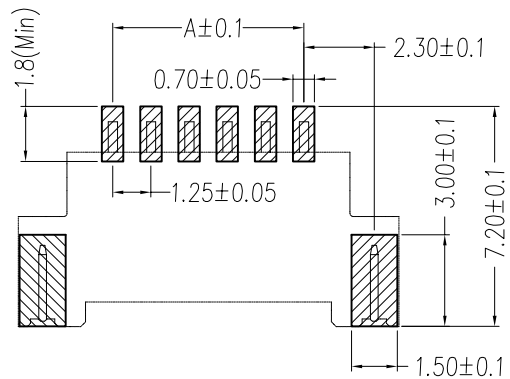
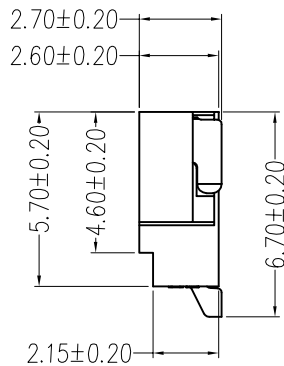
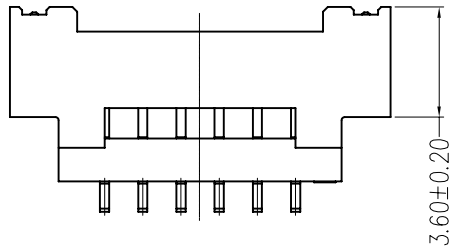
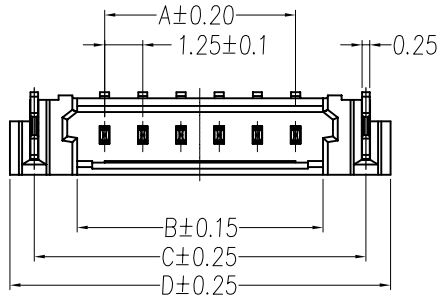
SPECIFICATIONS

Electrical

Current Rating: 1A AC/DC
 Voltage Rating: 150V AC/DC
 Contact Resistance: ≤20mΩ
 Insulation Resistance: 500 MΩ MIN
 Withstanding Voltage: 500V AC/minute
 Temperature Range-Operating: -40°C~+105°C

Material

Housing: LCP (UL94V-0), Natural
 Terminal: Copper Alloy, Tin-Plated
 Solder Tab: Copper Alloy, Tin-Plated
 Mates With Housing: FHG12510 Series



Recommended P.C.Board Layout

Circuits (n)	Part NO.	Dimensions			
		A	B	C	D
2	FWF12522-S02B23NAM	1.25	3.05	5.85	7.45
3	FWF12522-S03B23NAM	2.50	4.30	7.10	8.70
4	FWF12522-S04B23NAM	3.75	5.55	8.35	9.95
5	FWF12522-S05B23NAM	5.00	6.80	9.60	11.20
6	FWF12522-S06B23NAM	6.25	8.05	10.85	12.45
7	FWF12522-S07B23NAM	7.50	9.30	12.10	13.70
8	FWF12522-S08B23NAM	8.75	10.55	13.35	14.95
9	FWF12522-S09B23NAM	10.00	11.80	14.60	16.20
10	FWF12522-S10B23NAM	11.25	13.05	15.85	17.45
11	FWF12522-S11B23NAM	12.50	14.30	17.10	18.70
12	FWF12522-S12B23NAM	13.75	15.55	18.35	19.95
13	FWF12522-S13B23NAM	15.00	16.80	19.60	21.20
14	FWF12522-S14B23NAM	16.25	18.05	20.85	22.45
15	FWF12522-S15B23NAM	17.50	19.30	22.10	23.70
16	FWF12522-S16B23NAM	18.75	20.55	23.35	24.95

Ordering Information

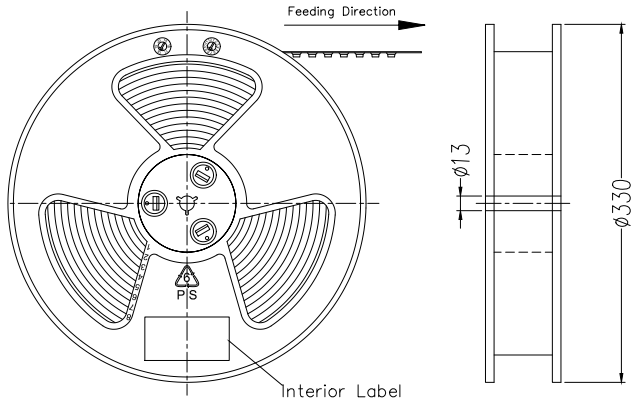
FWF 125 22 - S XX B 2 3 NA M
 1 2 3 4 5 6 7 8 9 10

1 Category FWF-Wafer	2 Series Number 125-Pitch1.25mm	3 Distinction No. 22	4 Row Option S-Single row	5 Circuits XX
6 Entry Angle B-90° Angle	7 Plating 2-Tin Plated	8 Material-Resin 3-LCP	9 Color-Resin NA-Natural	10 Packaging M-Reel

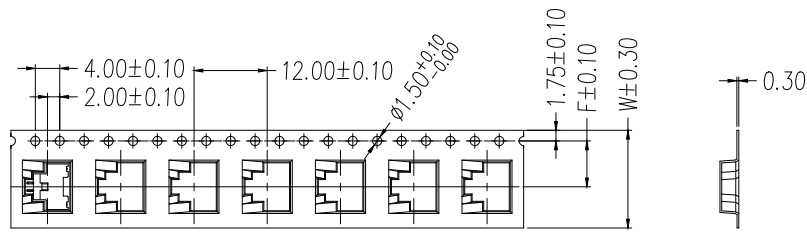
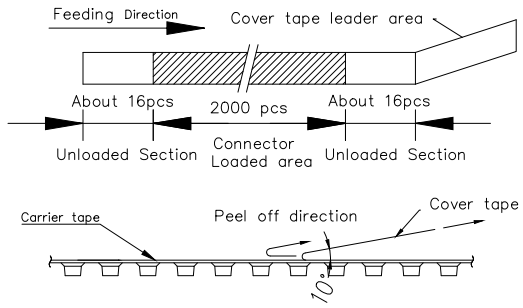
THIRD ANGLE PROJECTION	GENERAL TOLERANCES (UNLESS SPECIFIED)		APPROVE BY LEO	DATE 26/OCT/21	PART NO. FWF12522-SXXB23NAM	ITEM NO. FWF12522	Building Technology Cornerstone REV 0 SHEET NO. 1/2
	DESIGN UNITS mm	X. ±0.30 X.* ±5°	CHECKED BY GISELLE	DATE 26/OCT/21	TITLE Wire to Board Pitch 1.25mm(Wafer)		
SCALE 5:1	SIZE A4	X.XX ±0.15 X.XX* ±1°	DRAWN BY PYD	DATE 26/OCT/21	THIS DRAWING CONTAINS INFORMATION THAT IS PROPRIETARY TO TXGA INDUSTRIAL ELECTRONICS(S.Z)CO.,LTD AND SHOULD NOT BE USED WITHOUT WRITTEN PERMISSION		
		X.XXX ±0.10 X.XXX* ±0.5°					

REV	LOCATIONS	DESCRIPTION	DATE	REVISER	APPD

A
B
C
D
E
F

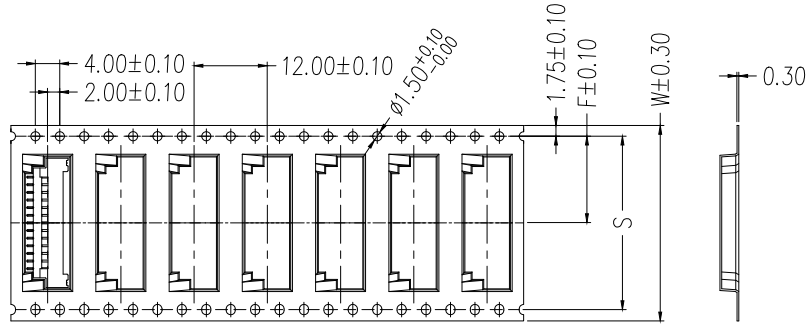


- 10 sprocket hole cumulative tolerance ± 0.2
- Carrier camber is within 1.0mm in 250mm
- Material: Clear conductive polystyrene Alloy 100% recyclable
- All dimensions meet EIA-481-3 requirements
- Peel off force of cover tape & carrier tape: 20g~130g (0.2N~1.3N)
- Component load per 13" reel: 2000 pcs

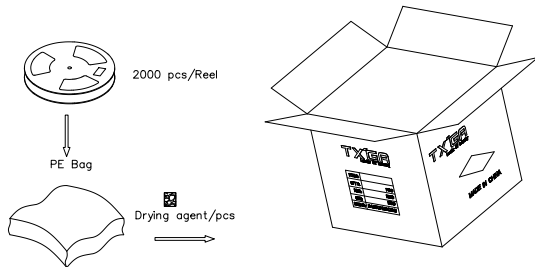


Circuits: 2~8

Circuits (n)	Dimensions		
	W	S	F
2~3	16	—	7.5
4~8	24	—	11.5
9~13	32	28.4	14.2
13~16	44	40.4	20.2



Circuits: 9~16



Feeding Direction →

 THIRD ANGLE PROJECTION DESIGN UNITS mm SCALE 5:1 SIZE A4	GENERAL TOLERANCES (UNLESS SPECIFIED)		APPROVE BY LEO	DATE 26/OCT/21	PART NO. FWF12522-SXXB23NAM	ITEM NO. FWF12522	 Building Technology Cornerstone
	X. ±0.30	X.* ±5'	CHECKED BY GISELLE	DATE 26/OCT/21	TITLE Wire to Board Pitch 1.25mm(Wafer)		
	X.X ±0.20	X.X' ±2'	DRAWN BY PYD	DATE 26/OCT/21	THIS DRAWING CONTAINS INFORMATION THAT IS PROPRIETARY TO TXGA INDUSTRIAL ELECTRONICS(S.Z)CO.,LTD AND SHOULD NOT BE USED WITHOUT WRITTEN PERMISSION		
	X.XX ±0.15	X.XX' ±1'					