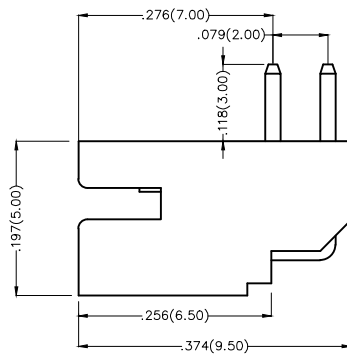
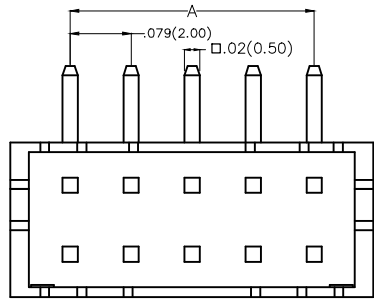


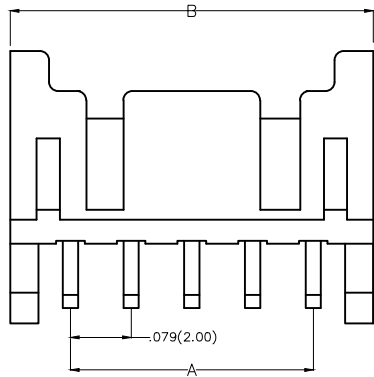
REV	LOCATIONS	DESCRIPTION	DATE	REVISER	APPD



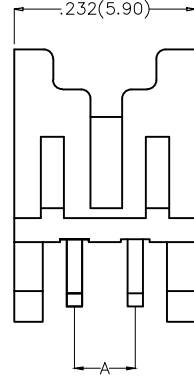
**Electrical**

Current Rating: 3.0A AC(rms)/DC  
Voltage Rating: 250V AC(rms)/DC  
Contact Resistance: 10 mΩ Max  
Insulation Resistance: 1000 MΩ MIN  
Withstanding Voltage: 800V AC r.m.s  
Temperature Range—Operating: -25°C~+85°C  
**Material and Plating**  
Housing: PA46( UL 94V-0)  
Contact Pin: Brass  
Plating: Tin Plated

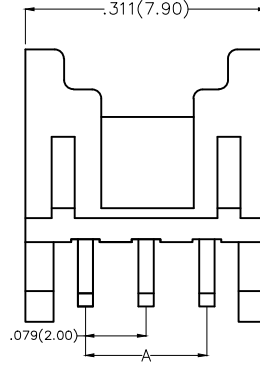
2x4—2x20Circuits



2x2Circuits



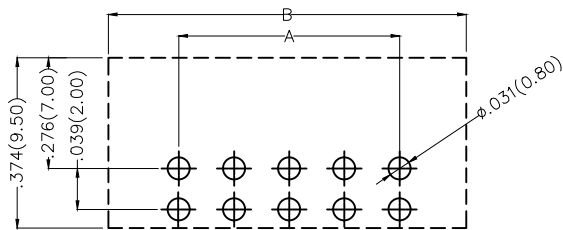
2x3Circuits



**Ordering Information**

FWF 200 06 — D XX B 2 2 W5 B  
1 2 3 4 5 6 7 8 9 10

1	Category FWF—Wafer	2	Series Number 200—Pitch2.0mm	3	Distinction No. 06	4	Row Option D—Double Row	5	Circuits XX	6	Entry Angle B—90° Angle
7	Plating 2—Tin Plated	8	Material—Resin 2—PA46	9	Color—Resin W5—White	10	Packaging B—PE Bag				



Recommended P.C.Board Layout

 <b>THIRD ANGLE PROJECTION</b>	GENERAL TOLERANCES (UNLESS SPECIFIED)		APPROVE BY FRANK	DATE 18/JUN/13	PART NO. FWF20006—DXXB22W5B	ITEM NO. FWF20006	 <b>TXGA</b> Leader Of Industry	
	X.±.012(0.30)	X.±5'	CHECKED BY JACOB	DATE 18/JUN/13	TITLE Wire to Board (Wafer) Pitch 2.0mm 90° Angl (DIP)			REV 0
	DESIGN UNITS Inch (metric)	X.XX±.008(0.20)	.X'±2'	DRAWN BY CHERRY	DATE 18/JUN/13	THIS DRAWING CONTAINS INFORMATION THAT IS PROPRIETARY TO TXGA INDUSTRIAL ELECTRONICS(S.Z)CO.,LTD AND SHOULD NOT BE USED WITHOUT WRITTEN PERMISSION		
	SCALE 5:1	SIZE A4	X.XX±.006(0.15)	.XX±1'	X.XXX±.004(0.10)	.XXX±0.5'		

1 | 2 | 3 | 4 | 5 | 6 | 7 | 8

REV	LOCATIONS	DESCRIPTION	DATE	REVISER	APPD

A

A

B

B

C

C

D

D

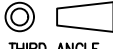

E

E

F

F

Circuits (n)	Part No.	Dimensions(in/mm)		Circuits (n)	Part No.	Dimensions(in/mm)	
		A	B			A	B
4	FWF20006-D04B22W5B	.079(2.00)	.232(5.90)	24	FWF20006-D24B22W5B	.866(22.00)	1.020(25.90)
6	FWF20006-D06B22W5B	.157(4.00)	.311(7.90)	26	FWF20006-D26B22W5B	.945(24.00)	1.098(27.90)
8	FWF20006-D08B22W5B	.236(6.00)	.390(9.90)	28	FWF20006-D28B22W5B	1.024(26.00)	1.177(29.90)
10	FWF20006-D10B22W5B	.315(8.00)	.469(11.90)	30	FWF20006-D30B22W5B	1.102(28.00)	1.256(31.90)
12	FWF20006-D12B22W5B	.394(10.00)	.547(13.90)	32	FWF20006-D32B22W5B	1.181(30.00)	1.335(33.90)
14	FWF20006-D14B22W5B	.472(12.00)	.626(15.90)	34	FWF20006-D34B22W5B	1.260(32.00)	1.413(35.90)
16	FWF20006-D16B22W5B	.551(14.00)	.705(17.90)	36	FWF20006-D36B22W5B	1.339(34.00)	1.492(37.90)
18	FWF20006-D18B22W5B	.630(16.00)	.783(19.90)	38	FWF20006-D38B22W5B	1.417(36.00)	1.571(39.90)
20	FWF20006-D20B22W5B	.709(18.00)	.862(21.90)	40	FWF20006-D40B22W5B	1.496(38.00)	1.650(41.90)
22	FWF20006-D22B22W5B	.787(20.00)	.941(23.90)				

 THIRD ANGLE PROJECTION	GENERAL TOLERANCES (UNLESS SPECIFIED)		APPROVE BY	DATE	PART NO.	ITEM NO.	 Leader Of Industry
	X.±.012(0.30)	X.±5'	FRANK	18/JUN/13	FWF20006-DXXB22W5B	FWF20006	
	X.X±.008(0.20)	.X'±2'	CHECKED BY	DATE	TITLE		
	X.XX±.006(0.15)	.XX'±1'	JACOB	18/JUN/13	Wire to Board (Wafer) Pitch 2.0mm 90° Angled (DIP)	REV 0	
SCALE	SIZE	X.XXX±.004(0.10)	.XXX'±0.5'	DRAWN BY	DATE	THIS DRAWING CONTAINS INFORMATION THAT IS PROPRIETARY TO TXGA INDUSTRIAL ELECTRONICS(S.Z)CO.,LTD AND SHOULD NOT BE USED WITHOUT WRITTEN PERMISSION	
5:1	A4			CHERRY	18/JUN/13		

1 | 2 | 3 | 4 | 5 | 6 | 7 | 8