

1 2 3 4 5 6 7 8

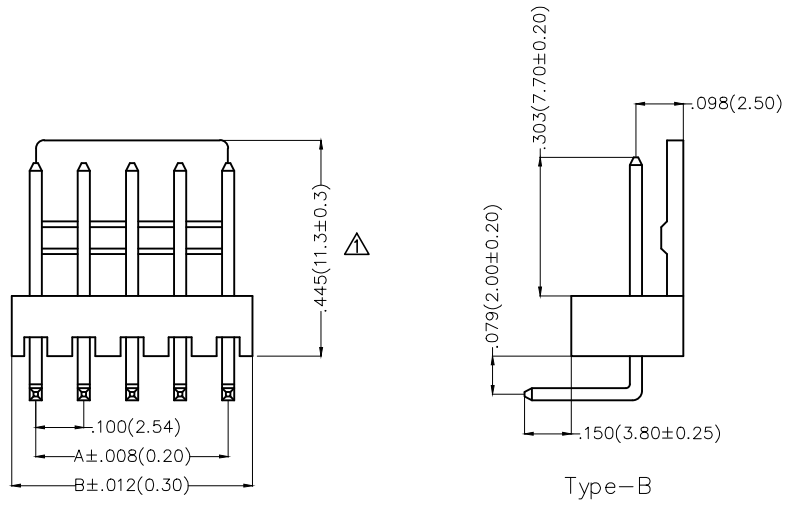
REV	LOCATIONS	DESCRIPTION	DATE	REVISER	APPD
1	△	Dimensions change	19/JUL/22	MATT	CHERRY
2	△	Flammability Change	29/MAR/24	KATE	LEO

Electrical

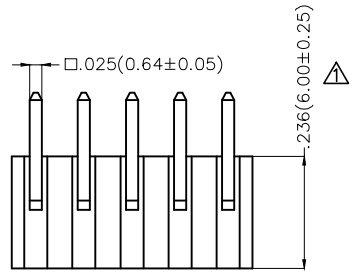
Current Rating: 2.5A AC(rms)/DC
 Voltage Rating: 250V AC(rms)/DC
 Contact Resistance: 20 mΩ Max
 Insulation Resistance: 1000 MΩ MIN
 Withstanding Voltage: 1000V AC r.m.s
 Temperature Range—Operating: -25°C~+85°C

Material and Plating

Housing: PA66(UL 94V-0) △
 Contact Pin: Brass
 Plating: Tin Plated



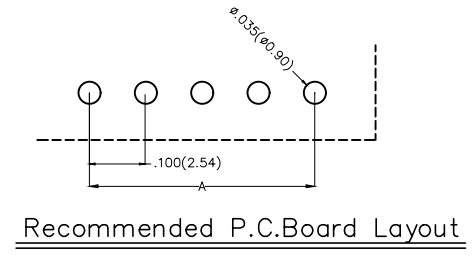
Type-B




Ordering Information

FWF 254 02 — S XX B 2 2 W5 B — B
 1 2 3 4 5 6 7 8 9 10 11

1	Category FWF—Wafer	2	Series Number 254—Pitch2.54mm	3	Distinction No. 02	4	Row Option S—Single Row	5	Circuits XX	6	Entry Angle B—90° Angle
7	Plating 2—Tin Plated	8	Material—Resin 2—PA66	9	Color—Resin W5—Natural	10	Packaging B—PE Bag	11	Type B—Type B		



THIRD ANGLE PROJECTION	GENERAL TOLERANCES (UNLESS SPECIFIED)		APPROVE BY FRANK	DATE 8/JUL/13	PART NO. FWF25402—SXXB22W5B—B	ITEM NO. FWF25402	 Leader Of Industry
	DESIGN UNITS Inch (metric)	X.±.012(0.30) X.X±.008(0.20)	X:±5° .X'±2'	CHECKED BY JACOB	DATE 8/JUL/13	TITLE Wire to Board (Wafer) Pitch 2.54mm 90° Angl (DIP)	
SCALE 5:1	SIZE A4	X.XX±.006(0.15) X.XXX±.004(0.10)	.XX'±1° .XXX'±0.5°	DRAWN BY CHERRY	DATE 8/JUL/13	THIS DRAWING CONTAINS INFORMATION THAT IS PROPRIETARY TO TXGA INDUSTRIAL ELECTRONICS(S.Z)CO.,LTD AND SHOULD NOT BE USED WITHOUT WRITTEN PERMISSION	

1 2 3 4 5 6 7 8

1 | 2 | 3 | 4 | 5 | 6 | 7 | 8

REV	LOCATIONS	DESCRIPTION	DATE	REVISER	APPD

A

B

C

D

E

F

A

B

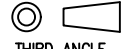

C

D

E

F

Circuits (n)	Part No.	Dimensions(in/mm)	
		A	B Δ
2	FWF25402-S02B22W5B-B	.100(2.54)	.202(5.14)
3	FWF25402-S03B22W5B-B	.200(5.08)	.302(7.68)
4	FWF25402-S04B22W5B-B	.300(7.62)	.403(10.22)
5	FWF25402-S05B22W5B-B	.400(10.16)	.502(12.76)
6	FWF25402-S06B22W5B-B	.500(12.70)	.602(15.30)
7	FWF25402-S07B22W5B-B	.600(15.24)	.702(17.84)
8	FWF25402-S08B22W5B-B	.700(17.78)	.802(20.38)
9	FWF25402-S09B22W5B-B	.800(20.32)	.902(22.92)
10	FWF25402-S10B22W5B-B	.900(22.86)	1.002(25.46)
11	FWF25402-S11B22W5B-B	1.000(25.40)	1.102(28.00)
12	FWF25402-S12B22W5B-B	1.100(27.94)	1.202(30.54)

 THIRD ANGLE PROJECTION	GENERAL TOLERANCES (UNLESS SPECIFIED)		APPROVE BY FRANK	DATE 8/JUL/13	PART NO. FWF25402-SXXB22W5B-B	ITEM NO. FWF25402	 Leader Of Industry	
	X.±.012(0.30)	X.±5'	CHECKED BY JACOB	DATE 8/JUL/13	TITLE Wire to Board (Wafer) Pitch 2.54mm 90° Angl el (DIP)			REV 2
	DESIGN UNITS Inch (metric)	X.X±.008(0.20)	.X'±2'	DRAWN BY CHERRY	DATE 8/JUL/13	THIS DRAWING CONTAINS INFORMATION THAT IS PROPRIETARY TO TXGA INDUSTRIAL ELECTRONICS(S.Z)CO.,LTD AND SHOULD NOT BE USED WITHOUT WRITTEN PERMISSION		
	SCALE 5:1	SIZE A4	X.XX±.006(0.15)	.XX'±1'				
		X.XXX±.004(0.10)	.XXX'±0.5'					

1 | 2 | 3 | 4 | 5 | 6 | 7 | 8