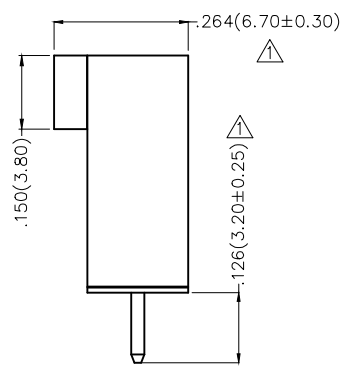
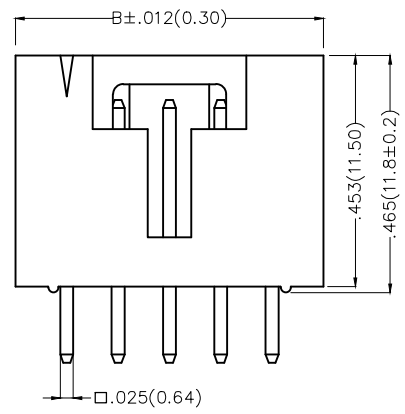
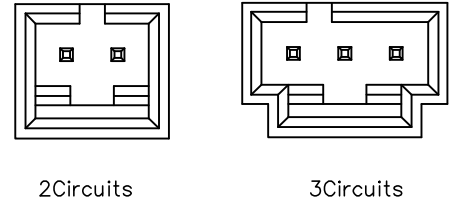
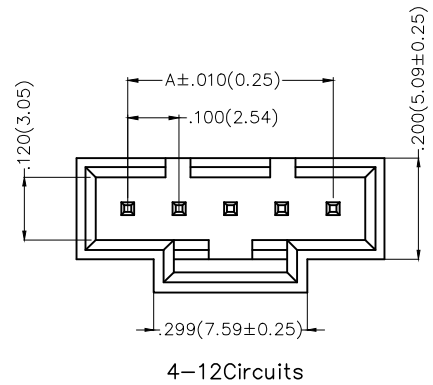


REV	LOCATIONS	DESCRIPTION	DATE	REVISER	APPD
1	△	Dimensions: Change 6.80±0.25 into 6.70±0.30mm, Change 3.4 into 3.2±0.25mm	05/JUN/17	KATE	CHERRY



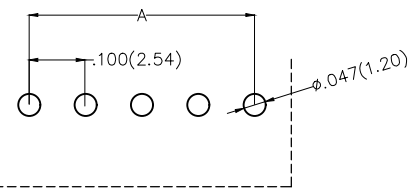
**Electrical**  
 Current Rating: 2.5A AC(rms)/DC  
 Voltage Rating: 250V AC(rms)/DC  
 Contact Resistance: 20 mΩ Max  
 Insulation Resistance: 1000 MΩ MIN  
 Withstanding Voltage: 800V AC r.m.s  
 Temperature Range-Operating: -25°C~+85°C  
**Material and Plating**  
 Housing: PBT UL94V-0  
 Pin: Brass  
 Plating: Gold plated

Circuits (n)	Part No.	Dimensions(in/mm)	
		A	B
2	FWF25404-S02S12K6B	.100(2.54)	.299(7.59)
3	FWF25404-S03S12K6B	.200(5.08)	.399(10.13)
4	FWF25404-S04S12K6B	.300(7.62)	.499(12.67)
5	FWF25404-S05S12K6B	.400(10.16)	.599(15.21)
6	FWF25404-S06S12K6B	.500(12.70)	.699(17.75)
7	FWF25404-S07S12K6B	.600(15.24)	.799(20.29)
8	FWF25404-S08S12K6B	.700(17.78)	.899(22.83)
9	FWF25404-S09S12K6B	.800(20.32)	.999(25.37)
10	FWF25404-S10S12K6B	.900(22.86)	1.099(27.91)
11	FWF25404-S11S12K6B	1.000(25.40)	1.199(30.45)
12	FWF25404-S12S12K6B	1.100(27.94)	1.299(32.99)


**Ordering Information**

FWF 254 04 - S XX S 1 2 K6 B  
 1 2 3 4 5 6 7 8 9 10

1   Category FWF-Wafer	2   Series Number 254-Pitch2.54mm	3   Distinction No. 04	4   Row Option S-Single Row	5   Circuits XX
6   Entry Angle S-180° Vertical	7   Finish 1-Gold plated	8   Material-Resin 2-PBT	9   Color-Resin K6-Black	10   Packaging B-PE Bag



Recommended P.C.Board Layout

THIRD ANGLE PROJECTION		GENERAL TOLERANCES (UNLESS SPECIFIED)		APPROVE BY	DATE	PART NO.	ITEM NO.	 Leader Of Industry
DESIGN UNITS Inch (metric)	X.±.012(0.30)	X.±5°	FRANK	8/JUL/13	FWF25404-SXXS12K6B	FWF25404		
	X.XX±.008(0.20)	.XX±2°	CHECKED BY	DATE	TITLE		REV 1	
	X.XX±.006(0.15)	.XX±1°	JACOB	8/JUL/13	Wire to Board (Wafer) Pitch 2.54mm 180° Vertical (DIP)		SHEET NO. 1/1	
SCALE 5:1	SIZE A4	X.XXX±.004(0.10)	.XXX±0.5°	DRAWN BY	DATE	THIS DRAWING CONTAINS INFORMATION THAT IS PROPRIETARY TO TXGA INDUSTRIAL ELECTRONICS(S.Z)CO.,LTD AND SHOULD NOT BE USED WITHOUT WRITTEN PERMISSION		
				CHERRY	8/JUL/13			