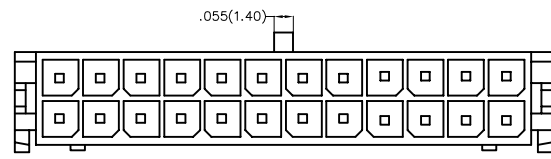
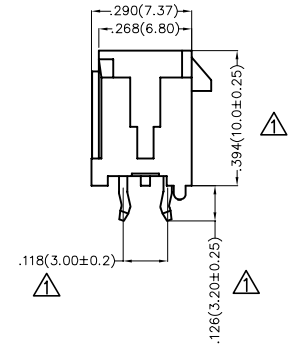
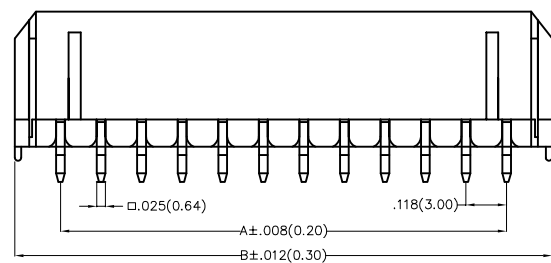


1 2 3 4 5 6 7 8

REV	LOCATIONS	DESCRIPTION	DATE	REVISOR	APPD
1	△	Change the material and dimensions	25/FEB/22	MATT	CHERRY

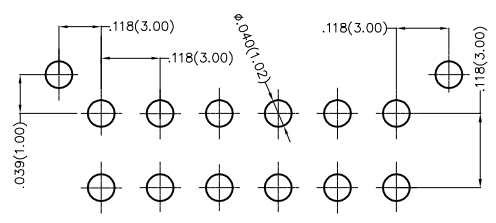


Electrical
 Current Rating: 5.0A AC(rms)/DC
 Voltage Rating: 250V AC(rms)/DC
 Contact Resistance: 10 mΩ Max
 Insulation Resistance: 1000 MΩ MIN
 Withstanding Voltage: 1500V AC r.m.s
 Temperature Range—Operating: -40°C~+105°C
 Material and Plating
 △ Housing: PA9T(UL 94V-0)
 Contact Pin: Brass
 Plating: Tin Plated



Ordering Information

FWF 300 01 — D XX S 2 2 K6 X
 1 2 3 4 5 6 7 8 9 10



Recommended P.C.Board Layout

1	Category FWF—Wafer	2	Series Number 300—Pitch 3.0mm	3	Distinction No. 01	4	Row Option Double Row	5	Circuits XX	6	Entry Angle S—180° Vertical
7	Plating 2—Tin Plated	8	Material—Resin 2—PA9T △	9	Color—Resin K6—Black	10	Packaging B—PE Bag K—Tray				

 THIRD ANGLE PROJECTION	GENERAL TOLERANCES (UNLESS SPECIFIED)		APPROVE BY FRANK	DATE 01/JUL/13	PART NO. FWF30001—DXXS22K6X	ITEM NO. FW30001	 Leader Of Industry	
	X±.012(0.30)	X'±5'	CHECKED BY CHERRY	DATE 01/JUL/13	TITLE Wire to Board (Wafer) Pitch 3.0mm 180° Vertical (DIP)			REV 1
DESIGN UNITS Inch (metric)	X.XX±.008(0.20)	.X'±2'	DRAWN BY JACOB	DATE 01/JUL/13	THIS DRAWING CONTAINS INFORMATION THAT IS PROPRIETARY TO TXGA INDUSTRIAL ELECTRONICS(S.Z)CO.,LTD AND SHOULD NOT BE USED WITHOUT WRITTEN PERMISSION			
SCALE 5:1	SIZE A4	X.XX±.006(0.15)						
		X.XXX±.004(0.10)						

1 2 3 4 5 6 7 8

1 2 3 4 5 6 7 8

REV	LOCATIONS	DESCRIPTION	DATE	REVISER	APPD

A

B

C

D

E

F

A

B

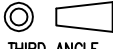

C

D

E

F

Circuits (n)	Part No.	Dimensions(in/mm)	
		A	B
2	FWF30001-D02S22K6X	—	.264(6.70)
4	FWF30001-D04S22K6X	.118(3.00)	.382(9.70)
6	FWF30001-D06S22K6X	.236(6.00)	.500(12.70)
8	FWF30001-D08S22K6X	.354(9.00)	.618(15.70)
10	FWF30001-D10S22K6X	.472(12.00)	.736(18.70)
12	FWF30001-D12S22K6X	.591(15.00)	.854(21.70)
14	FWF30001-D14S22K6X	.709(18.00)	.969(24.60)
16	FWF30001-D16S22K6X	.827(21.00)	1.091(27.70)
18	FWF30001-D18S22K6X	.945(24.00)	1.209(30.70)
20	FWF30001-D20S22K6X	1.063(27.00)	1.327(33.70)
22	FWF30001-D22S22K6X	1.181(30.00)	1.445(36.70)
24	FWF30001-D24S22K6X	1.299(33.00)	1.563(39.70)

 THIRD ANGLE PROJECTION	GENERAL TOLERANCES (UNLESS SPECIFIED)		APPROVE BY FRANK	DATE 01/JUL/13	PART NO. FWF30001-DXXS22K6B	ITEM NO. FW30001	 Leader Of Industry	
	X.±.012(0.30)	X.±5'	CHECKED BY CHERRY	DATE 01/JUL/13	TITLE Wire to Board (Wafer) Pitch 3.0mm 180° Vertical (DIP)			REV 1 SHEET NO. 2/2
	X.X±.008(0.20)	.X'±2'		DRAWN BY JACOB	DATE 01/JUL/13	THIS DRAWING CONTAINS INFORMATION THAT IS PROPRIETARY TO TXGA INDUSTRIAL ELECTRONICS(S.Z)CO.,LTD AND SHOULD NOT BE USED WITHOUT WRITTEN PERMISSION		
	DESIGN UNITS Inch (metric)	X.XX±.006(0.15)	.XX'±1'					
SCALE 5:1	SIZE A4	X.XXX±.004(0.10)	.XXX'±0.5'					

1 2 3 4 5 6 7 8