

REV	LOCATIONS	DESCRIPTION	DATE	REVISER	APPD

A

B

C

D

E

F

A

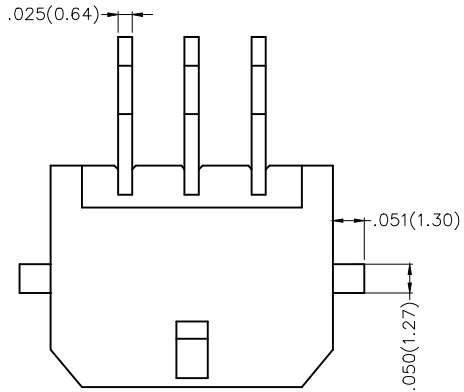
B

C

D

E

F

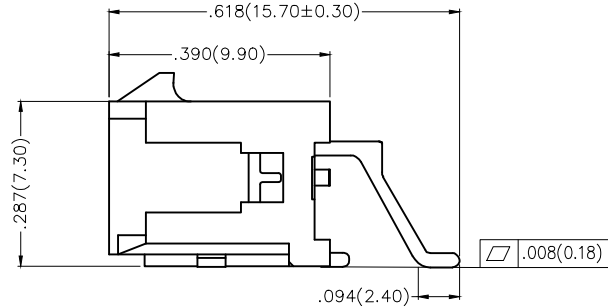
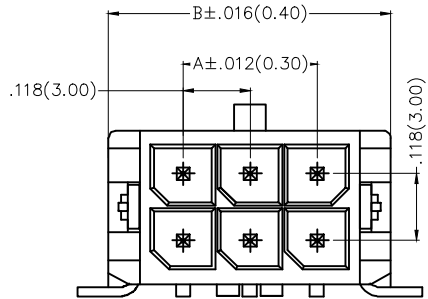


Electrical

Current Rating: 5.0A AC(rms)/DC  
 Voltage Rating: 250V AC(rms)/DC  
 Contact Resistance: 10 mΩ Max  
 Insulation Resistance: 1000 MΩ MIN  
 Withstanding Voltage: 1500V AC r.m.s  
 Temperature Range—Operating: -25°C~+85°C

Material and Plating

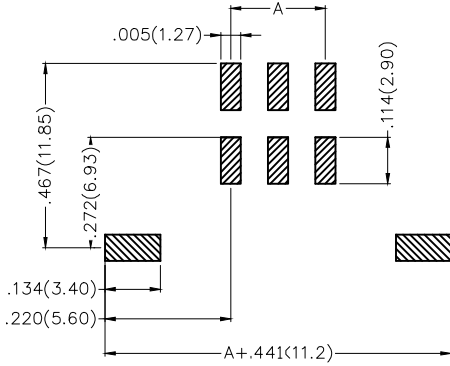
Housing: LCP( UL 94V-0)  
 Contact Pin: Brass/ Tin Plated  
 Solder tab: Brass/ Tin Plated



Ordering Information

FWF 300 22 — D XX B 2 3 K6 M  
 1 2 3 4 5 6 7 8 9 10

1	Category FWF—Wafer	2	Series Number 300—Pitch 3.0mm	3	Distinction No. 22	4	Row Option Double Row	5	Circuits XX	6	Entry Angle B—90° Angle
7	Plating 2—Tin Plated	8	Material—Resin 3—LCP	9	Color—Resin K6—Black	10	Packaging M—Reel				



Recommended P.C.Board Layout

 THIRD ANGLE PROJECTION	GENERAL TOLERANCES (UNLESS SPECIFIED)		APPROVE BY FRANK	DATE 18/JUN/13	PART NO. FWF30022-DXXB23K6M	ITEM NO. FWF30022	 Leader Of Industry	
	X.±.012(0.30)	X.±5'	CHECKED BY CHERRY	DATE 18/JUN/13	TITLE Wire to Board (Wafer) Pitch 3.0mm 90° Angled (SMT)			REV 0
DESIGN UNITS Inch (metric)	X.X±.008(0.20)	.X'±2'	DRAWN BY KEVIN	DATE 18/JUN/13	THIS DRAWING CONTAINS INFORMATION THAT IS PROPRIETARY TO TXGA INDUSTRIAL ELECTRONICS(S.Z)CO.,LTD AND SHOULD NOT BE USED WITHOUT WRITTEN PERMISSION			
SCALE 5:1	SIZE A4	X.XX±.006(0.15)	.XX'±1'					
		X.XXX±.004(0.10)	.XXX'±0.5'					

1 2 3 4 5 6 7 8

REV	LOCATIONS	DESCRIPTION	DATE	REVISER	APPD

A

B



C

D

E

F

Circuits (n)	Part No.	Dimensions(in/mm)		Circuits (n)	Part No.	Dimensions(in/mm)	
		A	B			A	B
2	FWF30022-D02B23K6M	-	.262(6.65)	14	FWF30022-D14B23K6M	.709(18.00)	.970(24.65)
4	FWF30022-D04B23K6M	.118(3.00)	.380(9.65)	16	FWF30022-D16B23K6M	.827(21.00)	1.089(27.65)
6	FWF30022-D06B23K6M	.236(6.00)	.498(12.65)	18	FWF30022-D18B23K6M	.945(24.00)	1.207(30.65)
8	FWF30022-D08B23K6M	.354(9.00)	.616(15.65)	20	FWF30022-D20B23K6M	1.063(27.00)	1.325(33.65)
10	FWF30022-D10B23K6M	.472(12.00)	.734(18.65)	22	FWF30022-D22B23K6M	1.181(30.00)	1.443(36.65)
12	FWF30022-D12B23K6M	.591(15.00)	.852(21.65)	24	FWF30022-D24B23K6M	1.299(33.00)	1.561(39.65)

 THIRD ANGLE PROJECTION	GENERAL TOLERANCES (UNLESS SPECIFIED)		APPROVE BY FRANK	DATE 18/JUN/13	PART NO. FWF30022-DXXB23K6M	ITEM NO. FWF30022	 Leader Of Industry
	DESIGN UNITS Inch (metric)	X.±.012(0.30) X.X±.008(0.20) X.XX±.006(0.15) X.XXX±.004(0.10)	X.±5' .X'±2' .XX'±1' .XXX'±0.5'	CHECKED BY CHERRY	DATE 18/JUN/13	TITLE Wire to Board (Wafer) Pitch 3.0mm 90° Angled (SMT)	
SCALE 5:1	SIZE A4	DRAWN BY KEVIN		DATE 18/JUN/13	THIS DRAWING CONTAINS INFORMATION THAT IS PROPRIETARY TO TXGA INDUSTRIAL ELECTRONICS(S.Z)CO.,LTD AND SHOULD NOT BE USED WITHOUT WRITTEN PERMISSION		

1 2 3 4 5 6 7 8