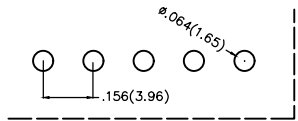
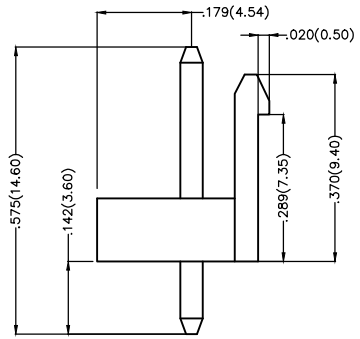
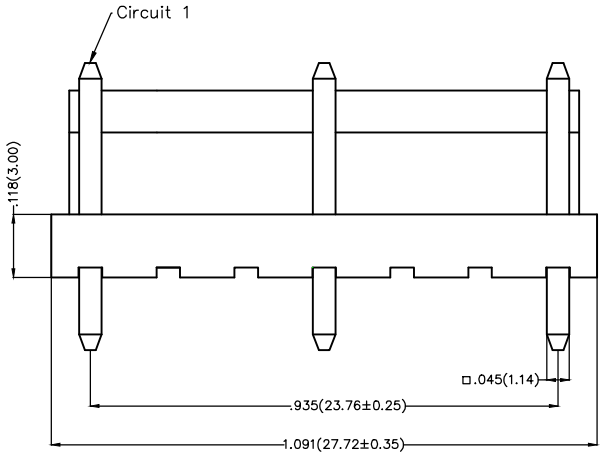
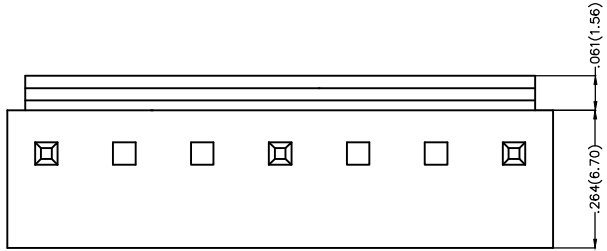


1 2 3 4 5 6 7 8

REV	LOCATIONS	DESCRIPTION	DATE	REVISER	APPD



Recommended P.C.Board Layout

Ordering Information

FWF	396	11	—	S	07	S	2	2	W1	B
1	2	3	4	5	6	7	8	9	10	

1 Series Name FWF-Wafer	2 Series Number 396-Pitch 3.96mm	3 Distinction No. 11	4 Contact Alignment S-Single Row	5 Circuits 07
6 Entry Type S-Top entry type	7 Plating 2-Tin Plated All	8 Plastic 2-PA66	9 Plastic Colour W1-White	10 Packaging B-PE Bag

SPECIFICATIONS

Electrical
 Current Rating: 7A AC(rms)/DC
 Voltage Rating: 250V AC(rms)/DC
 Contact Resistance: 20 mΩ Max
 Insulation Resistance: 1000 MΩ MIN
 Withstanding Voltage: 1500V AC r.m.s
 Temperature Range-Operating: -25°C ~ +85°C

Material and Plating
 Housing: Thermoplastic
 Pin: Brass: Tin-Plated/Gold-Flash

<p>THIRD ANGLE PROJECTION</p>	GENERAL TOLERANCES (UNLESS SPECIFIED)		APPROVE BY FRANK	DATE 01/JUL/13	PART NO. FWF39611-S07S22W1B	ITEM NO. FWF39611	<p>Leader Of Industry</p>
	X.±.012(0.30)	X.±5'	CHECKED BY CHERRY	DATE 01/JUL/13	TITLE WAFER PITCH: .156"(3.96mm)SERIES		
	X.XX±.008(0.20)	.X'±2'	DRAWN BY JACOB	DATE 01/JUL/13	REV 0	SHEET NO. 1/1	
	X.XX±.006(0.15)	.XX'±1'	THIS DRAWING CONTAINS INFORMATION THAT IS PROPRIETARY TO TXGA INDUSTRIAL ELECTRONICS(S.Z)CO.,LTD AND SHOULD NOT BE USED WITHOUT WRITTEN PERMISSION				
SCALE 5:1	SIZE A4	X.XXX±.004(0.10)	.XX'±0.5'				

1 2 3 4 5 6 7 8