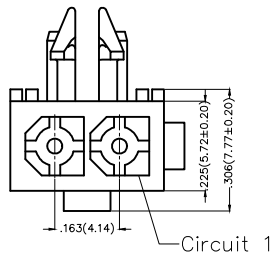
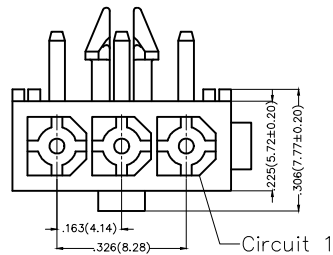


REV	LOCATIONS	DESCRIPTION	DATE	REVISER	APPD



2Circuits



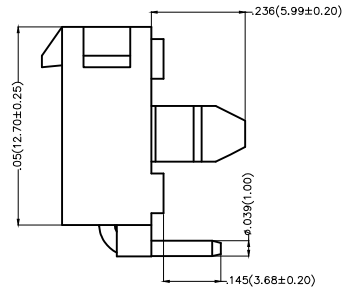
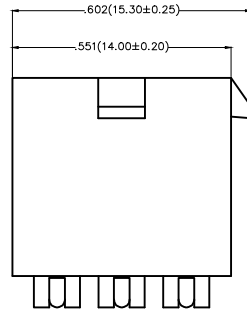
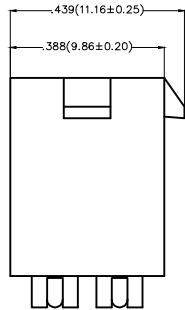
3Circuits

Electrical

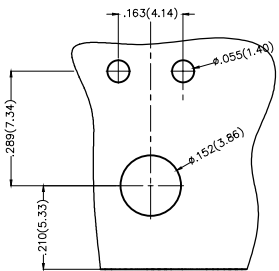
Current Rating: 9.0A AC(rms)/DC
 Voltage Rating: 600V AC(rms)/DC
 Contact Resistance: 20 mΩ Max
 Insulation Resistance: 1000 MΩ MIN
 Withstanding Voltage: 1500V AC r.m.s
 Temperature Range-Operating: -40°C ~ +105°C

Material and Plating

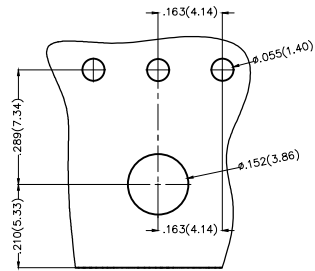
Housing: PA66(UL 94V-0) White
 Contact Pin: Brass
 Plating: Tin Plated



Circuits (n)	Part No.
2	FWF41401-S02S22W1B
3	FWF41401-S03S22W1B



2Circuits



3Circuits

Recommended P.C.Board Layout

<p>THIRD ANGLE PROJECTION</p>	GENERAL TOLERANCES (UNLESS SPECIFIED)		APPROVE BY FRANK	DATE 18/JUN/13	PART NO. FWF41401-SXXB22W1B	ITEM NO. FWF41401	<p>Leader Of Industry</p>
	X.±.012(0.30)	X.±5°	CHECKED BY CHERRY	DATE 27/JUN/13	TITLE Wire to Board (Wafer) Pitch 4.14mm 90° Angle (DIP)		
	X.XX±.008(0.20)	.X'±2'	DRAWN BY JACOB	DATE 27/JUN/13	REV 0	SHEET NO. 1/1	
	X.XX±.006(0.15)	.XX'±1'	THIS DRAWING CONTAINS INFORMATION THAT IS PROPRIETARY TO TXGA INDUSTRIAL ELECTRONICS(S.Z)CO.,LTD AND SHOULD NOT BE USED WITHOUT WRITTEN PERMISSION				
SCALE 5:1	SIZE A4	X.XXX±.004(0.10)	.XXX'±0.5'				