

REV	LOCATIONS	DESCRIPTION	DATE	REVISER	APPD
1	△	Flame Rating update	19/DEC/23	MATT	LEO
2	△	1:New drawing 2:Update dimensions and Pin material	14/MAY/25	MATT	LEO

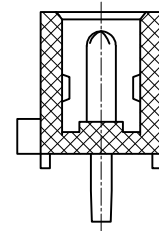
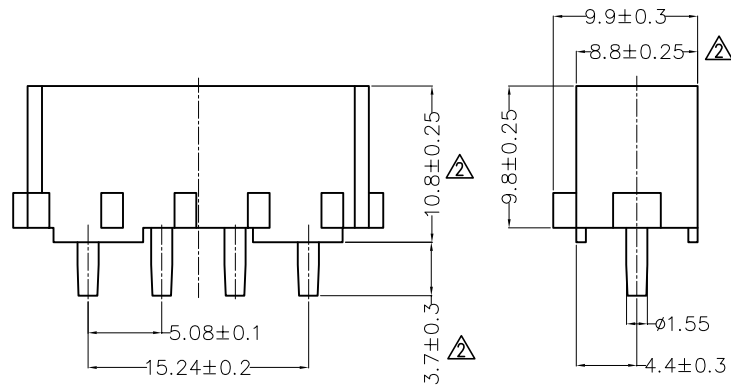
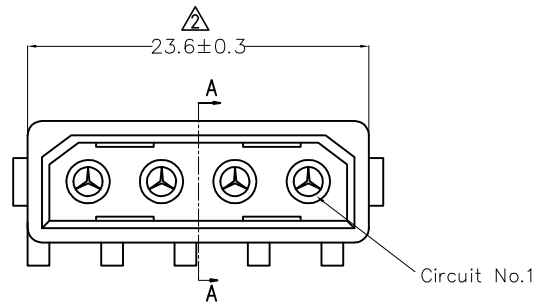
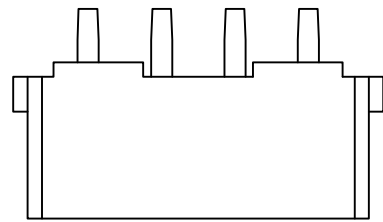
Electrical

Current Rating: 5A AC(rms)/DC
Voltage Rating: 250V AC(rms)/DC
Contact Resistance: 20 mΩ Max
Insulation Resistance: 1000 MΩ MIN
Withstanding Voltage: 1500V AC r.m.s
Temperature Range-Operating: -25°C~+85°C

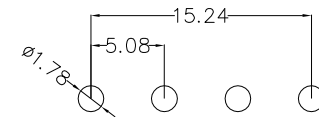
Material and Plating

Housing: PA66(UL 94V-2) Transparent △
Contact Pin: Brass △
Plating: Tin Plated

Mates With(Housing): FHG50801 Series



Section A-A



Recommended P.C.Board Layout
General Tolerances: ±0.05mm

 THIRD ANGLE PROJECTION	GENERAL TOLERANCES (UNLESS SPECIFIED)		APPROVE BY FRANK	DATE 28/JUN/13	PART NO. FWF50809-S04S22TB	ITEM NO. FWF50809	 Building Technology Cornerstone	
	DESIGN UNITS METRIC(mm)	X. ±0.30	X.* ±5°	CHECKED BY JACOB	DATE 28/JUN/13	TITLE Wire to Board (Wafer) Pitch 5.08mm 180° Vertical (DIP)		
SCALE 5:1	SIZE A4	X.XX ±0.15	X.XX' ±1°	DRAWN BY CHERRY	DATE 28/JUN/13	THIS DRAWING CONTAINS INFORMATION THAT IS PROPRIETARY TO TXGA INDUSTRIAL ELECTRONICS(S.Z)CO.,LTD AND SHOULD NOT BE USED WITHOUT WRITTEN PERMISSION	REV 2	SHEET NO. 1/1